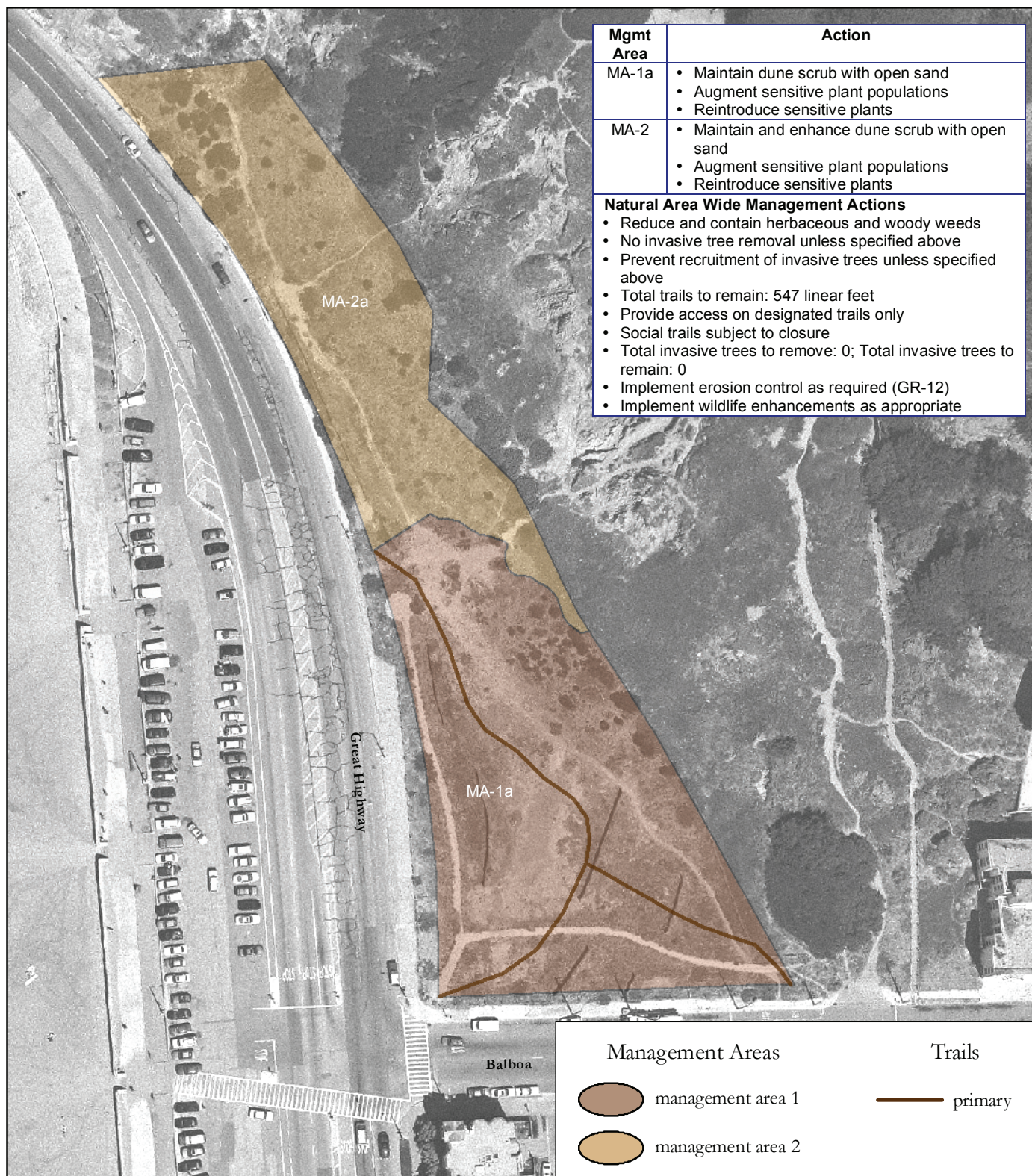


# APPENDIX B

## Maps of the Natural Areas



Source: Management areas and trails data collected by San Francisco Department of Recreation and Park Natural Areas Program (NAP), 2005; trails data digitized by San Francisco State University Institute for GISc (SFSUGIS), 2005; streets data excerpted from Environmental Systems Research Institute (ESRI), Inc.'s Street-Map 2000 data copyright ESRI 1998-2001; aerial photography San Francisco Department of Public Works, 2002, Orthophoto - San Francisco - 1 Foot Resolution - 2001; all data are in California State Plane Zone III projection, NAD 1983; map produced using ArcGIS 9.0 software by ESRI.

Map created May 28, 2005 by Debra Dwyer, San Francisco State University, Institute for Geographic Information Science; revised August 23, 2005.



0 25 50 100  
Feet

## FIGURE 6.22 - 5 MANAGEMENT AREAS AND TRAIL PLAN

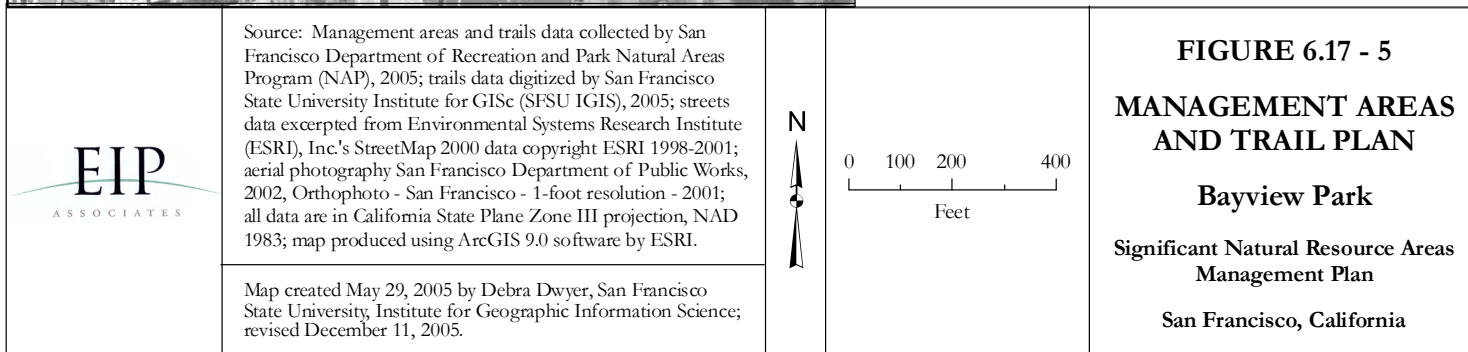
### Balboa Natural Area

Significant Natural Resource Areas  
Management Plan

San Francisco, California

EIP  
ASSOCIATES







Mgmt Area	Action	Action
MA-3b	<ul style="list-style-type: none"> <li>Maintain and enhance scrub-grassland-urban forest mosaic</li> </ul>	<ul style="list-style-type: none"> <li>Maintain and enhance scrub-grassland-urban forest mosaic</li> </ul>
<b>Natural Area Wide Management Actions</b> <ul style="list-style-type: none"> <li>Reduce and contain herbaceous and woody weeds</li> <li>No invasive tree removal unless specified above</li> <li>Prevent recruitment of invasive trees unless specified above</li> <li>Total trails to remain (including possible new trails): 8,159 linear-feet</li> <li>Provide access on designated trails only</li> <li>Social trails subject to closure</li> <li>Total invasive trees to remove: 0; Total invasive trees to remain: 100</li> <li>Implement erosion control as required (GR-12)</li> <li>Implement wildlife enhancements as appropriate</li> <li>No change to existing Dog Play Area unless specified above</li> </ul>		
MA-1a	<ul style="list-style-type: none"> <li>Maintain diverse native grassland</li> <li>Augment sensitive plant populations</li> <li>Reintroduce sensitive plants</li> <li>Reroute lowest trail</li> <li>Create designated trails and access points.</li> <li>Install low fencing if necessary</li> <li>Partially modify existing Dog Play Areas to on-leash</li> </ul>	<ul style="list-style-type: none"> <li>Maintain diverse native grassland</li> <li>Augment sensitive plant populations</li> <li>Reintroduce sensitive plants</li> </ul>
MA-1b	<ul style="list-style-type: none"> <li>Maintain diverse native grassland</li> <li>Augment sensitive plant populations</li> <li>Reintroduce sensitive plants</li> </ul>	<ul style="list-style-type: none"> <li>Maintain diverse native grassland</li> </ul>
MA-1c	<ul style="list-style-type: none"> <li>Maintain diverse native grassland</li> </ul>	
MA-2a	<ul style="list-style-type: none"> <li>Maintain and enhance grassland</li> <li>Reintroduce sensitive plants</li> </ul>	
MA-3a	<ul style="list-style-type: none"> <li>Maintain and enhance native grassland</li> <li>Allow important nectar/larval/seed invasive plants to persist for wildlife</li> </ul>	

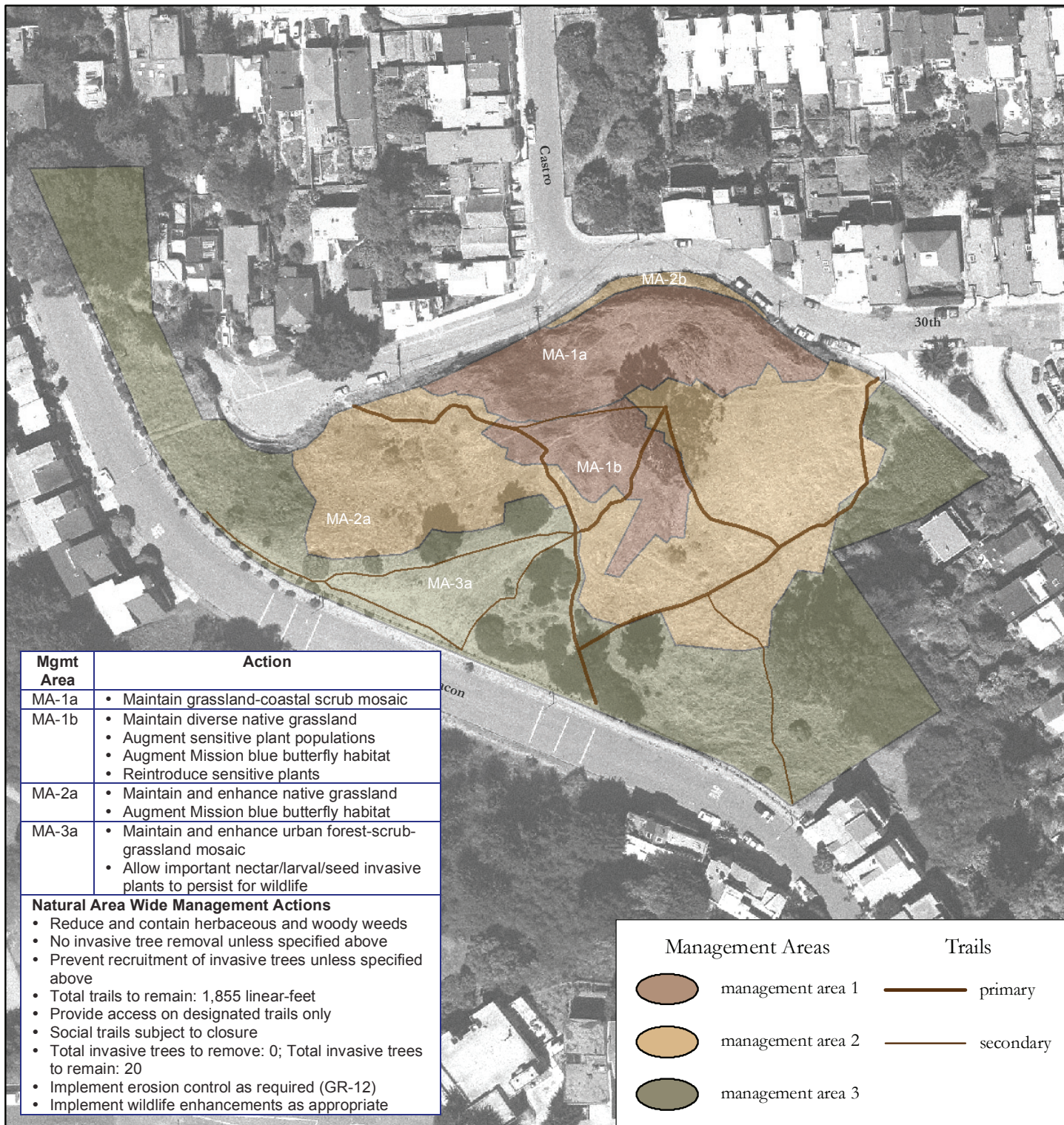


Source: Management areas and trails data collected by San Francisco Department of Recreation and Park Natural Areas Program (NAP), 2005; trails data digitized by San Francisco State University, Institute for GISc (SFISU IGIS), 2005; streets data excerpted from Environmental Systems Research Institute (ESRI), Inc.'s StreetMap 2000 data copyright ESRI 1998-2001; aerial photography San Francisco Department of Public Works, 2002, Orthophoto - San Francisco - 1 Foot Resolution - 2001; all data are in California State Plane Zone III projection, NAD 1983; map produced using ArcGIS 9.0 software by ESRI.

Map created May 28, 2005 by Debra Dwyer, San Francisco State University, Institute for Geographic Information Science. Revised August 23, 2005.

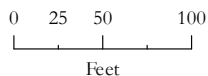
**FIGURE 6.21 - 5**  
**MANAGEMENT AREAS AND TRAIL PLAN**  
**Bernal Hill**  
Significant Natural Resource Areas Management Plan  
San Francisco





Source: Management areas and trails data collected by San Francisco Department of Recreation and Park Natural Areas Program (NAP), 2005; trails data digitized by San Francisco State University Institute for GISc (SFSUGIS), 2005; streets data excerpted from Environmental Systems Research Institute (ESRI), Inc.'s Street-Map 2000 data copyright ESRI 1998-2001; aerial photography San Francisco Department of Public Works, 2002, Orthophoto - San Francisco - 1 Foot Resolution - 2001; all data are in California State Plane Zone III projection, NAD 1983; map produced using ArcGIS 9.0 software by ESRI.

Map created May 28, 2005 by Debra Dwyer, San Francisco State University, Institute for Geographic Information Science; revised August 23, 2005.



## FIGURE 6.9 - 4 MANAGEMENT AREAS AND TRAIL PLAN

### Billy Goat

Significant Natural Resource Areas  
Management Plan

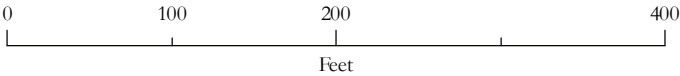
San Francisco, California





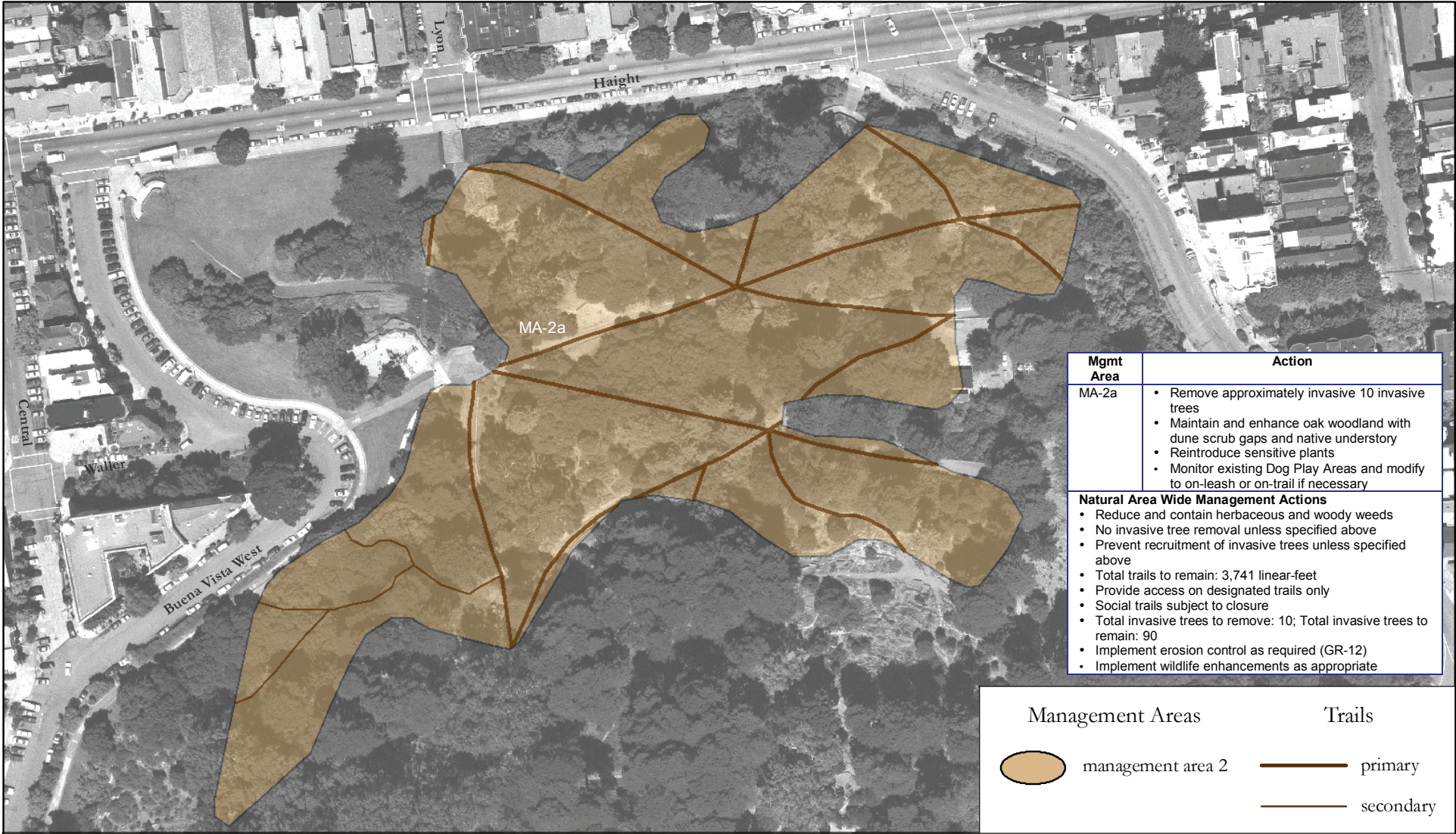
Source: Management areas and trails data collected by San Francisco Department of Recreation and Park Natural Areas Program (NAP), 2005; trails data digitized by San Francisco State University, Institute for GISc (SFSU IGIS), 2005; streets data excerpted from Environmental Systems Research Institute (ESRI), Inc.'s StreetMap 2000 data copyright ESRI 1998-2001; aerial photography San Francisco Department of Public Works, 2002, Orthophoto - San Francisco - 1 Foot Resolution - 2001: City of San Francisco Department of Public Works, San Francisco; all data are in California State Plane Zone III projection, NAD 1983; map produced using ArcGIS 9.0 software by ESRI.

Map created May 30, 2005 by Debra Dwyer, San Francisco State University, Institute for Geographic Information Science; revised August 23, 2005.



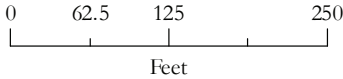
**FIGURE 6.6 - 5**  
**MANAGEMENT AREAS**  
**AND TRAIL PLAN**  
**Brooks Park and**  
**Lakeview/Ashton Mini Park**  
**Significant Natural Resource Areas**  
**Management Plan**  
**San Francisco, California**





Source: Management areas and trails data collected by San Francisco Department of Recreation and Park Natural Areas Program (NAP), 2005; trails data digitized by San Francisco State University Institute for GISc (SFSUGIS), 2005; streets data excerpted from Environmental Systems Research Institute (ESRI), Inc.'s StreetMap 2000 data copyright ESRI 1998-2001; aerial photography San Francisco Department of Public Works, 2002, Orthophoto - San Francisco - 1 Foot Resolution - 2001; all data are in California State Plane Zone III projection, NAD 1983; map produced using ArcGIS 9.0 software by ESRI.

Map created May 28, 2005 by Debra Dwyer, San Francisco State University, Institute for Geographic Information Science; revised August 23, 2005.



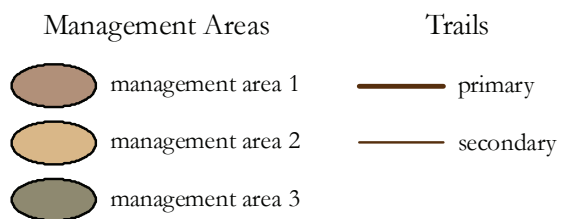
**FIGURE 6.10 - 5**  
**MANAGEMENT AREAS**  
**AND TRAIL PLAN**  
**Buena Vista Park**  
**Significant Natural Resource Areas**  
**Management Plan**  
**San Francisco, California**





Mgmt Area	Action
MA-1a	<ul style="list-style-type: none"> <li>Remove 1 invasive tree</li> <li>Maintain diverse native grassland</li> <li>Augment sensitive plant populations</li> </ul>
MA-1b	<ul style="list-style-type: none"> <li>Maintain diverse native grassland</li> <li>Augment sensitive plant populations</li> <li>Reintroduce sensitive species</li> <li>Discourage use of steep western slopes by dogs and people. Install fences if necessary</li> </ul>
MA-1c	<ul style="list-style-type: none"> <li>Maintain diverse native grassland</li> <li>Augment sensitive plant populations</li> <li>Reintroduce sensitive species</li> <li>Discourage use of steep western slopes by dogs and people. Install fences if necessary</li> </ul>
MA-2a	<ul style="list-style-type: none"> <li>Maintain and enhance coastal scrub-grassland mosaic</li> </ul>
MA-2b	<ul style="list-style-type: none"> <li>Maintain and enhance coastal scrub-grassland mosaic, with oaks at margin for wildlife</li> <li>Discourage use of steep western slopes by dogs and people. Install fences if necessary</li> </ul>
MA-2c	<ul style="list-style-type: none"> <li>Remove 4 invasive trees</li> <li>Maintain and enhance oak woodland</li> </ul>
MA-2d	<ul style="list-style-type: none"> <li>Remove approximately 10 invasive trees</li> <li>Maintain and enhance grassland-coastal scrub-oak woodland mosaic</li> <li>Reintroduce sensitive plants</li> </ul>

Mgmt Area	Action
MA-3a	<ul style="list-style-type: none"> <li>Maintain and enhance coastal scrub</li> </ul>
MA-3b	<ul style="list-style-type: none"> <li>Maintain and enhance urban forest</li> </ul>
MA-3c	<ul style="list-style-type: none"> <li>Maintain and enhance urban forest-grassland mosaic</li> <li>Allow important nectar/larval/seed invasive plants to persist for wildlife</li> </ul>
MA-3d	<ul style="list-style-type: none"> <li>Maintain and enhance coastal scrub-grassland-urban forest mosaic</li> <li>Allow important nectar/larval/seed invasive plants to persist for wildlife</li> <li>Plant shrubs and trees to connect wildlife habitat</li> </ul>
<b>Natural Area Wide Management Actions</b> <ul style="list-style-type: none"> <li>Reduce and contain herbaceous and woody weeds</li> <li>No invasive tree removal unless specified above</li> <li>Prevent recruitment of invasive trees unless specified above</li> <li>Total trails to remain: 4,856 linear-feet</li> <li>Provide access on designated trails only</li> <li>Social trails subject to closure</li> <li>Total invasive trees to remove: 15; Total invasive trees to remain: 185</li> <li>Implement erosion control as required (GR-12)</li> <li>Implement wildlife enhancements as appropriate</li> <li>No change to existing Dog Play Area</li> </ul>	



Source: Management areas and trails data collected by San Francisco Department of Recreation and Park Natural Areas Program (NAP), 2005; trails data digitized by San Francisco State University Institute for GISc (SFSU IGIS), 2005; streets data excerpted from Environmental Systems Research Institute (ESRI), Inc.'s StreetMap 2000 data copyright ESRI 1998-2001; aerial photography San Francisco Department of Public Works, 2002, Orthophoto - San Francisco - 1-foot resolution - 2001; all data are in California State Plane Zone III projection, NAD1983; map produced using ArcGIS 9.0 software by ESRI.

Map created May 29, 2005 by Debra Dwyer, San Francisco State University, Institute for Geographic Information Science; revised August 23, 2005.

N

0 37.5 75 150

Feet

**FIGURE 6.11 - 5**

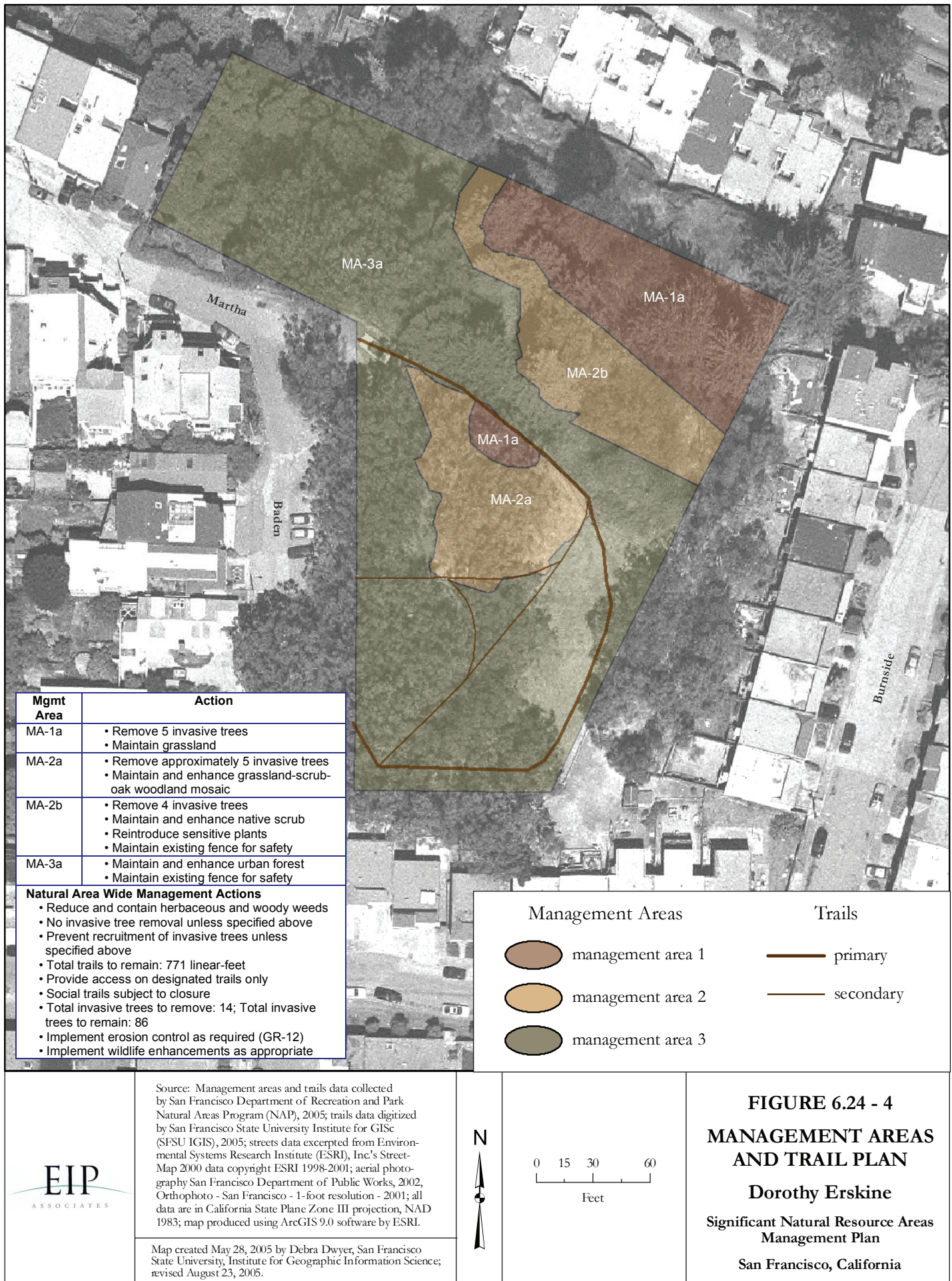
**MANAGEMENT AREAS AND TRAIL PLAN**

**Corona Heights**

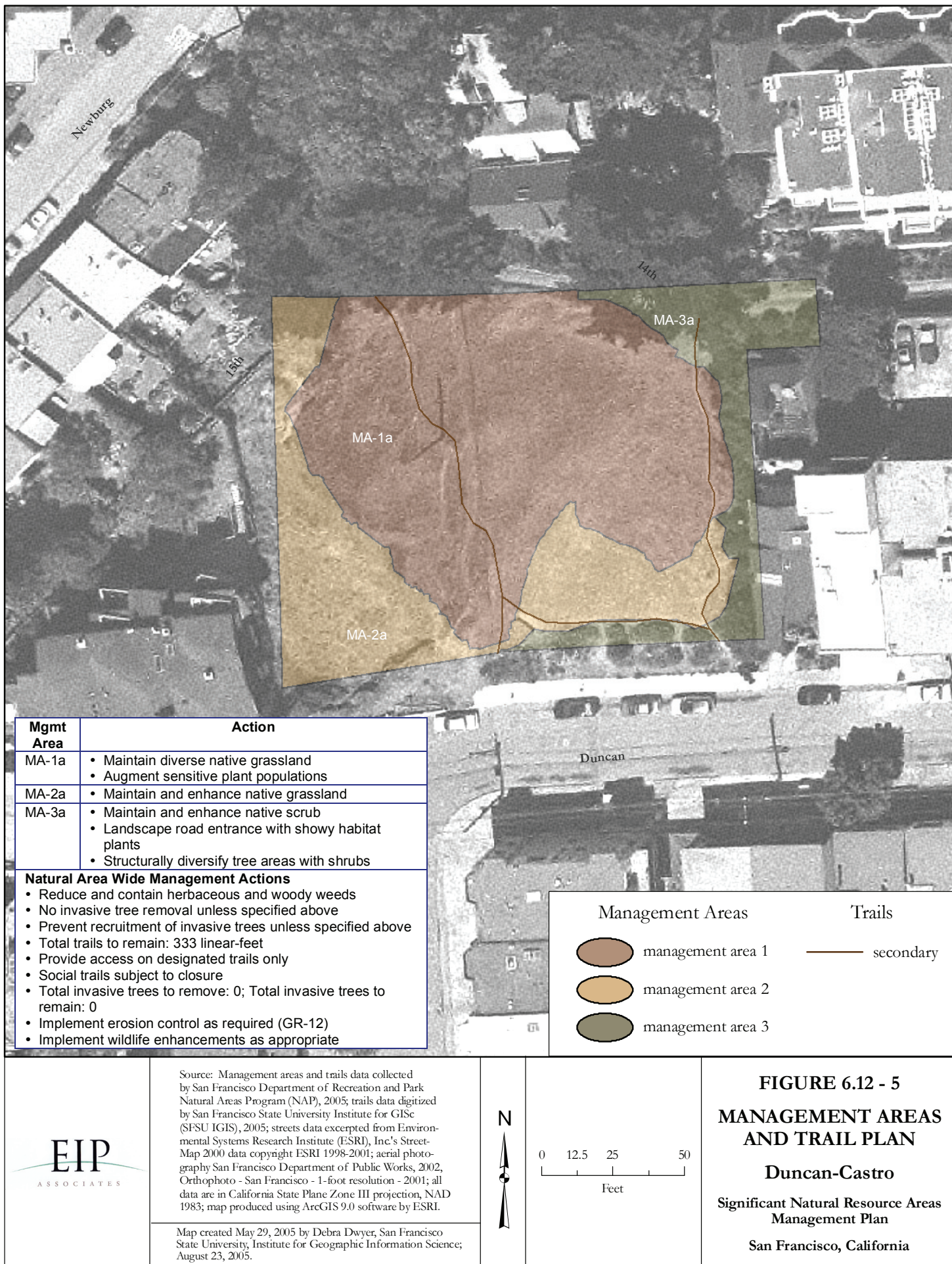
**Significant Natural Resource Areas Management Plan**

**San Francisco, California**

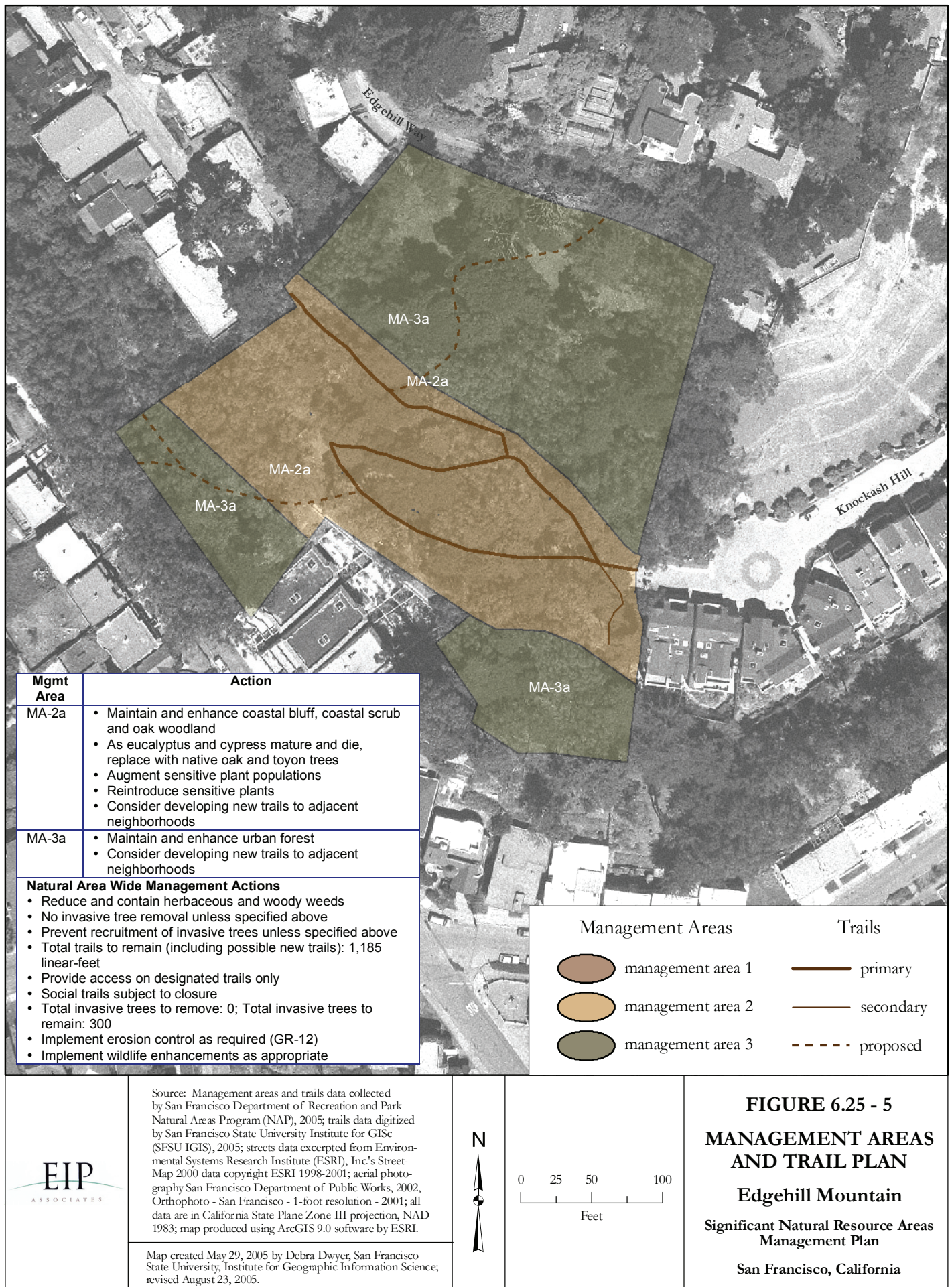




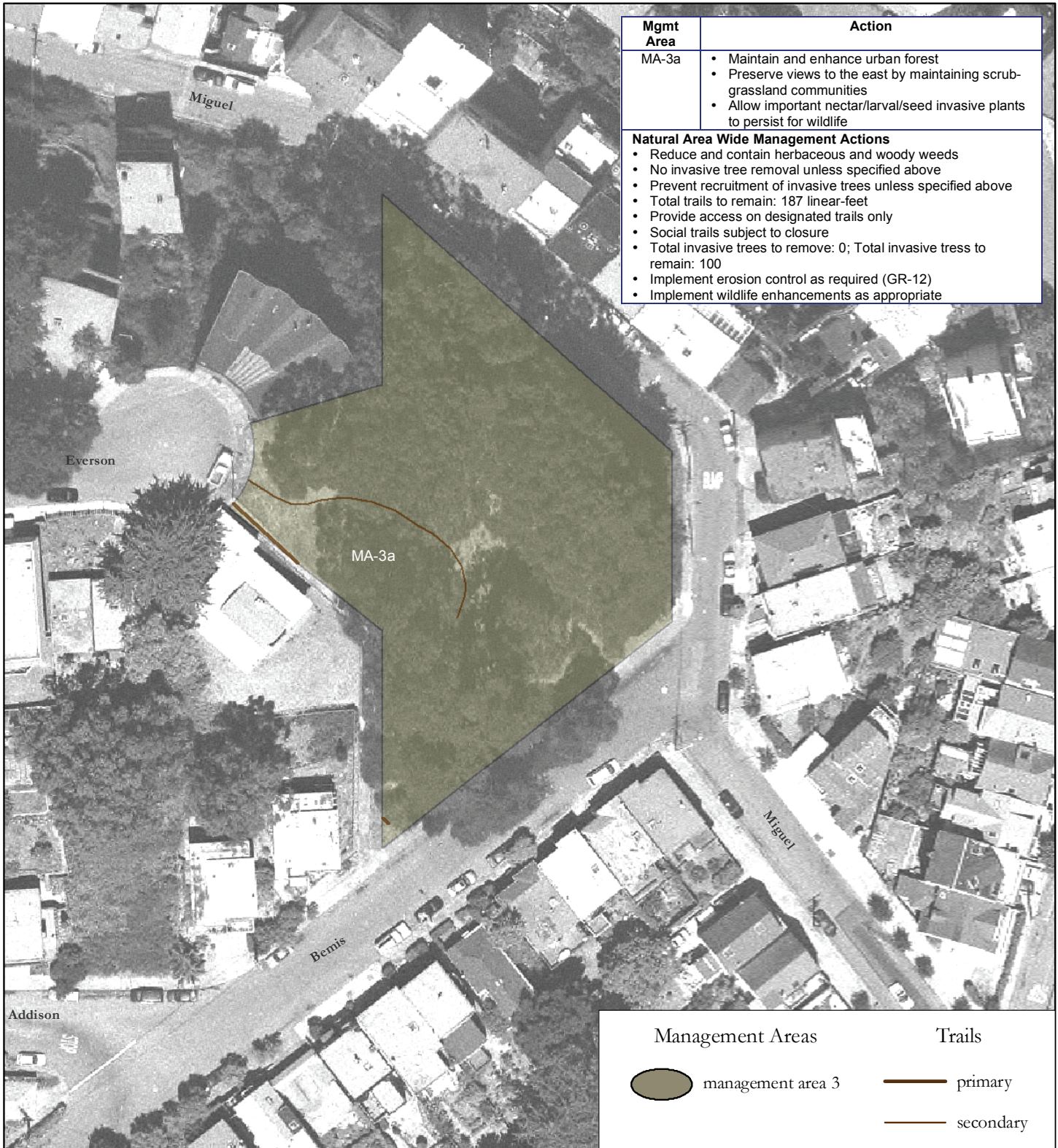






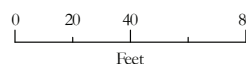






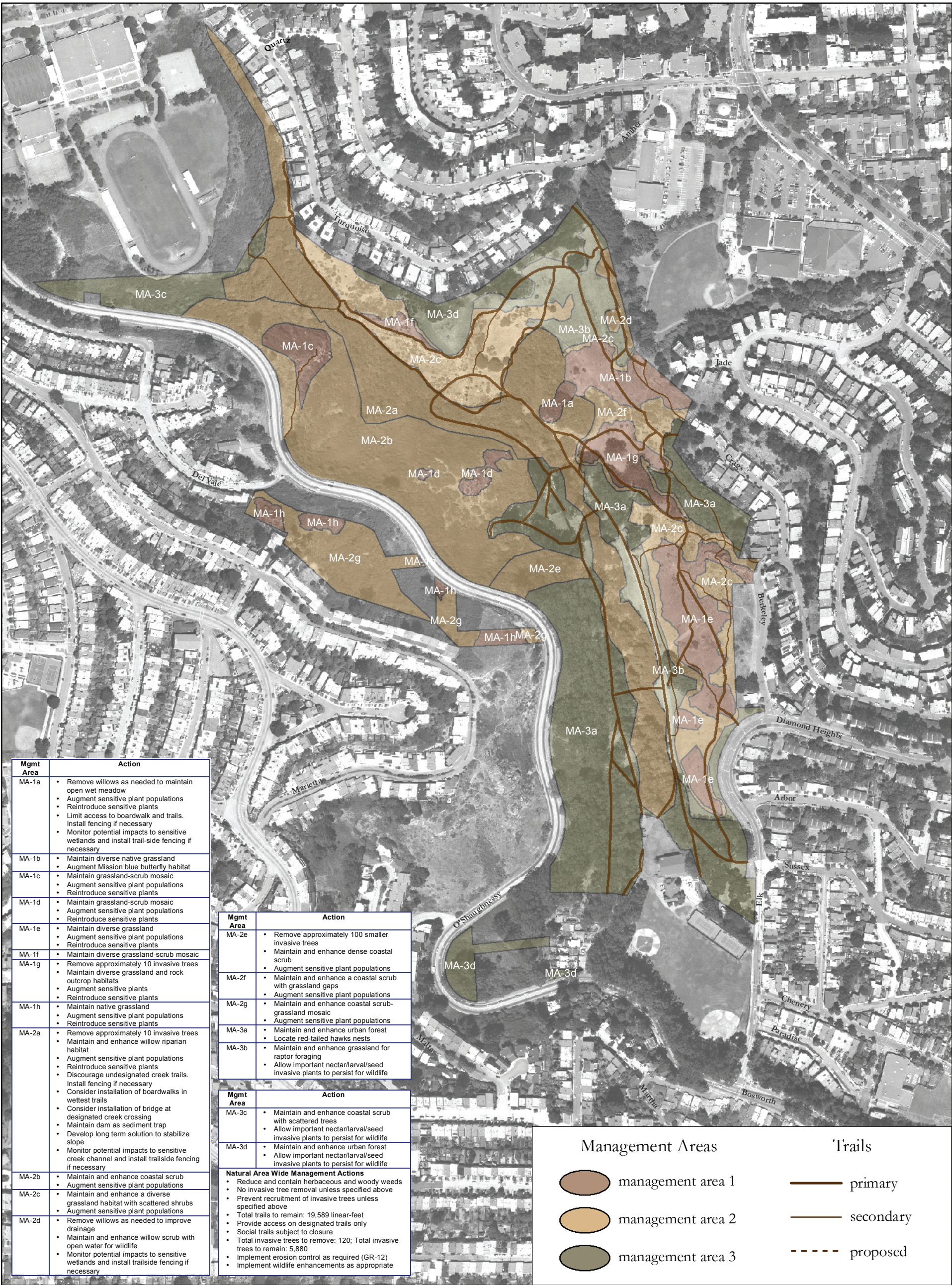
Source: Management areas and trails data collected by San Francisco Department of Recreation and Park Natural Areas Program (NAP), 2005; trails data digitized by San Francisco State University Institute for GISc (SFSU IGIS), 2005; streets data excerpted from Environmental Systems Research Institute (ESRI), Inc.'s StreetMap 2000 data copyright ESRI 1998-2001; aerial photography San Francisco Department of Public Works, 2002, Orthophoto - San Francisco - 1-foot resolution - 2001; all data are in California State Plane Zone III projection, NAD 1983; map produced using ArcGIS 9.0 software by ESRI.

Map created May 29, 2005 by Debra Dwyer, San Francisco State University, Institute for Geographic Information Science; revised August 23, 2005.



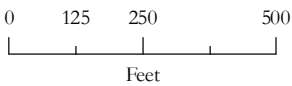
**FIGURE 6.26 - 4**  
**MANAGEMENT AREAS**  
**AND TRAIL PLAN**  
**Fairmount Park**  
**Significant Natural Resource Areas**  
**Management Plan**  
**San Francisco, California**





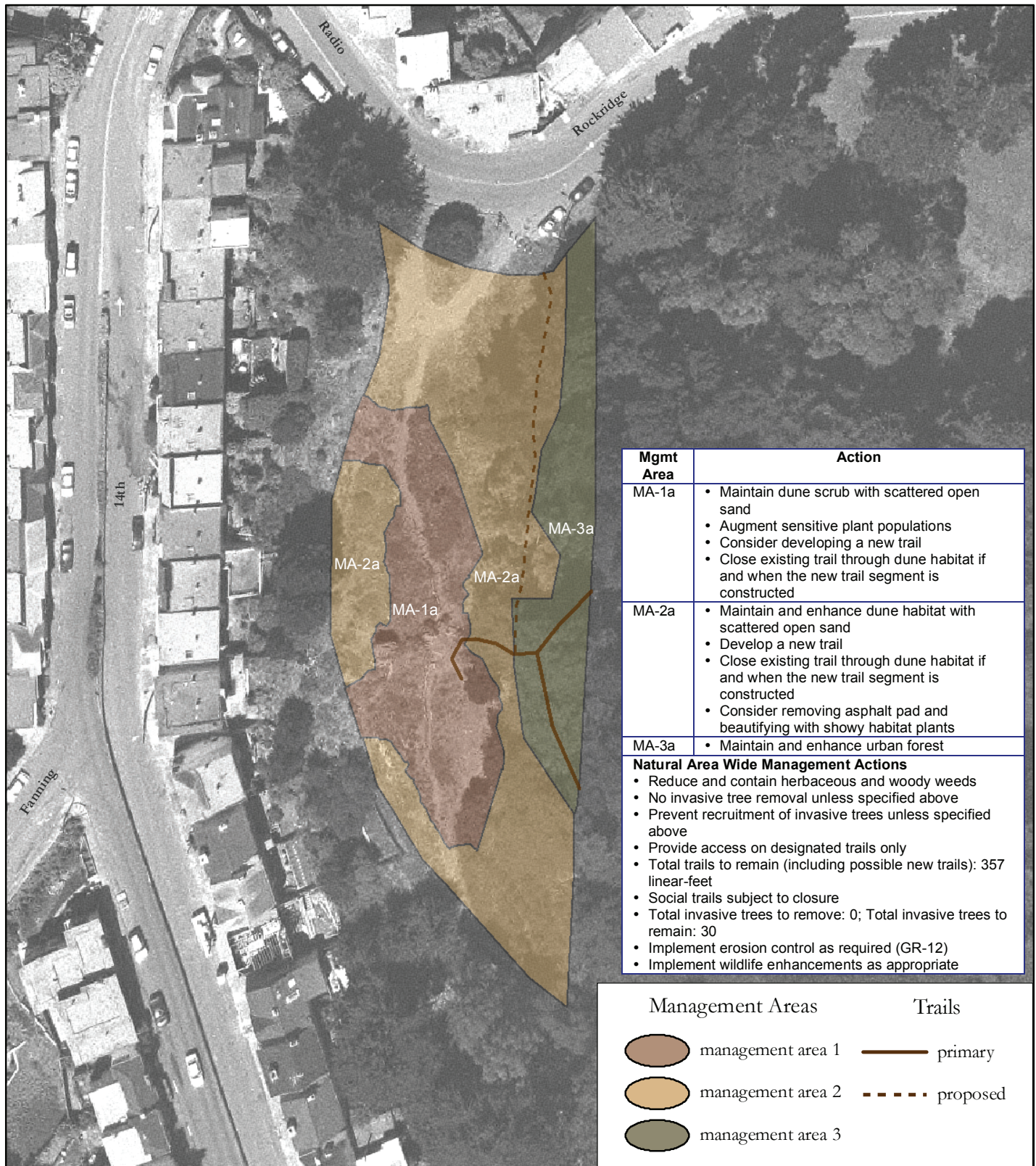
Source: Management areas and trails data collected by San Francisco Department of Recreation and Park Natural Areas Program (NAP), 2005; trails data digitized by San Francisco State University Institute for GISc (SFSU IGIS), 2005; streets data excerpted from Environmental Systems Research Institute (ESRI), Inc.'s Street-Map 2000 data copyright ESRI 1998-2001; aerial photography San Francisco Department of Public Works, 2002, Orthophoto - San Francisco - 1-foot resolution - 2001; all data are in California State Plane Zone III projection, NAD 1983; map produced using ArcGIS 9.0 software by ESRI.

Map created May 28, 2005 by Debra Dwyer, San Francisco State University, Institute for Geographic Information Science; revised August 23, 2005.



**FIGURE 6.3 - 5**  
**MANAGEMENT AREAS**  
**AND TRAIL PLAN**  
**Glen Canyon and**  
**O'Shaughnessy Hollow**  
**Significant Natural Resource Areas**  
**Management Plan**  
**San Francisco, California**





Source: Management areas and trails data collected by San Francisco Department of Recreation and Park Natural Areas Program (NAP), 2005; trails data digitized by San Francisco State University Institute for GISc (SFSUGIS), 2005; streets data excerpted from Environmental Systems Research Institute (ESRI), Inc.'s Street-Map 2000 data copyright ESRI 1998-2001; aerial photography San Francisco Department of Public Works, 2002, Orthophoto - San Francisco - 1-foot resolution - 2001; all data are in California State Plane Zone III projection, NAD 1983; map produced using ArcGIS 9.0 software by ESRI.

Map created May 29, 2005 by Debra Dwyer, San Francisco State University, Institute for Geographic Information Science; revised August 23, 2005.

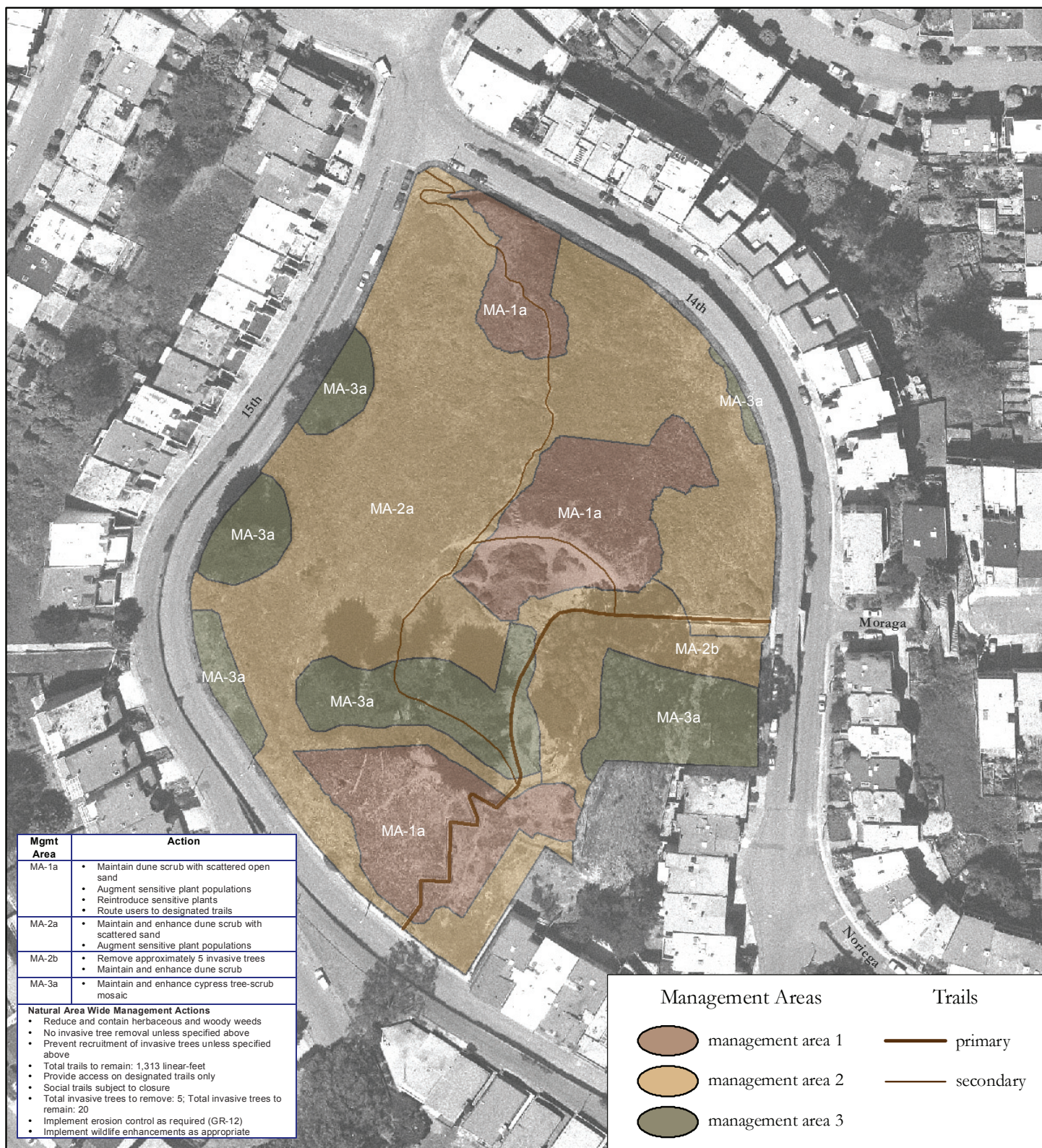


0 15 30 60  
Feet

## FIGURE 6.5 - 19 MANAGEMENT AREAS AND TRAIL PLAN

**Golden Gate Heights**  
Significant Natural Resource Areas  
Management Plan  
San Francisco, California





Source: Management areas and trails data collected by San Francisco Department of Recreation and Park Natural Areas Program (NAP), 2005; trails data digitized by San Francisco State University Institute for GISc (SFSU IGIS), 2005; streets data excerpted from Environmental Systems Research Institute (ESRI), Inc.'s StreetMap 2000 data copyright ESRI 1998-2001; aerial photography San Francisco Department of Public Works, 2002, Orthophoto - San Francisco - 1-foot resolution - 2001; all data are in California State Plane Zone III projection, NAD 1983; map produced using ArcGIS 9.0 software by ESRI.

Map created May 29, 2005 by Debra Dwyer, San Francisco State University, Institute for Geographic Information Science; revised August 23, 2005.



0 25 50 100  
Feet

## FIGURE 6.5 - 17 MANAGEMENT AREAS AND TRAIL PLAN

### Grandview

Significant Natural Resource Areas  
Management Plan

San Francisco, California





**FIGURE 6.5 - 20**  
**MANAGEMENT AREAS**  
**AND TRAIL PLAN**  
**Hawk Hill**  
 Significant Natural Resource Areas  
 Management Plan  
 San Francisco, California

Source: Management areas and trails data collected by San Francisco Department of Recreation and Park Natural Areas Program (NAP), 2005; trails data digitized by San Francisco State University Institute for GISc (SFSU IGIS), 2005; streets data excerpted from Environmental Systems Research Institute (ESRI), Inc.'s StreetMap 2000 data copyright ESRI 1998-2001; aerial photography San Francisco Department of Public Works, 2002, Orthophoto - San Francisco - 1 Foot Resolution - 2001; all data are in California State Plane Zone III projection, NAD 1983; map produced using ArcGIS 9.0 software by ESRI.

Map created May 28, 2005 by Debra Dwyer, San Francisco State University, Institute for Geographic Information Science; revised August 23, 2005.

Mgmt Area	Action
MA-1a	<ul style="list-style-type: none"> <li>Maintain dune scrub with scattered open sand</li> <li>Augment sensitive plant populations</li> <li>Reintroduce sensitive plants</li> <li>Consider installing a sand ladder on secondary trails</li> <li>Limit access to designated trails, fence if necessary</li> </ul>
MA-2a	<ul style="list-style-type: none"> <li>Maintain and enhance dune scrub with scattered open sand</li> <li>Augment sensitive plant populations</li> <li>Limit access to designated trails, fence if necessary</li> </ul>
<b>Natural Area Wide Management Actions</b> <ul style="list-style-type: none"> <li>Reduce and contain herbaceous and woody weeds</li> <li>No invasive tree removal unless specified above</li> <li>Prevent recruitment of invasive trees unless specified above</li> <li>Provide access on designated trails</li> <li>Total trails to remain: 917 linear-feet</li> <li>Social trails subject to closure</li> <li>Total invasive trees to remove: 0; Total invasive trees to remain: 10</li> <li>Implement erosion control as required (GR-12)</li> <li>Implement wildlife enhancements as appropriate</li> </ul>	