

Source: Management areas and trails data collected by San Francisco Department of Recreation and Park Natural Areas Program (NAP), 2005; trails data digitized by San Francisco State University Institute for GISc (SFSU IGIS), 2005; streets data excerpted from Environmental Systems Research Institute (ESRI), Inc.'s Street-Map 2000 data copyright ESRI 1998-2001; aerial photography San Francisco Department of Public Works, 2002, Orthophoto - San Francisco - 1-foot resolution - 2001; all data are in California State Plane Zone III projection, NAD 1983; map produced using ArcGIS 9.0 software by ESRI.

Map created May 29, 2005 by Debra Dwyer, San Francisco State University, Institute for Geographic Information Science; revised August 23, 2005.

N

0 25 50 100

Feet

FIGURE 6.5 - 18

MANAGEMENT AREAS

AND TRAIL PLAN

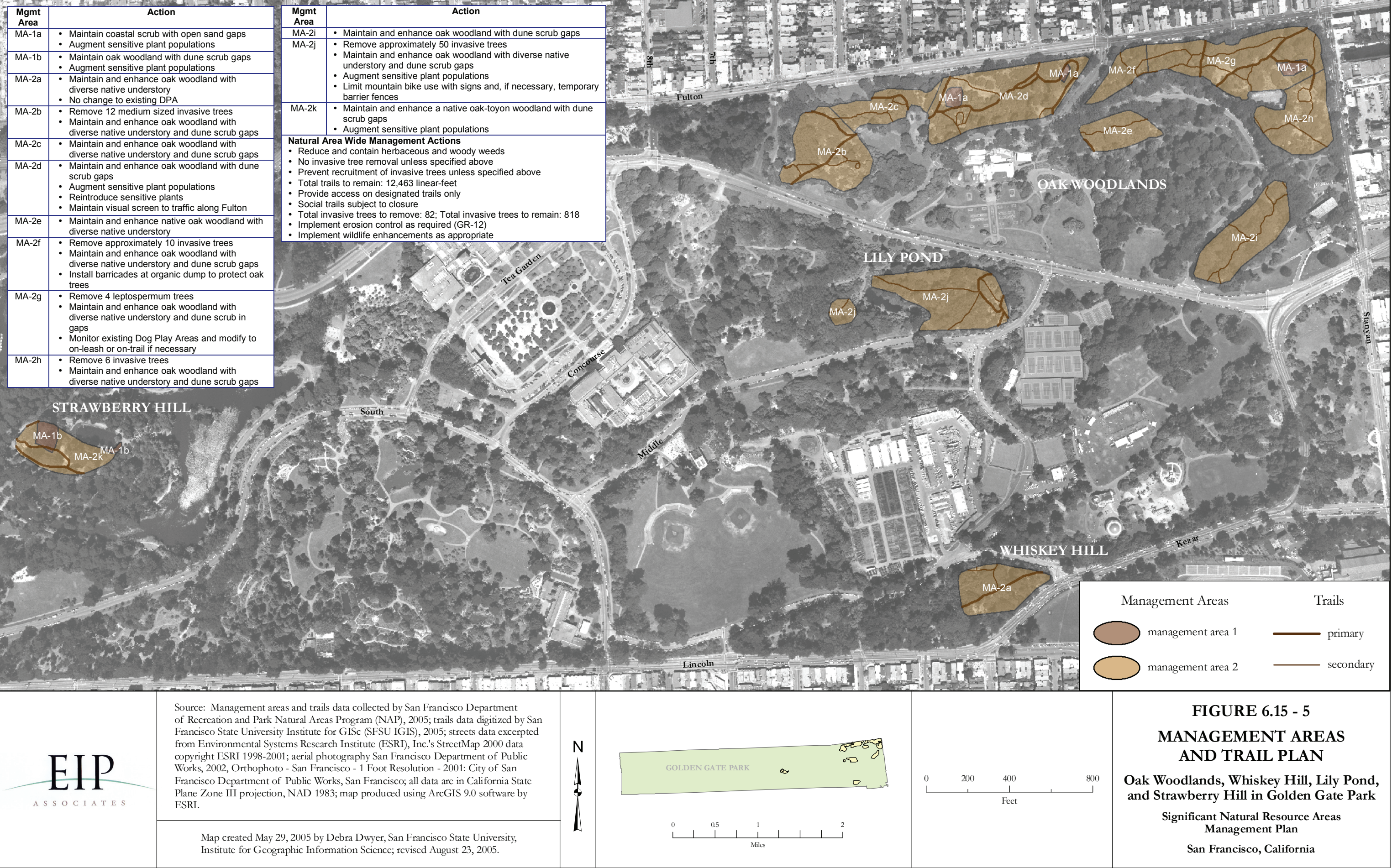
Rock Outcrop

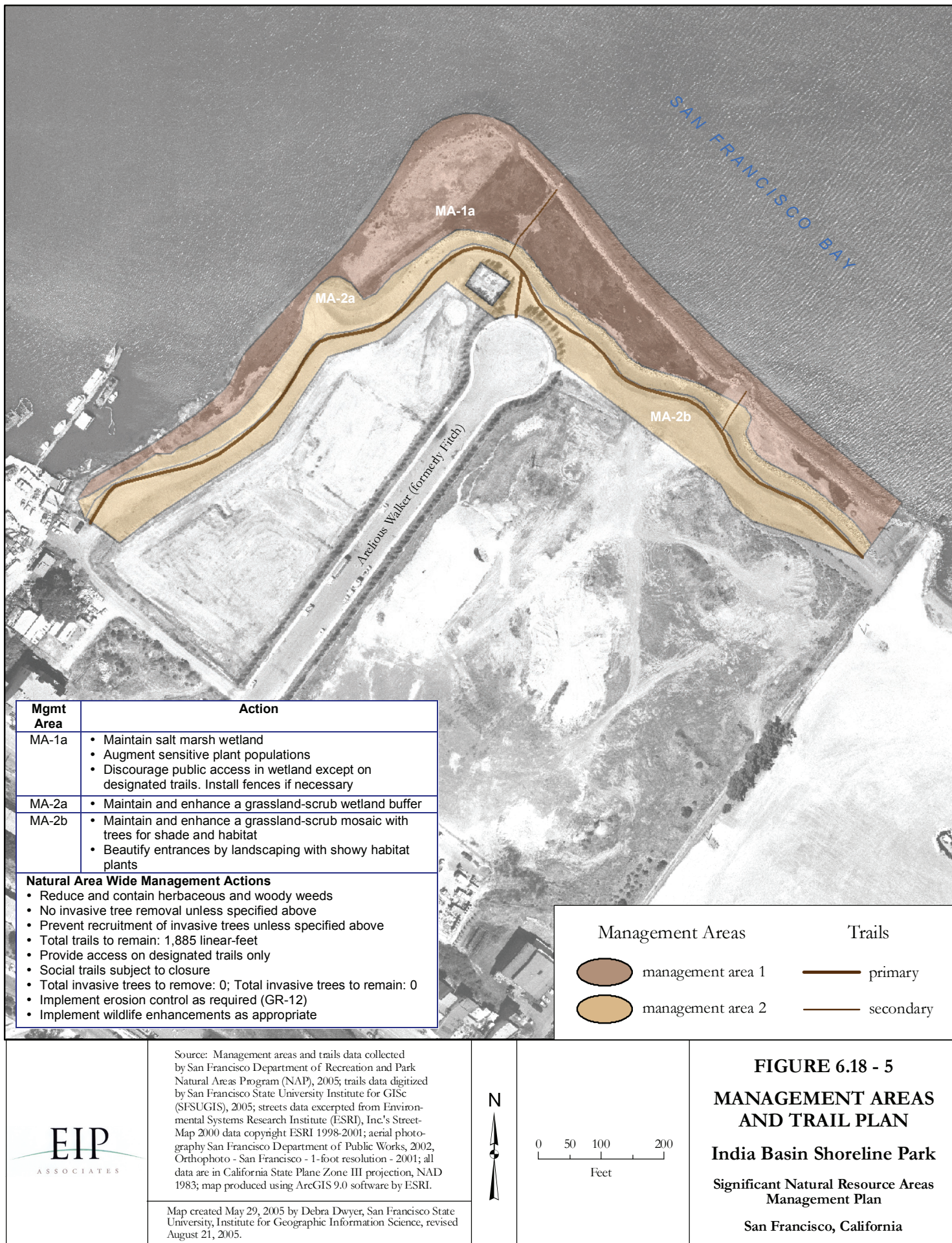
Significant Natural Resource Areas

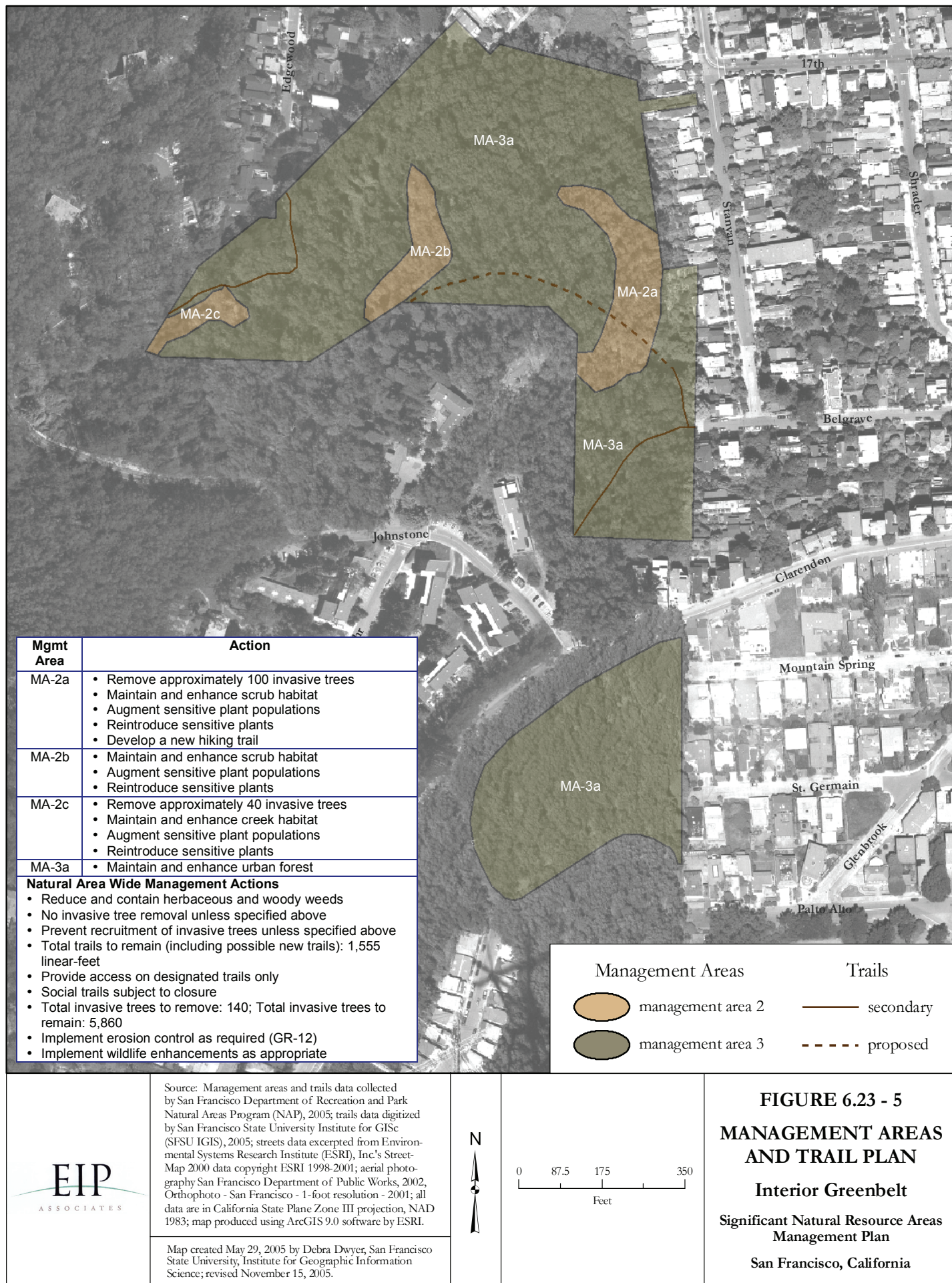
Management Plan

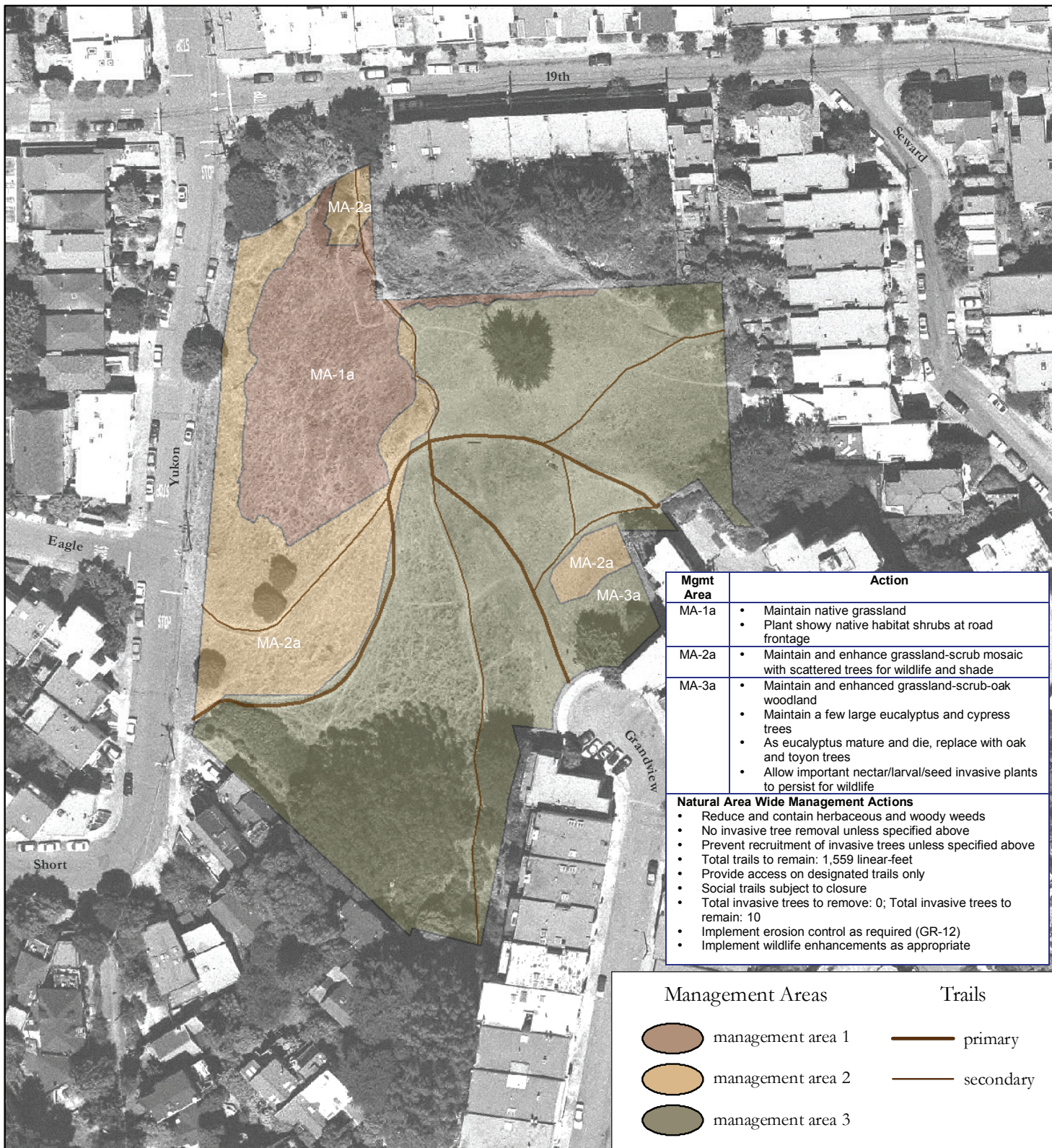
San Francisco, California

FINAL DRAFT









Source: Management areas and trails data collected by San Francisco Department of Recreation and Park Natural Areas Program (NAP), 2005; trails data digitized by San Francisco State University Institute for GISc (SFSU IGIS), 2005; streets data excerpted from Environmental Systems Research Institute (ESRI), Inc.'s Street-Map 2000 data copyright ESRI 1998-2001; aerial photography San Francisco Department of Public Works, 2002, Orthophoto - San Francisco - 1-foot resolution - 2001; all data are in California State Plane Zone III projection, NAD 1983; map produced using ArcGIS 9.0 software by ESRI.

Map created May 29, 2005 by Debra Dwyer, San Francisco State University, Institute for Geographic Information Science; revised August 23, 2005.

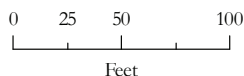


FIGURE 6.13 - 4 MANAGEMENT AREAS AND TRAIL PLAN

Kite Hill
Significant Natural Resource Areas
Management Plan
San Francisco, California



Source: Management areas and trails data collected by San Francisco Department of Recreation and Park Natural Areas Program (NAP), 2005; trails data digitized by San Francisco State University Institute for GISc (SFSU IGIS), 2005; streets data excerpted from Environmental Systems Research Institute (ESRI), Inc.'s StreetMap 2000 data copyright ESRI 1998-2001; aerial photography San Francisco Department of Public Works, 2002, Orthophoto - San Francisco - 1-foot resolution - 2001; all data are in California State Plane Zone III projection, NAD 1983; map produced using ArcGIS 9.0 software by ESRI.

Map created May 30, 2005 by Debra Dwyer, San Francisco State University, Institute for Geographic Information Science; revised October 13, 2005.

FIGURE 6.1 - 9

MANAGEMENT AREAS AND TRAIL PLAN

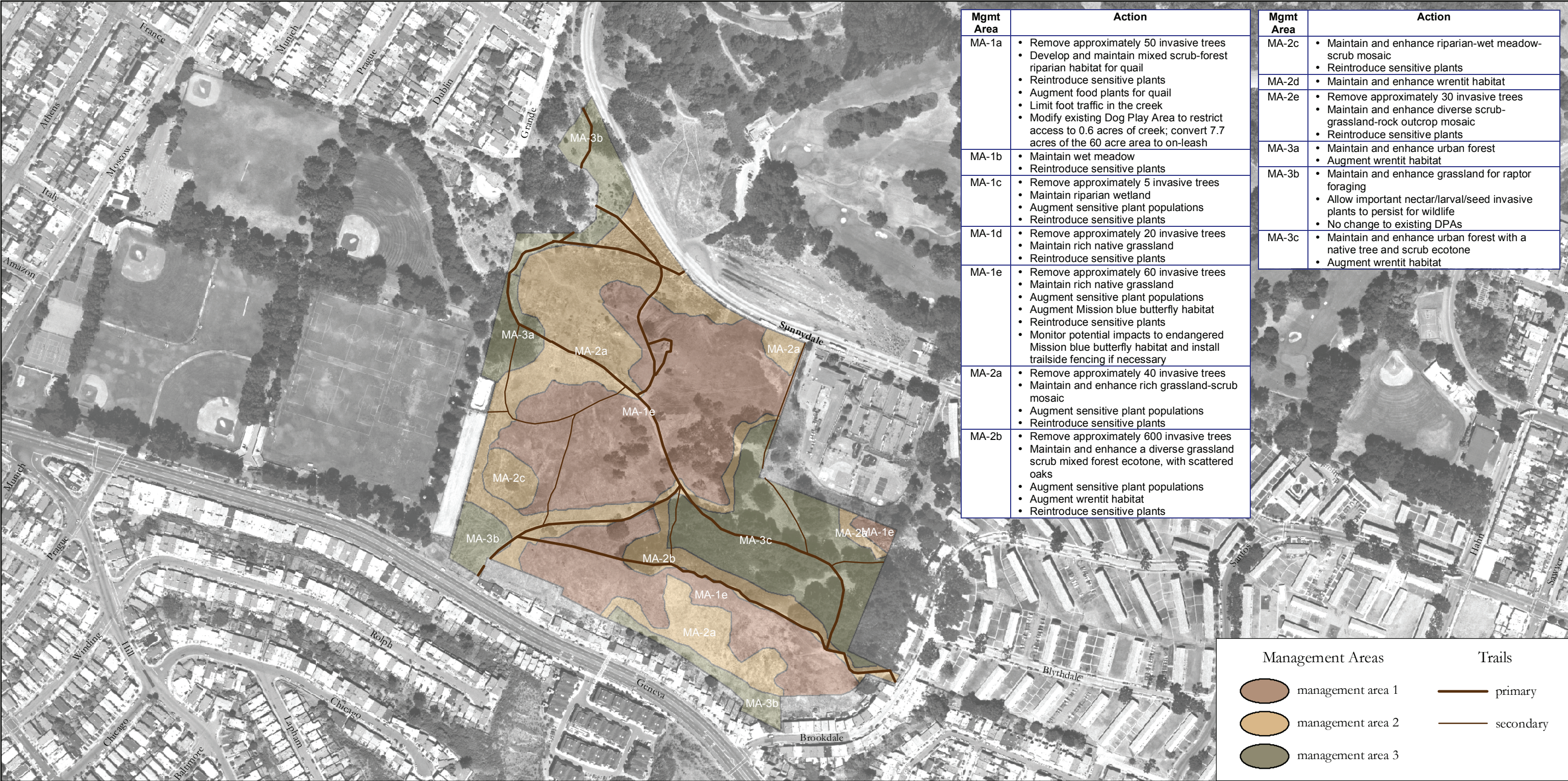
Lake Merced

Significant Natural Resource Areas Management Plan

San Francisco, California

0 250 500 1,000 Feet

N



Source: Management areas and trails data collected by San Francisco Department of Recreation and Park Natural Areas Program (NAP), 2005; trails data digitized by San Francisco State University Institute for GISc (SFSU IGIS), 2005; streets data excerpted from Environmental Systems Research Institute (ESRI), Inc.'s StreetMap 2000 data copyright ESRI 1998-2001; aerial photography San Francisco Department of Public Works, 2002, Orthophoto - San Francisco - 1 Foot Resolution - 2001: City of San Francisco Department of Public Works, San Francisco; all data are in California State Plane Zone III projection, NAD 1983; map produced using ArcGIS 9.0 software by ESRI.

Map created May 29, 2005 by Debra Dwyer, San Francisco State University, Institute for Geographic Information Science; revised August 23, 2005.

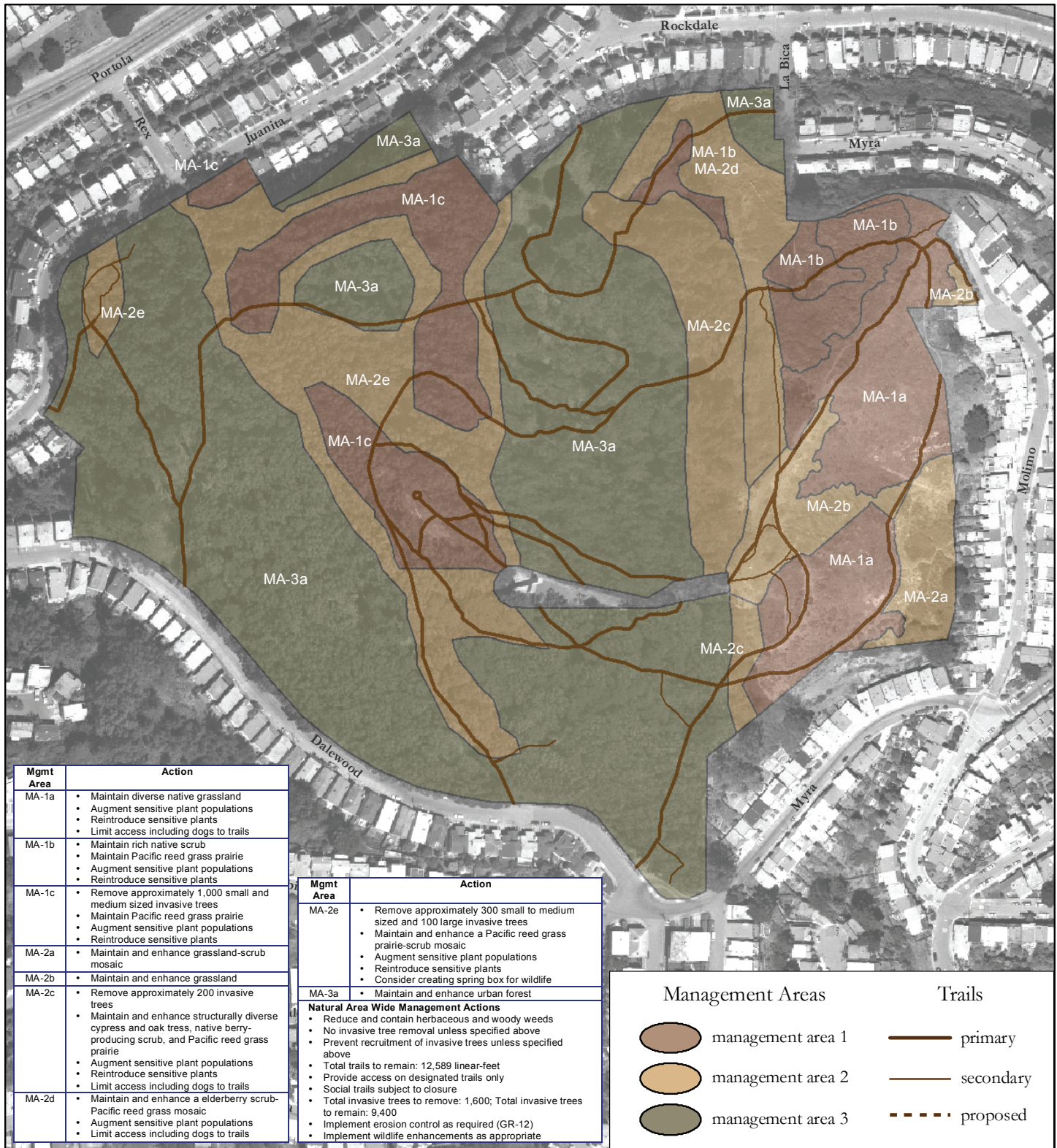
FIGURE 6.19 - 13

MANAGEMENT AREAS AND TRAIL PLAN

McLaren Park

Significant Natural Resource Areas Management Plan

San Francisco, California



Source: Management areas and trails data collected by San Francisco Department of Recreation and Park Natural Areas Program (NAP), 2005; trails data digitized by San Francisco State University Institute for GIS (SFSUGIS), 2005; streets data excerpted from Environmental Systems Research Institute (ESRI), Inc.'s Street-Map 2000 data copyright ESRI 1998-2001; aerial photography San Francisco Department of Public Works, 2002, Orthophoto - San Francisco - 1-foot resolution - 2001; all data are in California State Plane Zone III projection, NAD 1983; map produced using ArcGIS 9.0 software by ESRI.

Map created May 29, 2005 by Debra Dwyer, San Francisco State University, Institute for Geographic Information Science (SFSU IGIS); revised August 22, 2005.



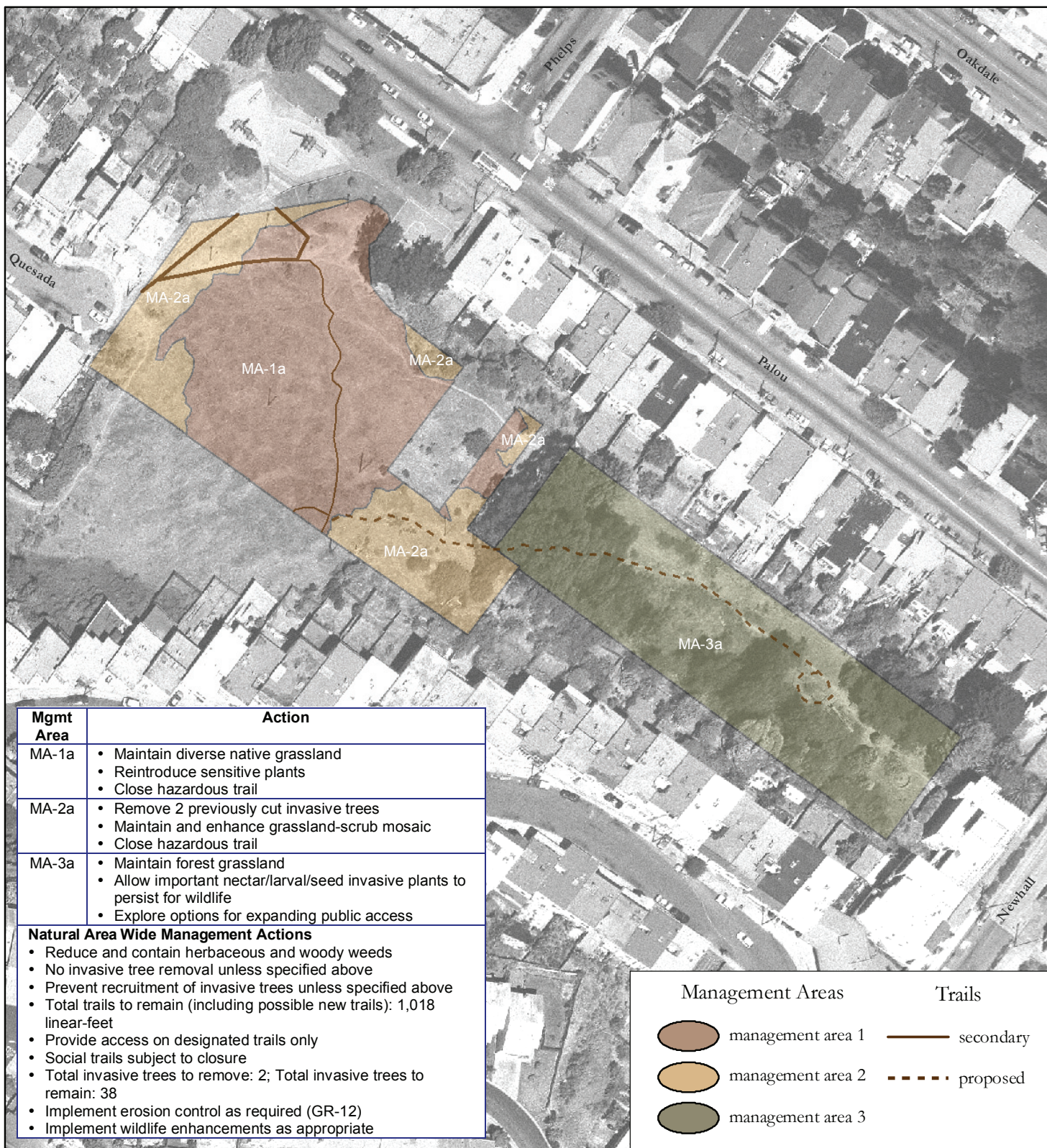
0 75 150 300
Feet

FIGURE 6.2 - 5 MANAGEMENT AREAS AND TRAIL PLAN

Mt. Davidson

Significant Natural Resource Areas Management Plan

San Francisco, California



Source: Management areas and trails data collected by San Francisco Department of Recreation and Park Natural Areas Program (NAP), 2005; trails data digitized by San Francisco State University Institute for GISc (SFSU IGIS), 2005; streets data excerpted from Environmental Systems Research Institute (ESRI), Inc.'s Street-Map 2000 data copyright ESRI 1998-2001; aerial photography San Francisco Department of Public Works, 2002, Orthophoto - San Francisco - 1-foot resolution - 2001; all data are in California State Plane Zone III projection, NAD 1983; map produced using ArcGIS 9.0 software by ESRI.

Map created May 29, 2005 by Debra Dwyer, San Francisco State University, Institute for Geographic Information Science; revised August 23, 2005.

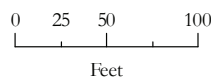
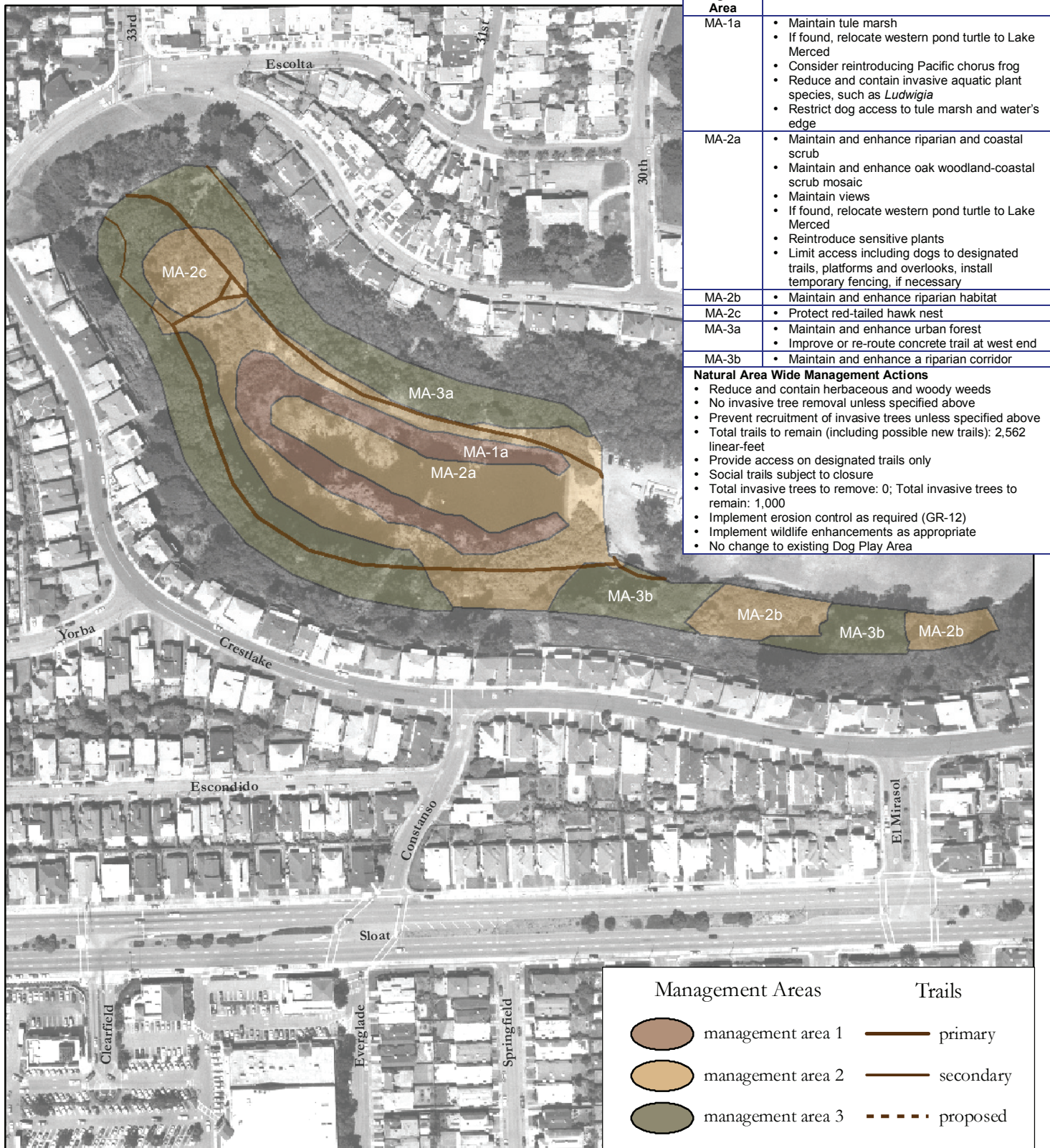


FIGURE 6.20 - 4 MANAGEMENT AREAS AND TRAIL PLAN

Palou Phelps

Significant Natural Resource Areas
Management Plan

San Francisco, California



Source: Management areas and trails data collected by San Francisco Department of Recreation and Park Natural Areas Program (NAP), 2005; trails data digitized by San Francisco State University Institute for GISc (SFSU IGIS), 2005; streets data excerpted from Environmental Systems Research Institute (ESRI), Inc.'s Street-Map 2000 data copyright ESRI 1998-2001; aerial photography San Francisco Department of Public Works, 2002, Orthophoto - San Francisco - 1-foot resolution - 2001; all data are in California State Plane Zone III projection, NAD 1983; map produced using ArcGIS 9.0 software by ESRI.

Map created May 29, 2005 by Debra Dwyer, San Francisco State University, Institute for Geographic Information Science; revised August 23, 2005.



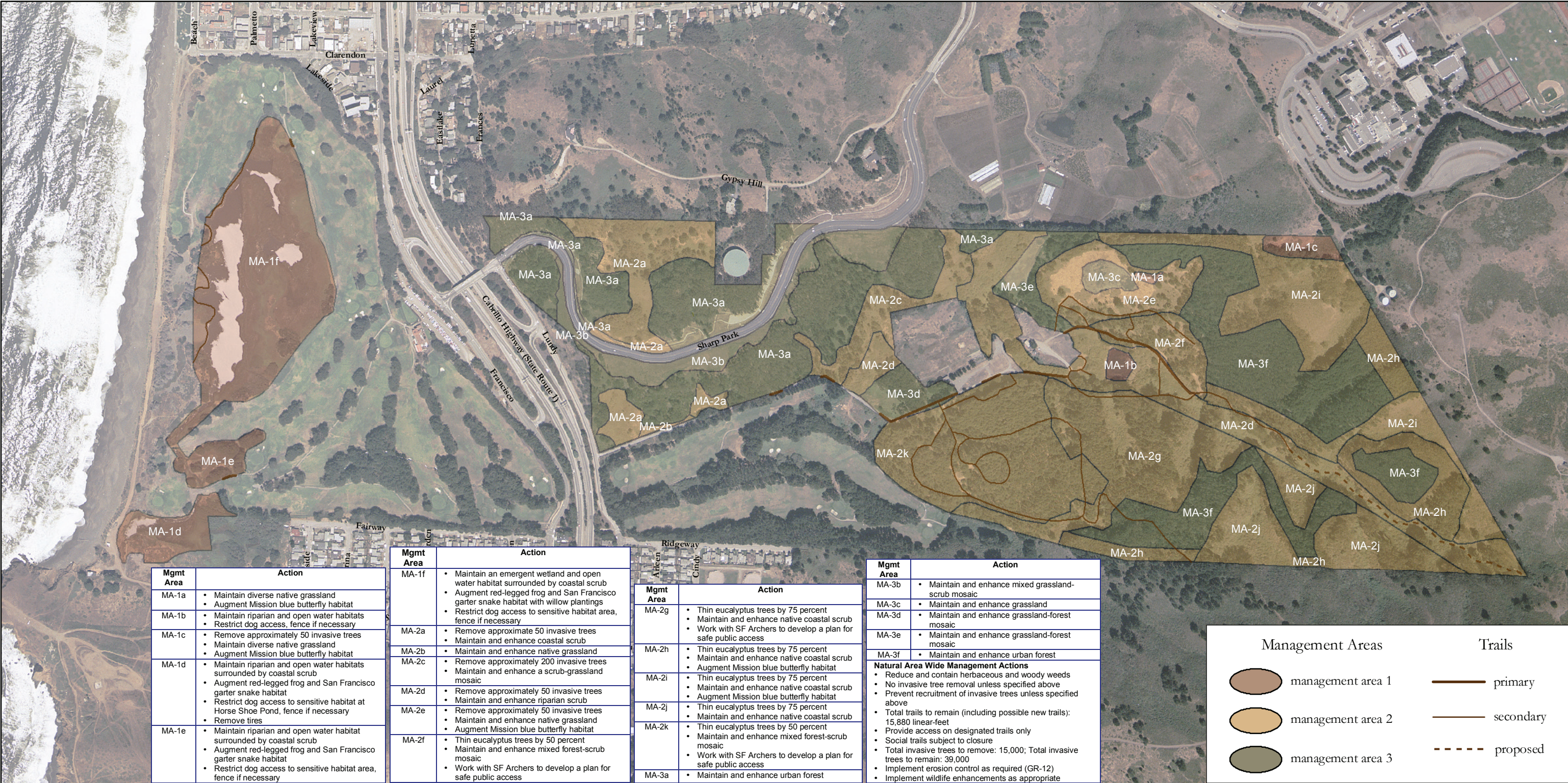
0 50 100 200
Feet

FIGURE 6.7 - 5 MANAGEMENT AREAS AND TRAIL PLAN

Pine Lake

Significant Natural Resource Areas
Management Plan

San Francisco, California



Source: Management areas and trails data collected by San Francisco Department of Recreation and Park Natural Areas Program (NAP), 2005; trails data digitized by San Francisco State University Institute for GISc (SFSU IGIS), 2005; streets data excerpted from Environmental Systems Research Institute (ESRI), Inc.'s StreetMap 2000 data copyright ESRI 1998-2001; aerial photography from HJW for NAP, 1995, 2-foot pixels; all data are in California State Plane Zone III projection, NAD 1983; map produced using ArcGIS 9.0 software by ESRI.

Map created May 28, 2005 by Debra Dwyer, San Francisco State University, Institute for Geographic Information Science; revised August 24, 2005.

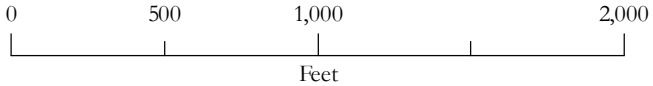
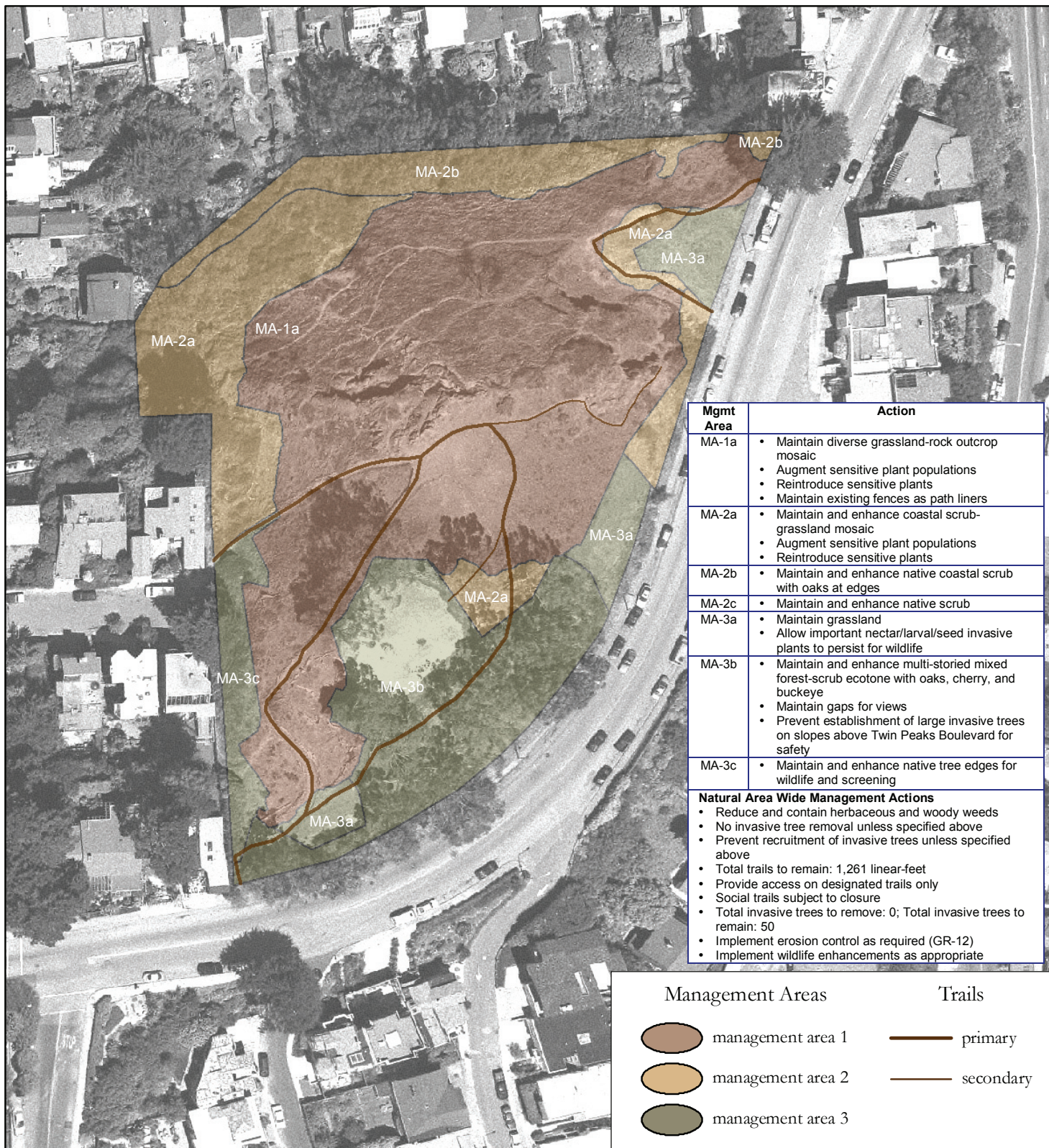


FIGURE 6.4-5
MANAGEMENT AREAS
AND TRAIL PLAN
Sharp Park
Significant Natural Resource Areas
Management Plan
San Francisco, California



Source: Management areas and trails data collected by San Francisco Department of Recreation and Park Natural Areas Program (NAP), 2005; trails data digitized by San Francisco State University Institute for GISc (SFSU IGIS), 2005; streets data excerpted from Environmental Systems Research Institute (ESRI), Inc.'s Street-Map 2000 data copyright ESRI 1998-2001; aerial photography San Francisco Department of Public Works, 2002, Orthophoto - San Francisco - 1-foot resolution - 2001; all data are in California State Plane Zone III projection, NAD 1983; map produced using ArcGIS 9.0 software by ESRI.

Map created May 29, 2005 by Debra Dwyer, San Francisco State University, Institute for Geographic Information Science; revised August 23, 2005.



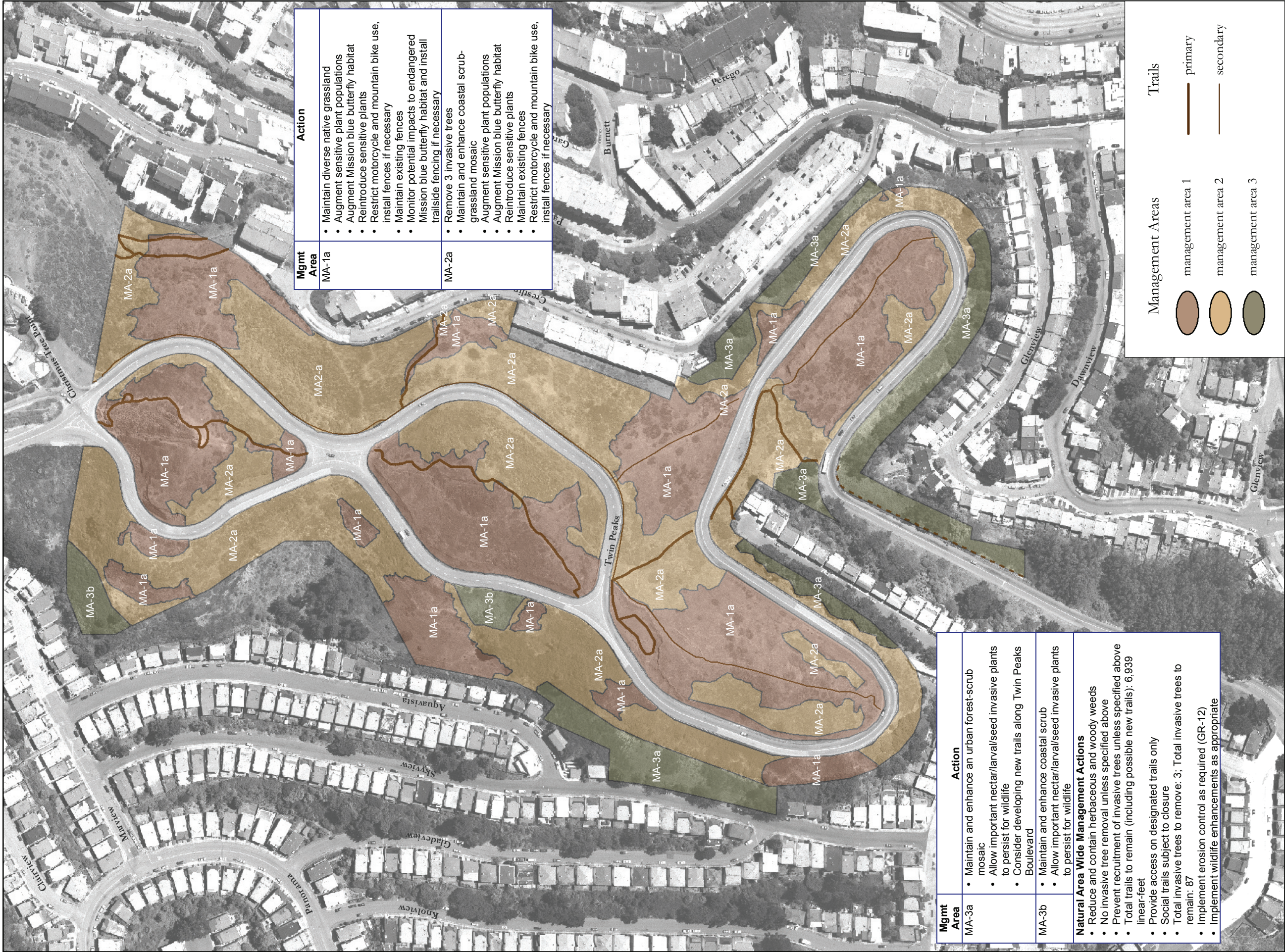
0 25 50 100
Feet

FIGURE 6.14 - 5 MANAGEMENT AREAS AND TRAIL PLAN

Tank Hill

Significant Natural Resource Areas
Management Plan

San Francisco, California



Source: Management areas and trails data collected by San Francisco Department of Recreation and Park Natural Areas Program (NAP), 2005; trails data digitized by San Francisco State University Institute for GISc (SFSU IGIS), 2005; streets data excerpted from Environmental Systems Research Institute (ESRI), Inc.'s StreetMap 2000 data copyright ESRI 1998-2001; aerial photography San Francisco Department of Public Works, 2002; Orthophoto - San Francisco - 1-foot resolution - 2001; all data are in California State Plane Zone III projection, NAD 1983; map produced using ArcGIS 9.0 software by ESRI.

Map created May 29, 2005 by Debra Dwyer, San Francisco State University, Institute for Geographic Information Science; revised October 11, 2005.



FIGURE 6.8 - 5

MANAGEMENT AREAS AND TRAIL PLAN

Twin Peaks

Significant Natural Resource Areas
Management Plan
San Francisco, California



Source: Management areas and trails data collected by San Francisco Department of Recreation and Park Natural Areas Program (NAP), 2005; trails data digitized by San Francisco State University Institute for GISc (SFSU IGIS), 2005; streets data excerpted from Environmental Systems Research Institute (ESRI), Inc.'s Street-Map 2000 data copyright ESRI 1998-2001; aerial photography San Francisco Department of Public Works, 2002, Orthophoto - San Francisco - 1-foot resolution - 2001; all data are in California State Plane Zone III projection, NAD 1983; map produced using ArcGIS 9.0 software by ESRI.

Map created May 28, 2005 by Debra Dwyer, San Francisco State University, Institute for Geographic Information Science; revised August 23, 2005.



0 15 30 60
Feet

FIGURE 6.16 - 4 MANAGEMENT AREAS AND TRAIL PLAN

15th Avenue Steps

Significant Natural Resource Areas
Management Plan

San Francisco, California



Source: Orthophoto - SFDT, 2007; Street Data - SFDPW, 2009;
Significant Natural Area Data created by RPD Planning from
information provided by RPD Natural Area Program, 2010;
All Data are NAD 1983 StatePlane California III FIPS 0403 Feet

Created by Sean Stasio, SFRPD Planning Division
for SFRPD Significant Natural Areas Program, NOVEMBER 2010

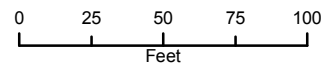


FIGURE 6.27-4
MANAGEMENT AREAS

Everson/Digby

Significant Natural Resource Areas
Management Plan

San Francisco, California