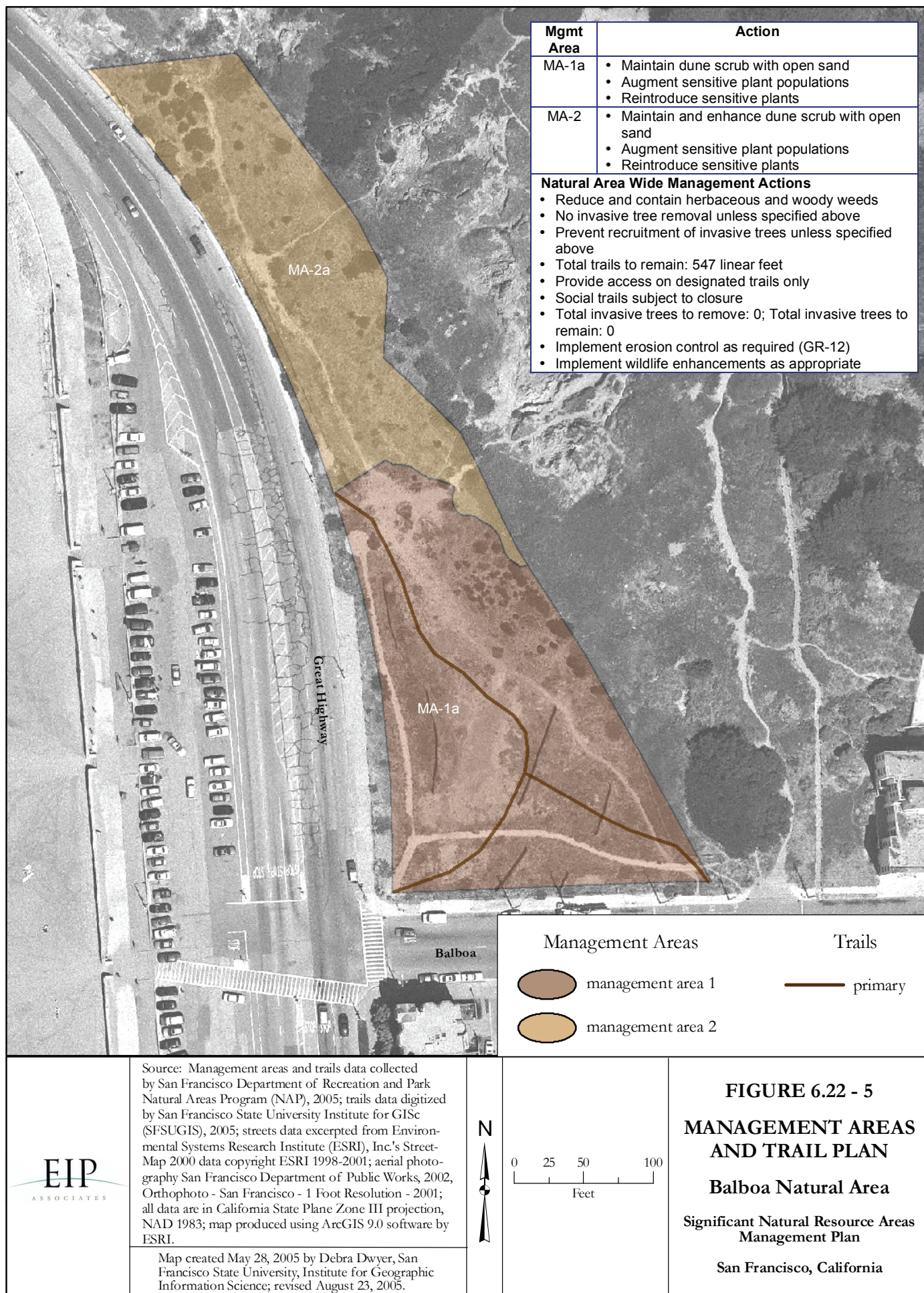
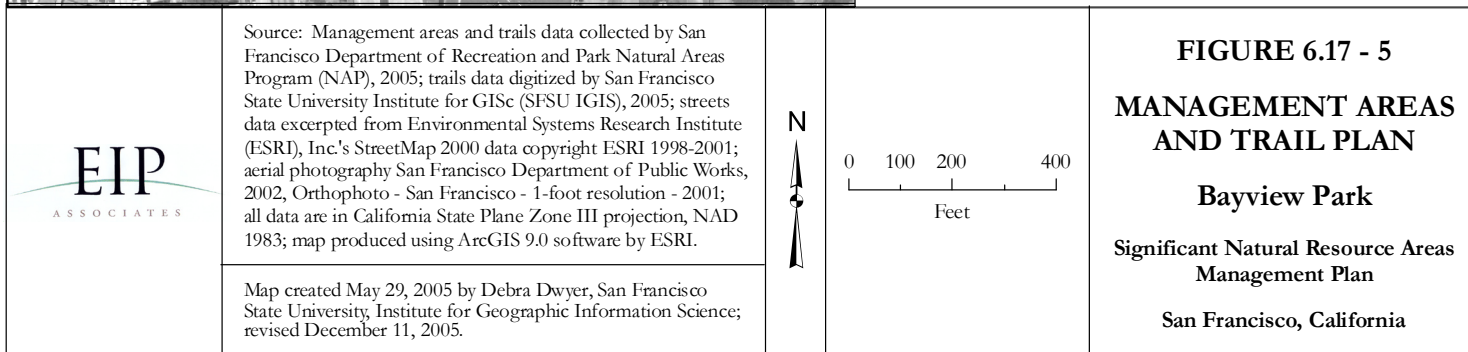


# APPENDIX B

## Maps of the Natural Areas









Mgmt Area	Action	Action
MA-3b	<ul style="list-style-type: none"> <li>Maintain and enhance scrub-grassland-urban forest mosaic</li> </ul>	<ul style="list-style-type: none"> <li>Maintain and enhance scrub-grassland-urban forest mosaic</li> </ul>
<b>Natural Area Wide Management Actions</b> <ul style="list-style-type: none"> <li>Reduce and contain herbaceous and woody weeds</li> <li>No invasive tree removal unless specified above</li> <li>Prevent recruitment of invasive trees unless specified above</li> <li>Total trails to remain (including possible new trails): 8,159 linear-feet</li> <li>Provide access on designated trails only</li> <li>Social trails subject to closure</li> <li>Total invasive trees to remove: 0; Total invasive trees to remain: 100</li> <li>Implement erosion control as required (GR-12)</li> <li>Implement wildlife enhancements as appropriate</li> <li>No change to existing Dog Play Area unless specified above</li> </ul>		
MA-1a	<ul style="list-style-type: none"> <li>Maintain diverse native grassland</li> <li>Augment sensitive plant populations</li> <li>Reintroduce sensitive plants</li> <li>Reroute lowest trail</li> <li>Create designated trails and access points.</li> <li>Install low fencing if necessary</li> <li>Partially modify existing Dog Play Areas to on-leash</li> </ul>	<ul style="list-style-type: none"> <li>Maintain diverse native grassland</li> <li>Augment sensitive plant populations</li> <li>Reintroduce sensitive plants</li> </ul>
MA-1b	<ul style="list-style-type: none"> <li>Maintain diverse native grassland</li> <li>Augment sensitive plant populations</li> <li>Reintroduce sensitive plants</li> </ul>	<ul style="list-style-type: none"> <li>Maintain diverse native grassland</li> </ul>
MA-1c	<ul style="list-style-type: none"> <li>Maintain diverse native grassland</li> </ul>	
MA-2a	<ul style="list-style-type: none"> <li>Maintain and enhance grassland</li> <li>Reintroduce sensitive plants</li> </ul>	
MA-3a	<ul style="list-style-type: none"> <li>Maintain and enhance native grassland</li> <li>Allow important nectar/larval/seed invasive plants to persist for wildlife</li> </ul>	



Source: Management areas and trails data collected by San Francisco Department of Recreation and Park Natural Areas Program (NAP), 2005; trails data digitized by San Francisco State University, Institute for GISc (SFISU IGIS), 2005; streets data excerpted from Environmental Systems Research Institute (ESRI), Inc.'s StreetMap 2000 data copyright ESRI 1998-2001; aerial photography San Francisco Department of Public Works, 2002, Orthophoto - San Francisco - 1 Foot Resolution - 2001; all data are in California State Plane Zone III projection, NAD 1983; map produced using ArcGIS 9.0 software by ESRI.

Map created May 28, 2005 by Debra Dwyer, San Francisco State University, Institute for Geographic Information Science. Revised August 23, 2005.

FIGURE 6.21 - 5

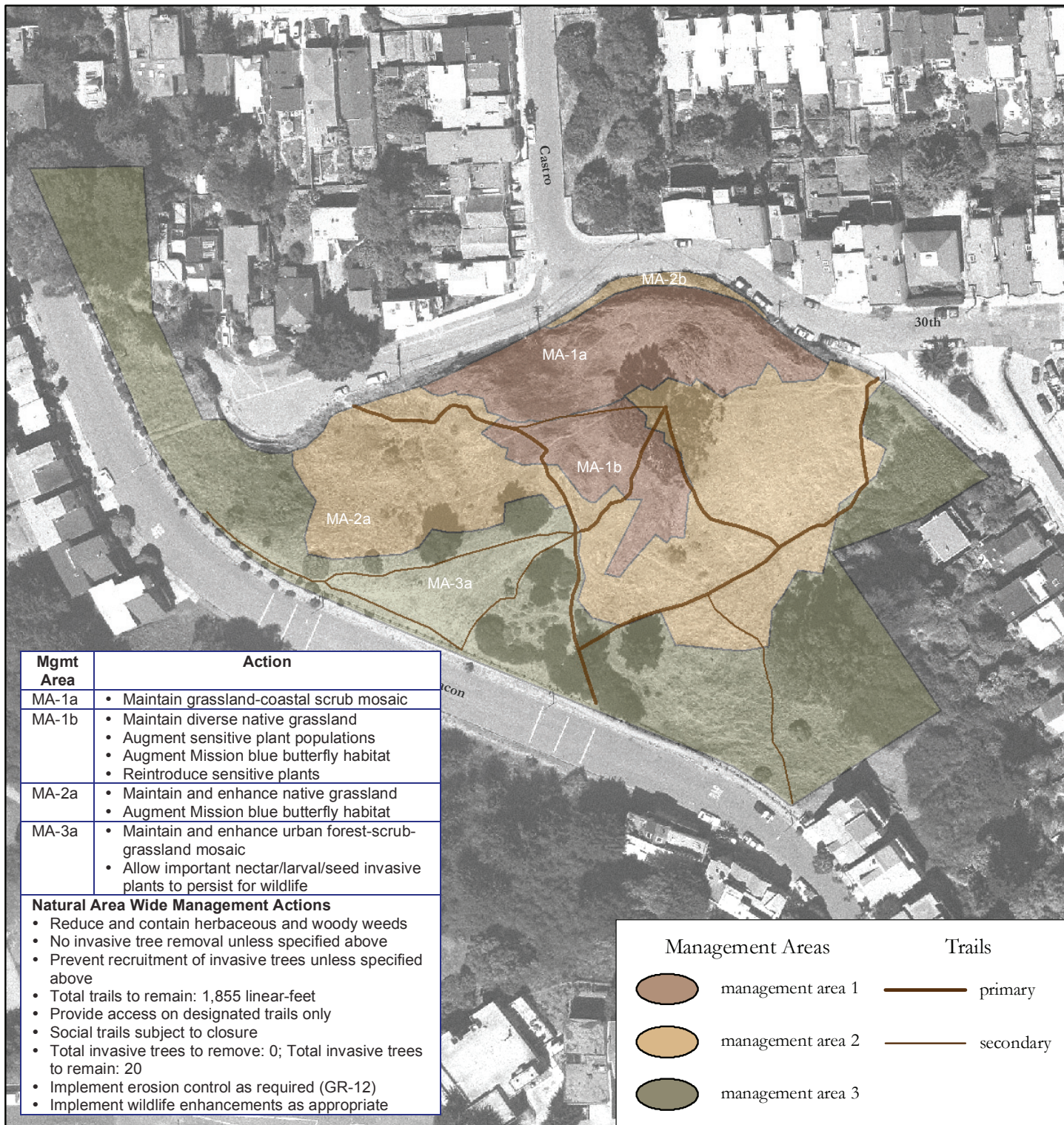
**MANAGEMENT AREAS AND TRAIL PLAN**

**Bernal Hill**

Significant Natural Resource Areas Management Plan

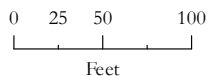
San Francisco





Source: Management areas and trails data collected by San Francisco Department of Recreation and Park Natural Areas Program (NAP), 2005; trails data digitized by San Francisco State University Institute for GISc (SFSUGIS), 2005; streets data excerpted from Environmental Systems Research Institute (ESRI), Inc.'s Street-Map 2000 data copyright ESRI 1998-2001; aerial photography San Francisco Department of Public Works, 2002, Orthophoto - San Francisco - 1 Foot Resolution - 2001; all data are in California State Plane Zone III projection, NAD 1983; map produced using ArcGIS 9.0 software by ESRI.

Map created May 28, 2005 by Debra Dwyer, San Francisco State University, Institute for Geographic Information Science; revised August 23, 2005.



## FIGURE 6.9 - 4 MANAGEMENT AREAS AND TRAIL PLAN

### Billy Goat

Significant Natural Resource Areas  
Management Plan

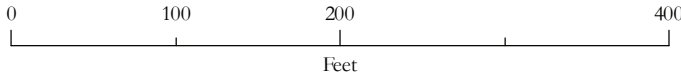
San Francisco, California





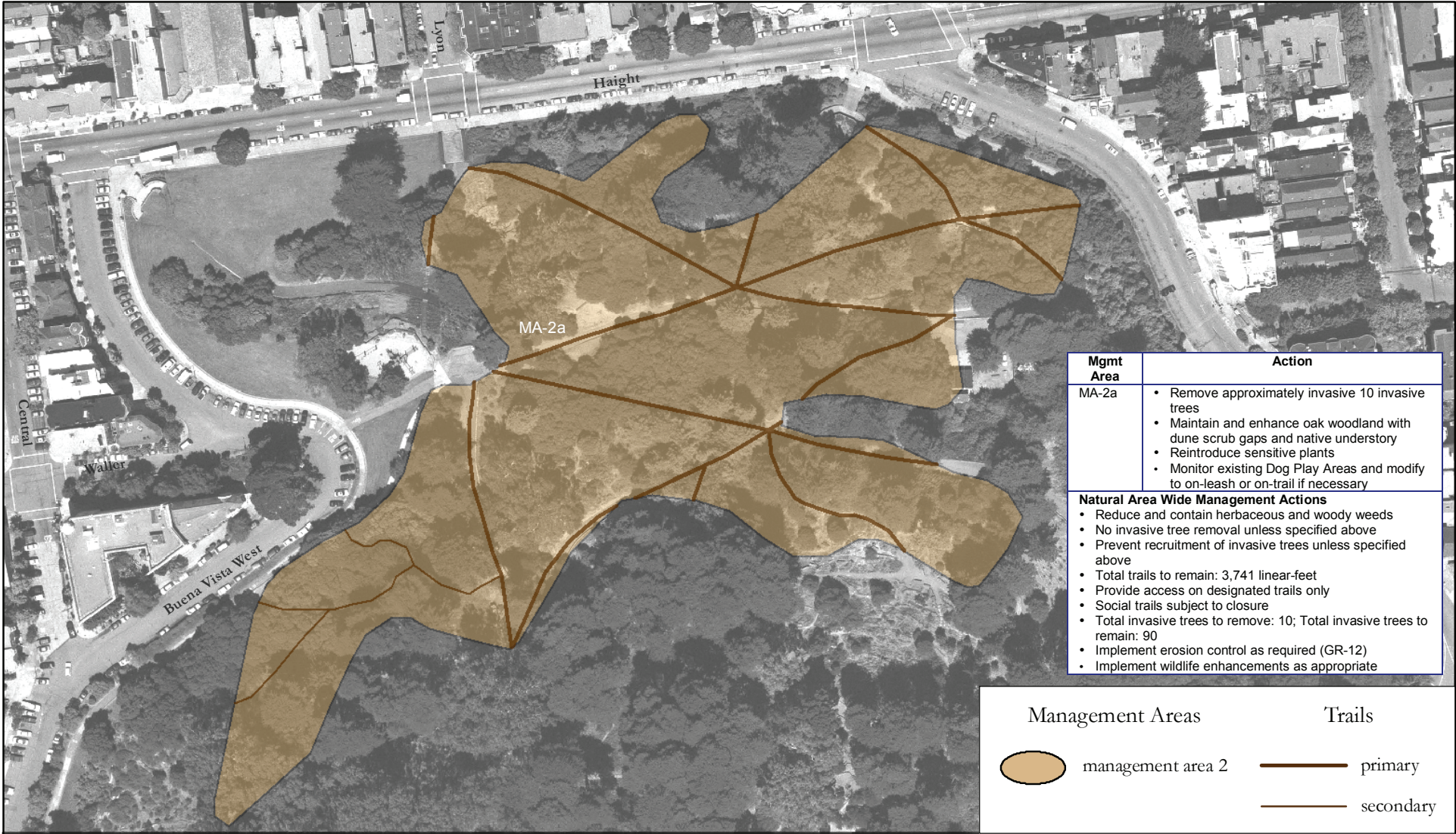
Source: Management areas and trails data collected by San Francisco Department of Recreation and Park Natural Areas Program (NAP), 2005; trails data digitized by San Francisco State University, Institute for GISc (SFSU IGIS), 2005; streets data excerpted from Environmental Systems Research Institute (ESRI), Inc.'s StreetMap 2000 data copyright ESRI 1998-2001; aerial photography San Francisco Department of Public Works, 2002, Orthophoto - San Francisco - 1 Foot Resolution - 2001: City of San Francisco Department of Public Works, San Francisco; all data are in California State Plane Zone III projection, NAD 1983; map produced using ArcGIS 9.0 software by ESRI.

Map created May 30, 2005 by Debra Dwyer, San Francisco State University, Institute for Geographic Information Science; revised August 23, 2005.



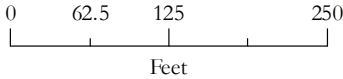
**FIGURE 6.6 - 5**  
**MANAGEMENT AREAS**  
**AND TRAIL PLAN**  
**Brooks Park and**  
**Lakeview/Ashton Mini Park**  
**Significant Natural Resource Areas**  
**Management Plan**  
**San Francisco, California**





Source: Management areas and trails data collected by San Francisco Department of Recreation and Park Natural Areas Program (NAP), 2005; trails data digitized by San Francisco State University Institute for GISc (SFSUGIS), 2005; streets data excerpted from Environmental Systems Research Institute (ESRI), Inc.'s StreetMap 2000 data copyright ESRI 1998-2001; aerial photography San Francisco Department of Public Works, 2002, Orthophoto - San Francisco - 1 Foot Resolution - 2001; all data are in California State Plane Zone III projection, NAD 1983; map produced using ArcGIS 9.0 software by ESRI.

Map created May 28, 2005 by Debra Dwyer, San Francisco State University, Institute for Geographic Information Science; revised August 23, 2005.



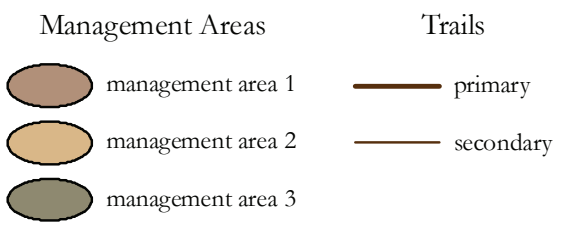
**FIGURE 6.10 - 5**  
**MANAGEMENT AREAS**  
**AND TRAIL PLAN**  
**Buena Vista Park**  
**Significant Natural Resource Areas**  
**Management Plan**  
**San Francisco, California**





Mgmt Area	Action
MA-1a	<ul style="list-style-type: none"> <li>Remove 1 invasive tree</li> <li>Maintain diverse native grassland</li> <li>Augment sensitive plant populations</li> </ul>
MA-1b	<ul style="list-style-type: none"> <li>Maintain diverse native grassland</li> <li>Augment sensitive plant populations</li> <li>Reintroduce sensitive species</li> <li>Discourage use of steep western slopes by dogs and people. Install fences if necessary</li> </ul>
MA-1c	<ul style="list-style-type: none"> <li>Maintain diverse native grassland</li> <li>Augment sensitive plant populations</li> <li>Reintroduce sensitive species</li> <li>Discourage use of steep western slopes by dogs and people. Install fences if necessary</li> </ul>
MA-2a	<ul style="list-style-type: none"> <li>Maintain and enhance coastal scrub-grassland mosaic</li> </ul>
MA-2b	<ul style="list-style-type: none"> <li>Maintain and enhance coastal scrub-grassland mosaic, with oaks at margin for wildlife</li> <li>Discourage use of steep western slopes by dogs and people. Install fences if necessary</li> </ul>
MA-2c	<ul style="list-style-type: none"> <li>Remove 4 invasive trees</li> <li>Maintain and enhance oak woodland</li> </ul>
MA-2d	<ul style="list-style-type: none"> <li>Remove approximately 10 invasive trees</li> <li>Maintain and enhance grassland-coastal scrub-oak woodland mosaic</li> <li>Reintroduce sensitive plants</li> </ul>

Mgmt Area	Action
MA-3a	<ul style="list-style-type: none"> <li>Maintain and enhance coastal scrub</li> </ul>
MA-3b	<ul style="list-style-type: none"> <li>Maintain and enhance urban forest</li> </ul>
MA-3c	<ul style="list-style-type: none"> <li>Maintain and enhance urban forest-grassland mosaic</li> <li>Allow important nectar/larval/seed invasive plants to persist for wildlife</li> </ul>
MA-3d	<ul style="list-style-type: none"> <li>Maintain and enhance coastal scrub-grassland-urban forest mosaic</li> <li>Allow important nectar/larval/seed invasive plants to persist for wildlife</li> <li>Plant shrubs and trees to connect wildlife habitat</li> </ul>
<b>Natural Area Wide Management Actions</b> <ul style="list-style-type: none"> <li>Reduce and contain herbaceous and woody weeds</li> <li>No invasive tree removal unless specified above</li> <li>Prevent recruitment of invasive trees unless specified above</li> <li>Total trails to remain: 4,856 linear-feet</li> <li>Provide access on designated trails only</li> <li>Social trails subject to closure</li> <li>Total invasive trees to remove: 15; Total invasive trees to remain: 185</li> <li>Implement erosion control as required (GR-12)</li> <li>Implement wildlife enhancements as appropriate</li> <li>No change to existing Dog Play Area</li> </ul>	



Source: Management areas and trails data collected by San Francisco Department of Recreation and Park Natural Areas Program (NAP), 2005; trails data digitized by San Francisco State University Institute for GISc (SFSU IGIS), 2005; streets data excerpted from Environmental Systems Research Institute (ESRI), Inc.'s StreetMap 2000 data copyright ESRI 1998-2001; aerial photography San Francisco Department of Public Works, 2002, Orthophoto - San Francisco - 1-foot resolution - 2001; all data are in California State Plane Zone III projection, NAD1983; map produced using ArcGIS 9.0 software by ESRI.

Map created May 29, 2005 by Debra Dwyer, San Francisco State University, Institute for Geographic Information Science; revised August 23, 2005.

N

0 37.5 75 150

Feet

**FIGURE 6.11 - 5**

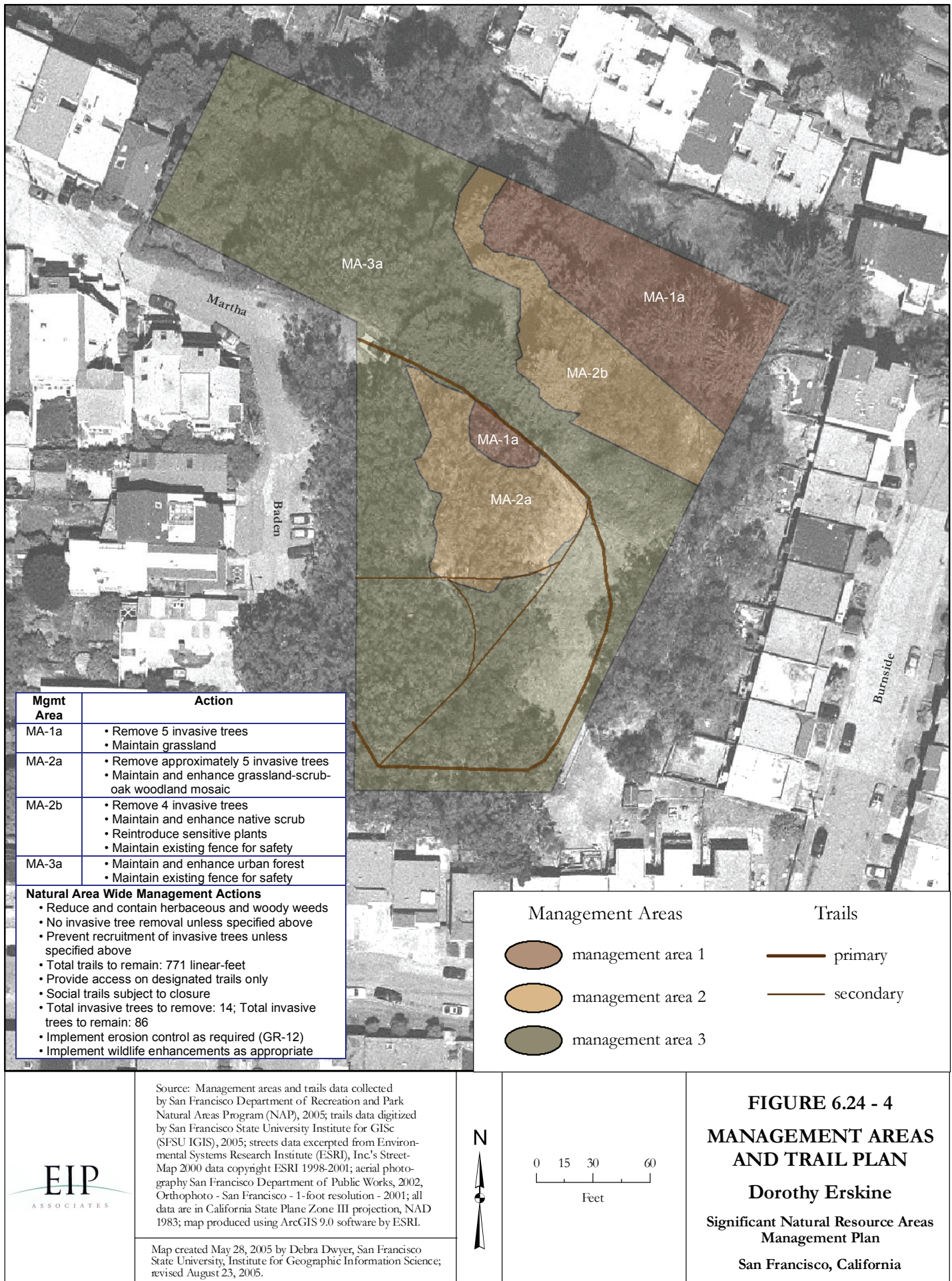
**MANAGEMENT AREAS AND TRAIL PLAN**

**Corona Heights**

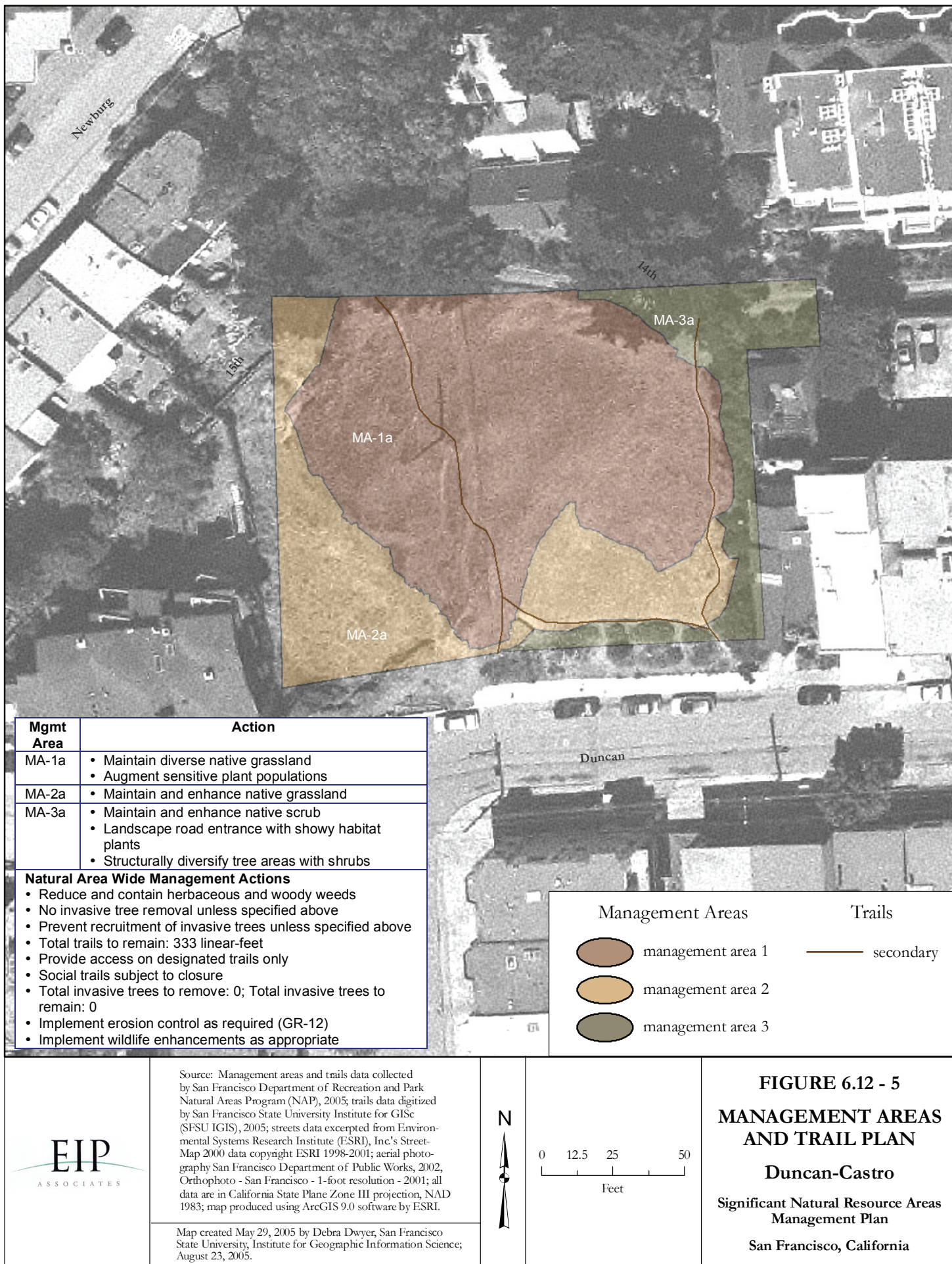
**Significant Natural Resource Areas Management Plan**

**San Francisco, California**

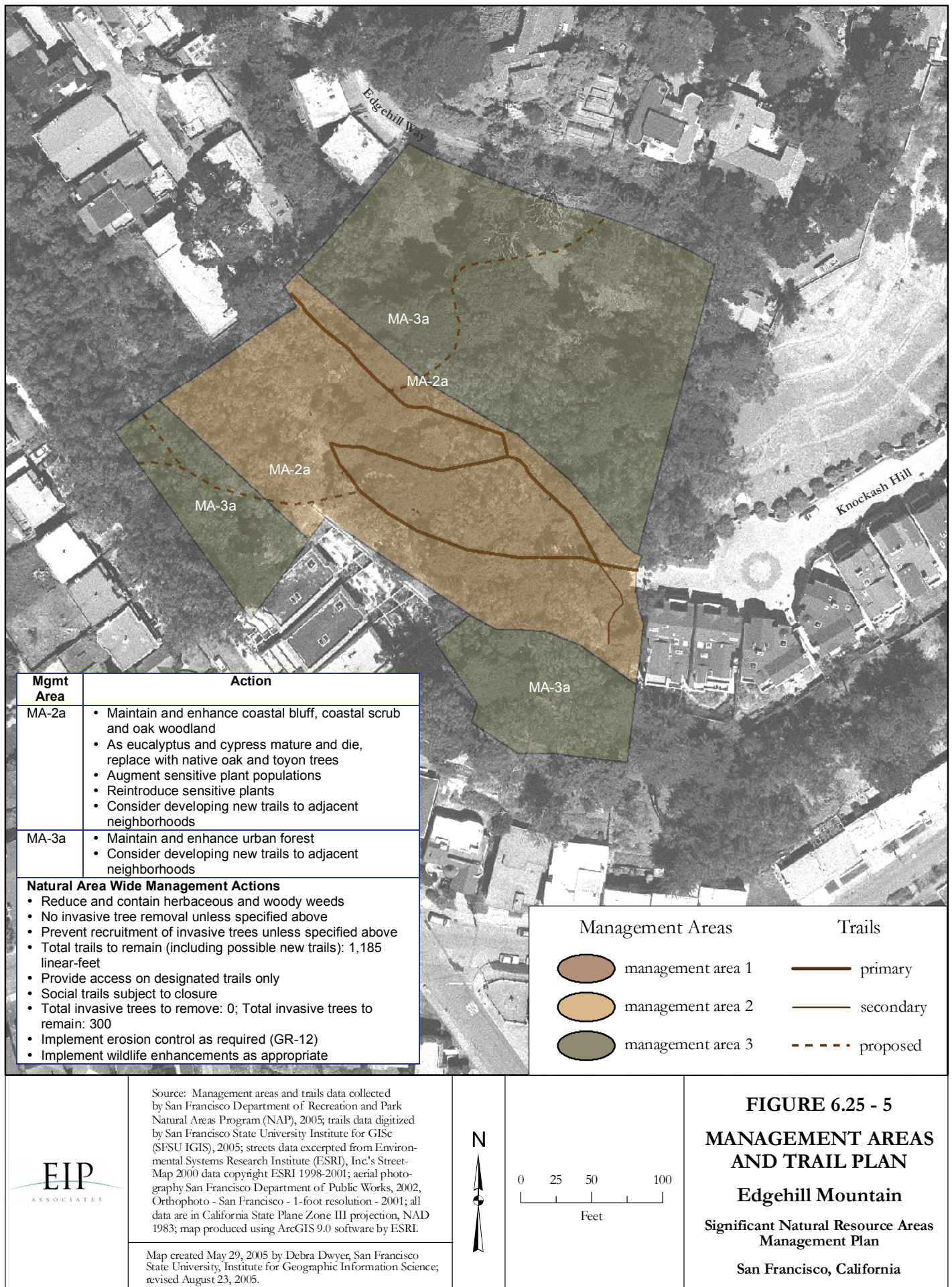




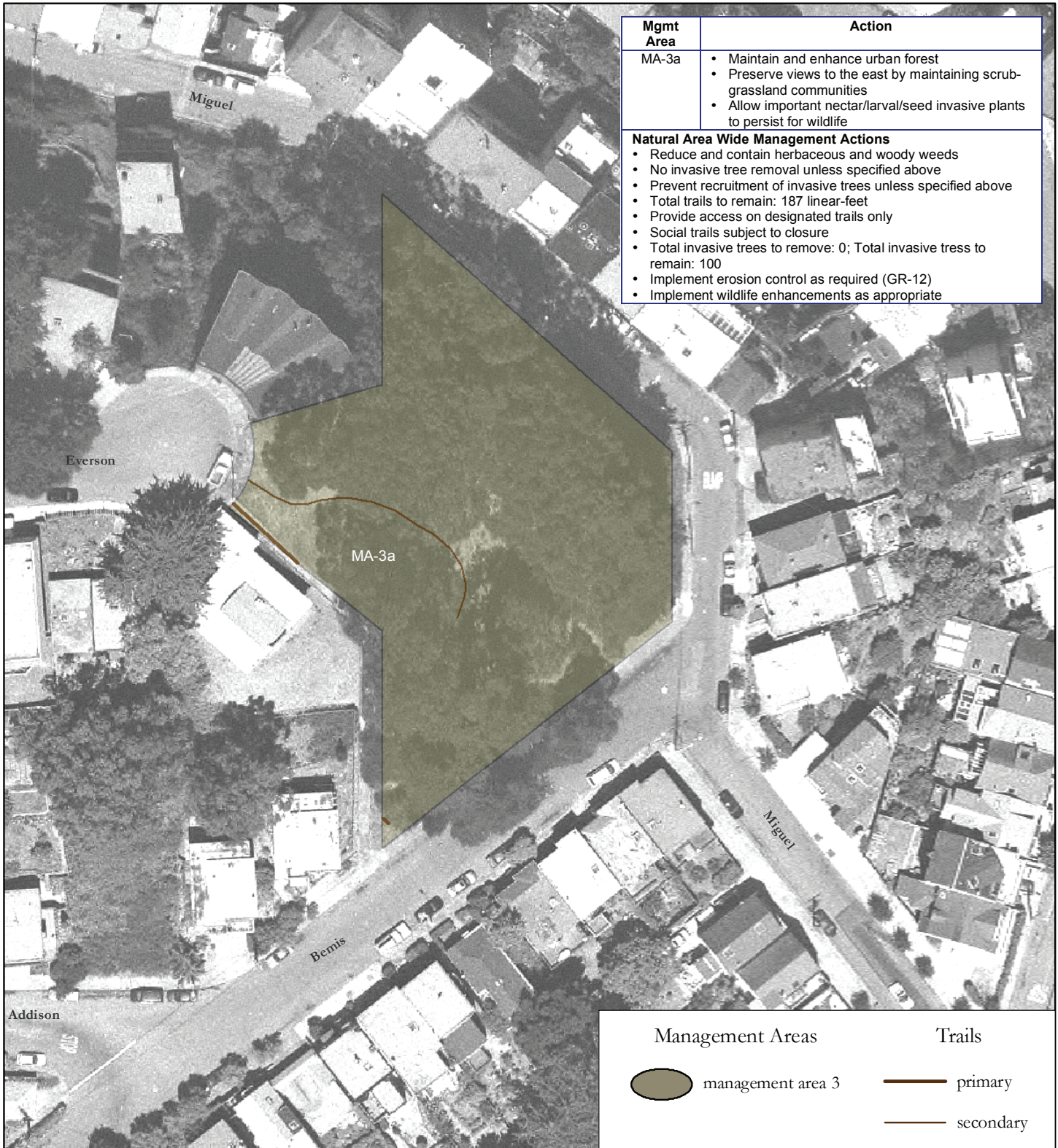












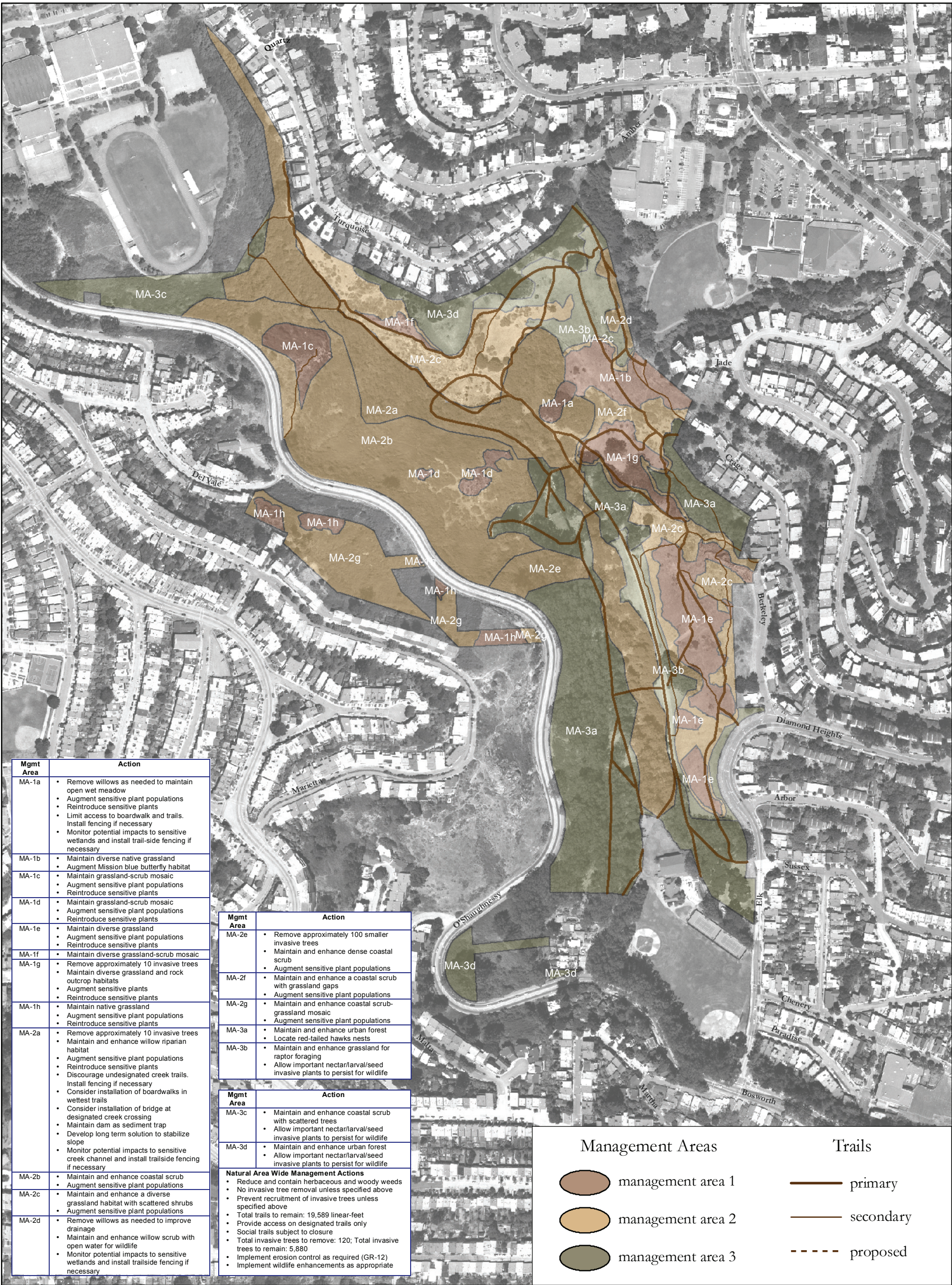
Source: Management areas and trails data collected by San Francisco Department of Recreation and Park Natural Areas Program (NAP), 2005; trails data digitized by San Francisco State University Institute for GISc (SFSU IGIS), 2005; streets data excerpted from Environmental Systems Research Institute (ESRI), Inc.'s StreetMap 2000 data copyright ESRI 1998-2001; aerial photography San Francisco Department of Public Works, 2002, Orthophoto - San Francisco - 1-foot resolution - 2001; all data are in California State Plane Zone III projection, NAD 1983; map produced using ArcGIS 9.0 software by ESRI.

Map created May 29, 2005 by Debra Dwyer, San Francisco State University, Institute for Geographic Information Science; revised August 23, 2005.



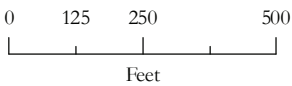
**FIGURE 6.26 - 4**  
**MANAGEMENT AREAS**  
**AND TRAIL PLAN**  
**Fairmount Park**  
**Significant Natural Resource Areas**  
**Management Plan**  
**San Francisco, California**





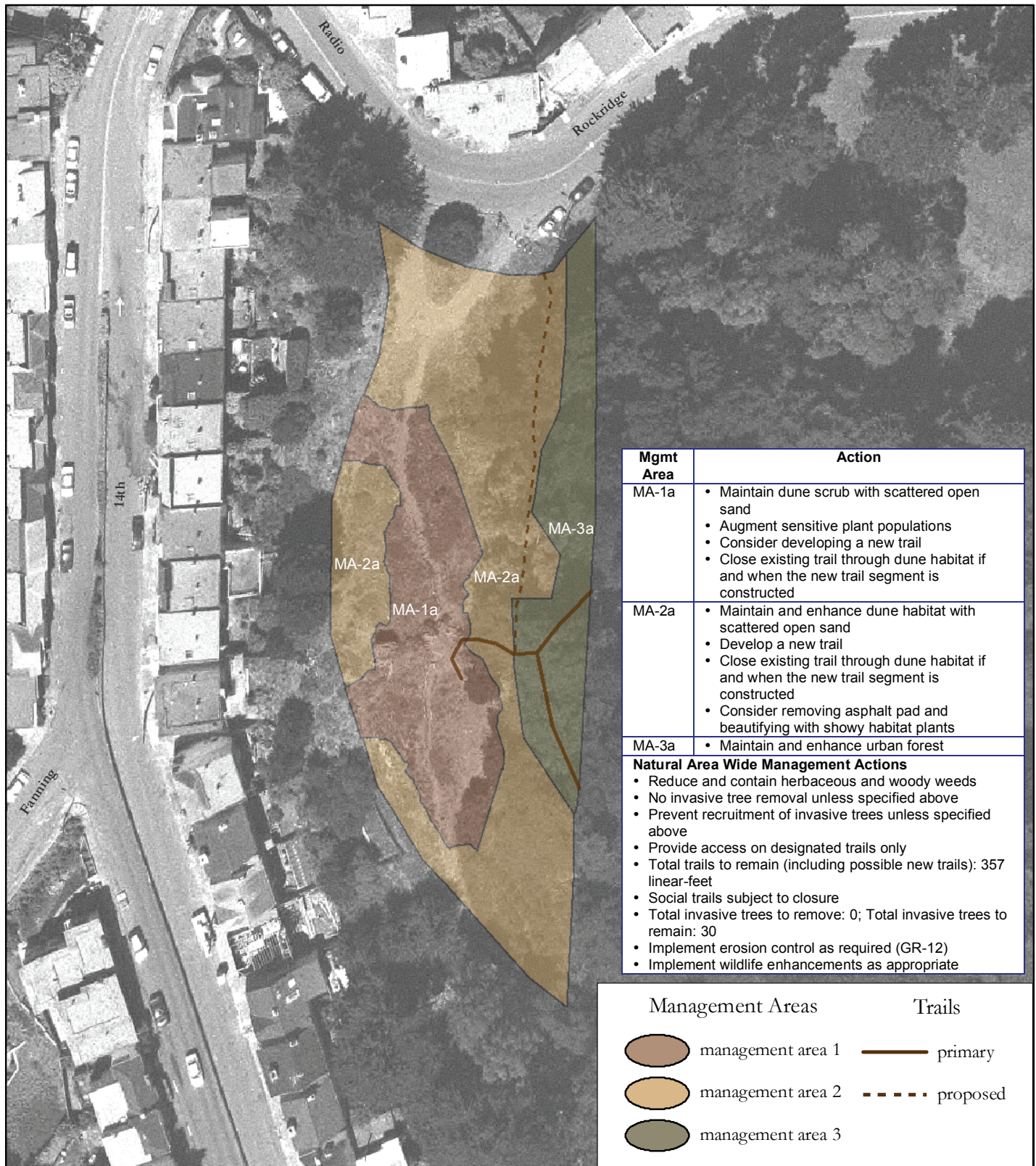
Source: Management areas and trails data collected by San Francisco Department of Recreation and Park Natural Areas Program (NAP), 2005; trails data digitized by San Francisco State University Institute for GISc (SFSU IGIS), 2005; streets data excerpted from Environmental Systems Research Institute (ESRI), Inc.'s Street-Map 2000 data copyright ESRI 1998-2001; aerial photography San Francisco Department of Public Works, 2002, Orthophoto - San Francisco - 1-foot resolution - 2001; all data are in California State Plane Zone III projection, NAD 1983; map produced using ArcGIS 9.0 software by ESRI.

Map created May 28, 2005 by Debra Dwyer, San Francisco State University, Institute for Geographic Information Science; revised August 23, 2005.



**FIGURE 6.3 - 5**  
**MANAGEMENT AREAS**  
**AND TRAIL PLAN**  
**Glen Canyon and**  
**O'Shaughnessy Hollow**  
**Significant Natural Resource Areas**  
**Management Plan**  
**San Francisco, California**





Source: Management areas and trails data collected by San Francisco Department of Recreation and Park Natural Areas Program (NAP), 2005; trails data digitized by San Francisco State University Institute for GISc (SFSUGIS), 2005; streets data excerpted from Environmental Systems Research Institute (ESRI), Inc.'s Street-Map 2000 data copyright ESRI 1998-2001; aerial photography San Francisco Department of Public Works, 2002, Orthophoto - San Francisco - 1-foot resolution - 2001; all data are in California State Plane Zone III projection, NAD 1983; map produced using ArcGIS 9.0 software by ESRI.

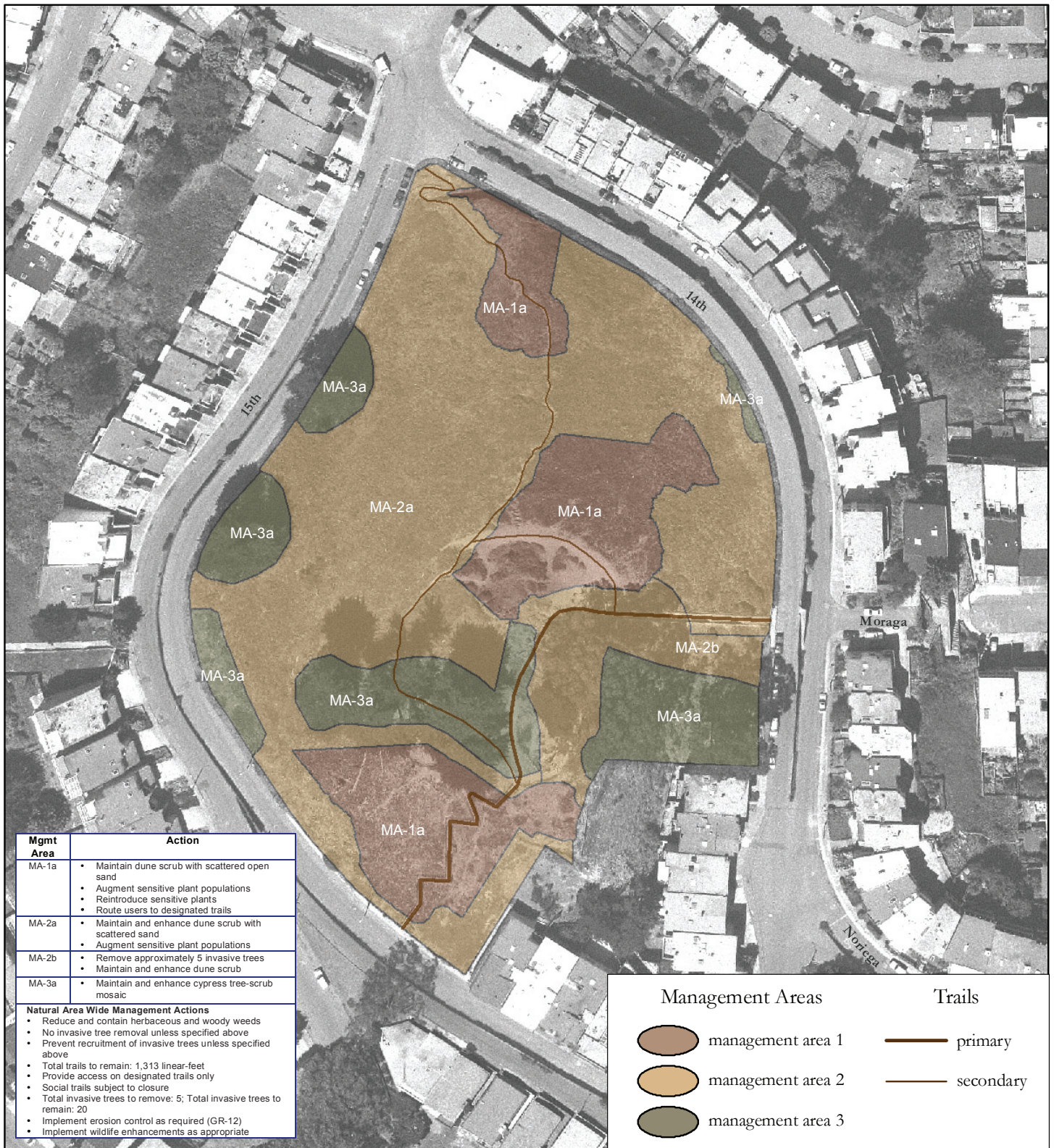
Map created May 29, 2005 by Debra Dwyer, San Francisco State University, Institute for Geographic Information Science; revised August 23, 2005.



0 15 30 60  
Feet

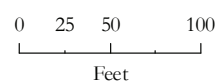
**FIGURE 6.5 - 19**  
**MANAGEMENT AREAS**  
**AND TRAIL PLAN**  
**Golden Gate Heights**  
**Significant Natural Resource Areas**  
**Management Plan**  
**San Francisco, California**





Source: Management areas and trails data collected by San Francisco Department of Recreation and Park Natural Areas Program (NAP), 2005; trails data digitized by San Francisco State University Institute for GISc (SFSU IGIS), 2005; streets data excerpted from Environmental Systems Research Institute (ESRI), Inc.'s StreetMap 2000 data copyright ESRI 1998-2001; aerial photography San Francisco Department of Public Works, 2002, Orthophoto - San Francisco - 1-foot resolution - 2001; all data are in California State Plane Zone III projection, NAD 1983; map produced using ArcGIS 9.0 software by ESRI.

Map created May 29, 2005 by Debra Dwyer, San Francisco State University, Institute for Geographic Information Science; revised August 23, 2005.



**FIGURE 6.5 - 17**  
**MANAGEMENT AREAS**  
**AND TRAIL PLAN**  
**Grandview**  
**Significant Natural Resource Areas**  
**Management Plan**  
**San Francisco, California**





Source: Management areas and trails data collected by San Francisco Department of Recreation and Park Natural Areas Program (NAP), 2005; trails data digitized by San Francisco State University Institute for GISc (SFSU IGIS), 2005; streets data excerpted from Environmental Systems Research Institute (ESRI), Inc.'s StreetMap 2000 data copyright ESRI 1998-2001; aerial photography San Francisco Department of Public Works, 2002, Orthophoto - San Francisco - 1 Foot Resolution - 2001; all data are in California State Plane Zone III projection, NAD 1983; map produced using ArcGIS 9.0 software by ESRI.

Map created May 28, 2005 by Debra Dwyer, San Francisco State University, Institute for Geographic Information Science; revised August 23, 2005.

**FIGURE 6.5 - 20**

**MANAGEMENT AREAS AND TRAIL PLAN**

**Hawk Hill**

Significant Natural Resource Areas Management Plan

San Francisco, California

0 50 100 200 Feet

N

**Management Areas**

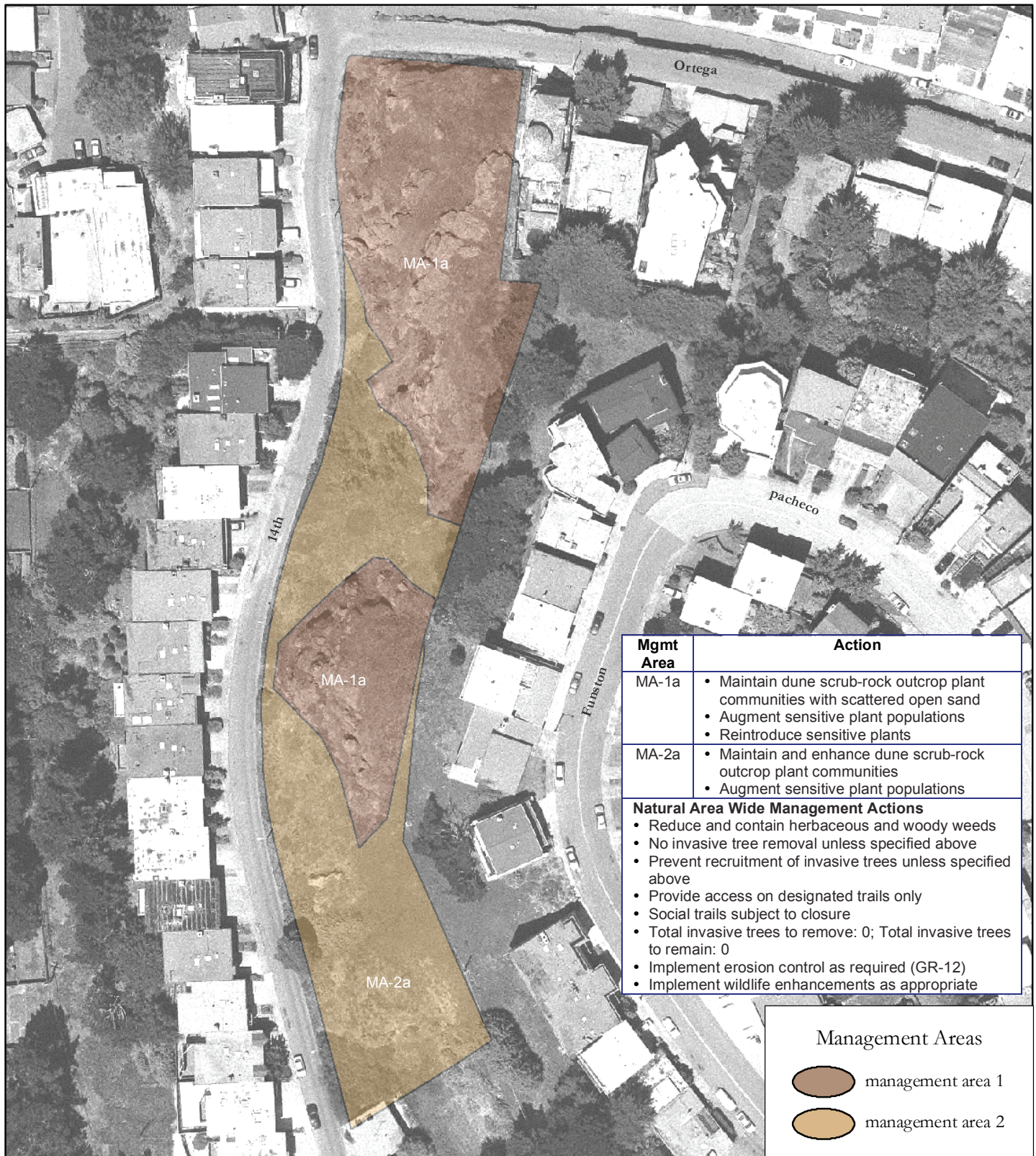
management area 1 — management area 2

**Trails**

— primary — secondary

Mgmt Area	Action
MA-1a	<ul style="list-style-type: none"> <li>Maintain dune scrub with scattered open sand</li> <li>Augment sensitive plant populations</li> <li>Reintroduce sensitive plants</li> <li>Consider installing a sand ladder on secondary trails</li> <li>Limit access to designated trails, fence if necessary</li> </ul>
MA-2a	<ul style="list-style-type: none"> <li>Maintain and enhance dune scrub with scattered open sand</li> <li>Augment sensitive plant populations</li> <li>Limit access to designated trails, fence if necessary</li> </ul>
<b>Natural Area Wide Management Actions</b> <ul style="list-style-type: none"> <li>Reduce and contain herbaceous and woody weeds</li> <li>No invasive tree removal unless specified above</li> <li>Prevent recruitment of invasive trees unless specified above</li> <li>Provide access on designated trails</li> <li>Total trails to remain: 917 linear-feet</li> <li>Social trails subject to closure</li> <li>Total invasive trees to remove: 0; Total invasive trees to remain: 10</li> <li>Implement erosion control as required (GR-12)</li> <li>Implement wildlife enhancements as appropriate</li> </ul>	





Source: Management areas and trails data collected by San Francisco Department of Recreation and Park Natural Areas Program (NAP), 2005; trails data digitized by San Francisco State University Institute for GISc (SFSU IGIS), 2005; streets data excerpted from Environmental Systems Research Institute (ESRI), Inc.'s Street-Map 2000 data copyright ESRI 1998-2001; aerial photography San Francisco Department of Public Works, 2002, Orthophoto - San Francisco - 1-foot resolution - 2001; all data are in California State Plane Zone III projection, NAD 1983; map produced using ArcGIS 9.0 software by ESRI.

Map created May 29, 2005 by Debra Dwyer, San Francisco State University, Institute for Geographic Information Science; revised August 23, 2005.

N

0 25 50 100

Feet

**FIGURE 6.5 - 18**

**MANAGEMENT AREAS**

**AND TRAIL PLAN**

**Rock Outcrop**

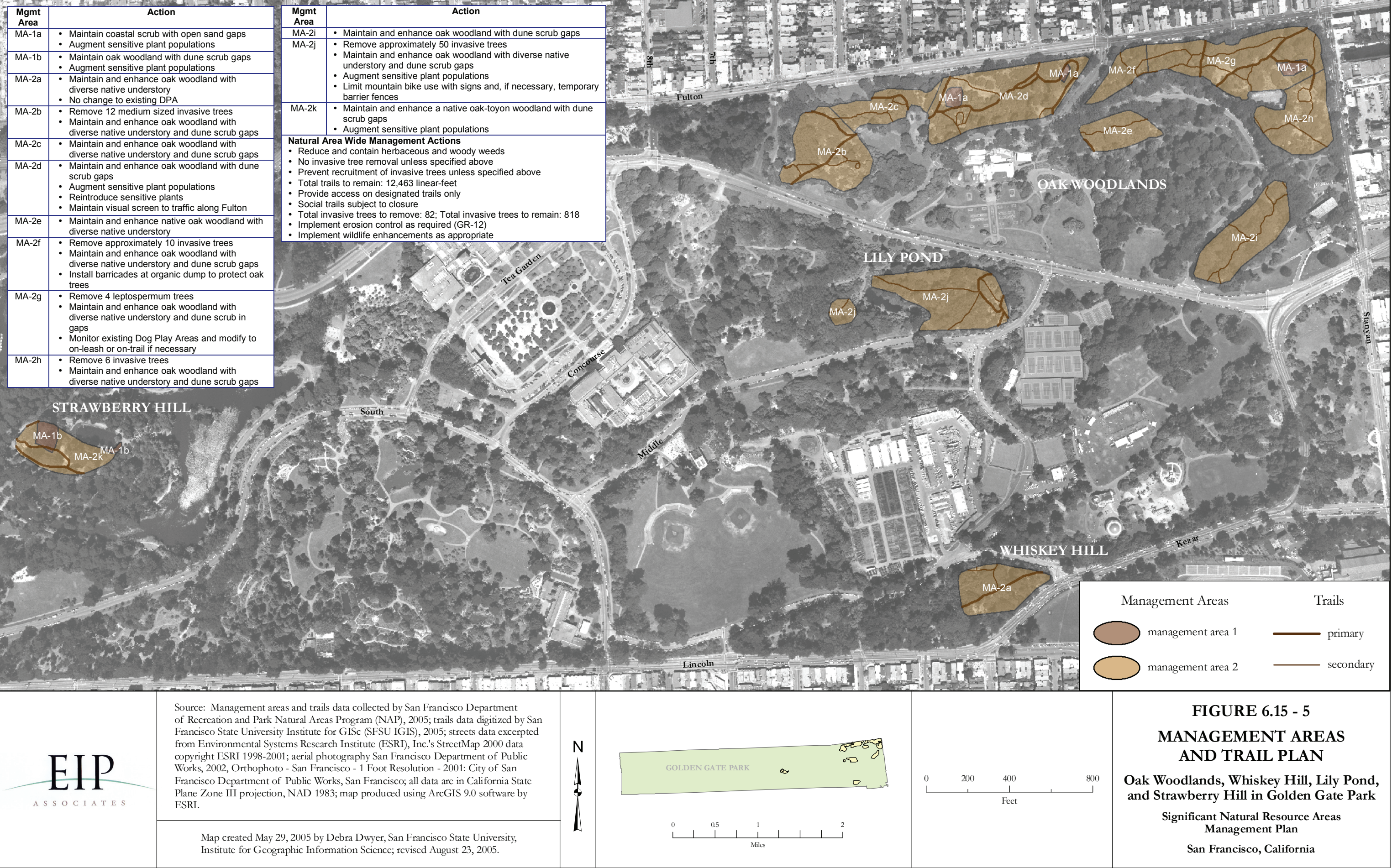
**Significant Natural Resource Areas**

**Management Plan**

**San Francisco, California**

**FINAL DRAFT**









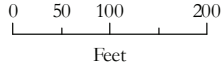




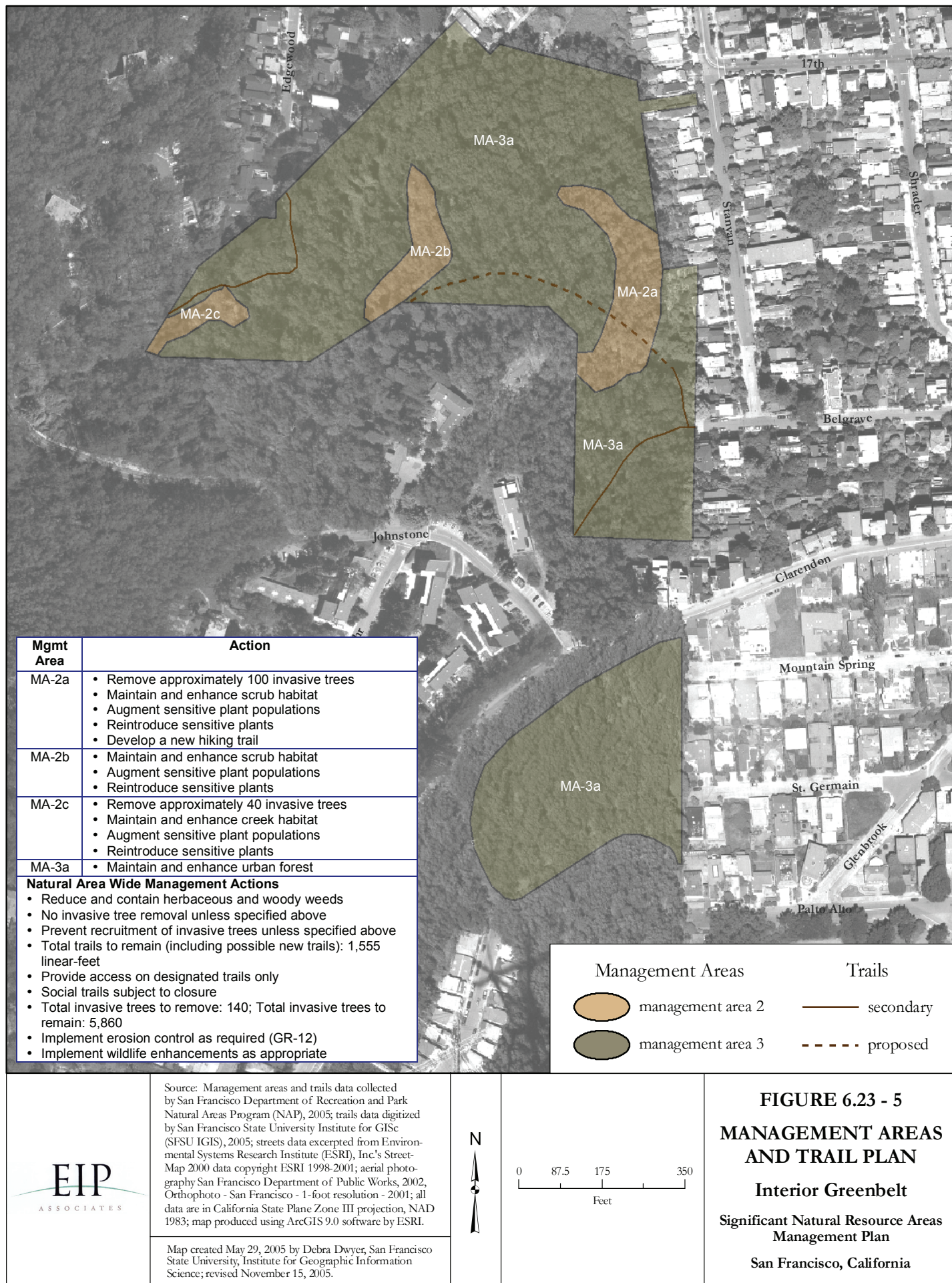


Mgmt Area	Action
MA-1a	<ul style="list-style-type: none"> <li>• Maintain salt marsh wetland</li> <li>• Augment sensitive plant populations</li> <li>• Discourage public access in wetland except on designated trails. Install fences if necessary</li> </ul>
MA-2a	<ul style="list-style-type: none"> <li>• Maintain and enhance a grassland-scrub wetland buffer</li> </ul>
MA-2b	<ul style="list-style-type: none"> <li>• Maintain and enhance a grassland-scrub mosaic with trees for shade and habitat</li> <li>• Beautify entrances by landscaping with showy habitat plants</li> </ul>
<b>Natural Area Wide Management Actions</b> <ul style="list-style-type: none"> <li>• Reduce and contain herbaceous and woody weeds</li> <li>• No invasive tree removal unless specified above</li> <li>• Prevent recruitment of invasive trees unless specified above</li> <li>• Total trails to remain: 1,885 linear-feet</li> <li>• Provide access on designated trails only</li> <li>• Social trails subject to closure</li> <li>• Total invasive trees to remove: 0; Total invasive trees to remain: 0</li> <li>• Implement erosion control as required (GR-12)</li> <li>• Implement wildlife enhancements as appropriate</li> </ul>	

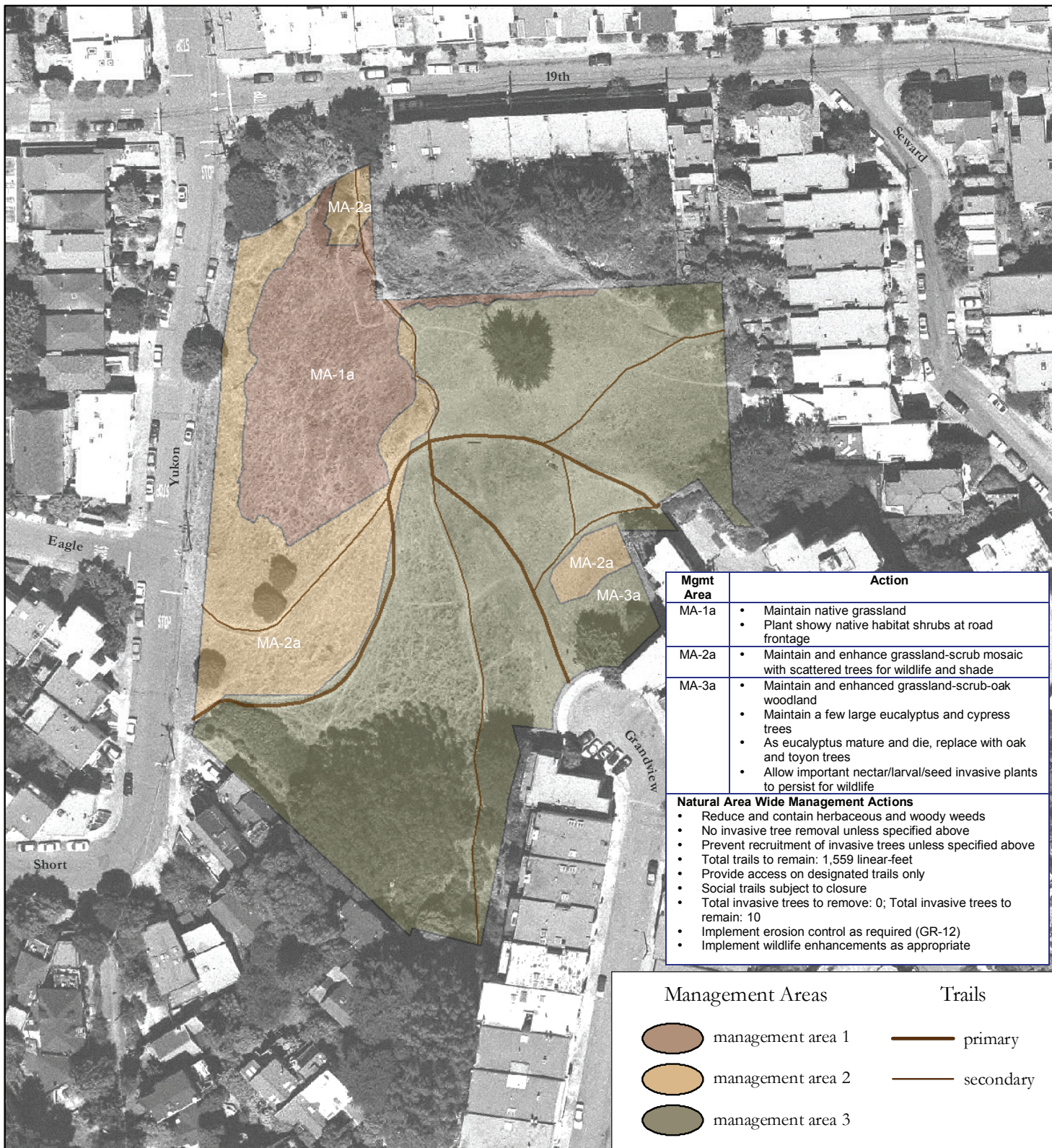
Management Areas	Trails
 management area 1	 primary
 management area 2	 secondary

	<p>Source: Management areas and trails data collected by San Francisco Department of Recreation and Park Natural Areas Program (NAP), 2005; trails data digitized by San Francisco State University Institute for GISc (SFSUGIS), 2005; streets data excerpted from Environmental Systems Research Institute (ESRI), Inc.'s Street-Map 2000 data copyright ESRI 1998-2001; aerial photography San Francisco Department of Public Works, 2002, Orthophoto - San Francisco - 1-foot resolution - 2001; all data are in California State Plane Zone III projection, NAD 1983; map produced using ArcGIS 9.0 software by ESRI.</p> <p>Map created May 29, 2005 by Debra Dwyer, San Francisco State University, Institute for Geographic Information Science, revised August 21, 2005.</p>			<p><b>FIGURE 6.18 - 5</b></p> <p><b>MANAGEMENT AREAS AND TRAIL PLAN</b></p> <p><b>India Basin Shoreline Park</b></p> <p><b>Significant Natural Resource Areas Management Plan</b></p> <p><b>San Francisco, California</b></p>









Source: Management areas and trails data collected by San Francisco Department of Recreation and Park Natural Areas Program (NAP), 2005; trails data digitized by San Francisco State University Institute for GISc (SFSU IGIS), 2005; streets data excerpted from Environmental Systems Research Institute (ESRI), Inc.'s Street-Map 2000 data copyright ESRI 1998-2001; aerial photography San Francisco Department of Public Works, 2002, Orthophoto - San Francisco - 1-foot resolution - 2001; all data are in California State Plane Zone III projection, NAD 1983; map produced using ArcGIS 9.0 software by ESRI.

Map created May 29, 2005 by Debra Dwyer, San Francisco State University, Institute for Geographic Information Science; revised August 23, 2005.



0 25 50 100  
Feet

## FIGURE 6.13 - 4 MANAGEMENT AREAS AND TRAIL PLAN

**Kite Hill**  
Significant Natural Resource Areas  
Management Plan  
San Francisco, California





Mgmt Area	Action
MA-1a	<ul style="list-style-type: none"><li>Maintain tule marsh wetland</li></ul>
MA-1b	<ul style="list-style-type: none"><li>Maintain trees for cormorant colony</li><li>Allow invasive tree recruitment for cormorant and heron nesting</li></ul>
MA-1c	<ul style="list-style-type: none"><li>Maintain dune scrub with open sand</li><li>Augment sensitive plant populations</li><li>Reintroduce sensitive plants</li><li>Relocate DPA, keep open and monitor in interim</li></ul>
MA-1d	<ul style="list-style-type: none"><li>Remove 3 small invasive trees</li><li>Maintain open dune scrub with open sand</li><li>Augment sensitive plant populations</li></ul>
MA-1e	<ul style="list-style-type: none"><li>Remove 6 invasive trees</li><li>Maintain dune scrub with open sand</li><li>Augment sensitive plant populations</li><li>Reintroduce sensitive plants</li></ul>
MA-1f	<ul style="list-style-type: none"><li>Maintain tule marsh wetland</li></ul>
MA-1g	<ul style="list-style-type: none"><li>Maintain sparse dune scrub with open sand</li><li>Augment sensitive plant populations</li><li>Reintroduce sensitive plants</li></ul>
MA-1h	<ul style="list-style-type: none"><li>Maintain willow scrub</li><li>Augment sensitive plant populations</li></ul>
MA-2a	<ul style="list-style-type: none"><li>Maintain and enhance western pond turtle habitat</li><li>Consider short-term restrictions during western pond turtle breeding</li></ul>
MA-2b	<ul style="list-style-type: none"><li>Remove approximately 10 invasive trees</li><li>Maintain and enhance oak woodland habitat</li><li>Maintain and enhance diverse coastal scrub with grassland and open dune gaps</li><li>Augment sensitive plant populations</li><li>Reintroduce sensitive plants</li><li>Relocate DPA, keep open and monitor in interim</li></ul>
MA-2c	<ul style="list-style-type: none"><li>Remove approximately 10 invasive trees on steep slopes</li><li>Maintain and enhance a mixed forest (cypress, oak, toyon) and native scrub</li><li>Allow for cypress recruitment</li><li>Augment sensitive plant populations</li><li>Reintroduce sensitive plants</li><li>Consider development of an lake overlook</li></ul>

Source: Management areas and trails data collected by San Francisco Department of Recreation and Park Natural Areas Program (NAP), 2005; trails data digitized by San Francisco State University Institute for GISc (SFSU IGIS), 2005; streets data excerpted from Environmental Systems Research Institute (ESRI), Inc.'s StreetMap 2000 data copyright ESRI 1998-2001; aerial photography San Francisco Department of Public Works, 2002, Orthophoto - San Francisco - 1-foot resolution - 2001; all data are in California State Plane Zone III projection, NAD 1983; map produced using ArcGIS 9.0 software by ESRI.

Map created May 30, 2005 by Debra Dwyer, San Francisco State University, Institute for Geographic Information Science; revised October 13, 2005.

FIGURE 6.1 - 9

MANAGEMENT AREAS AND TRAIL PLAN

Lake Merced

Significant Natural Resource Areas Management Plan

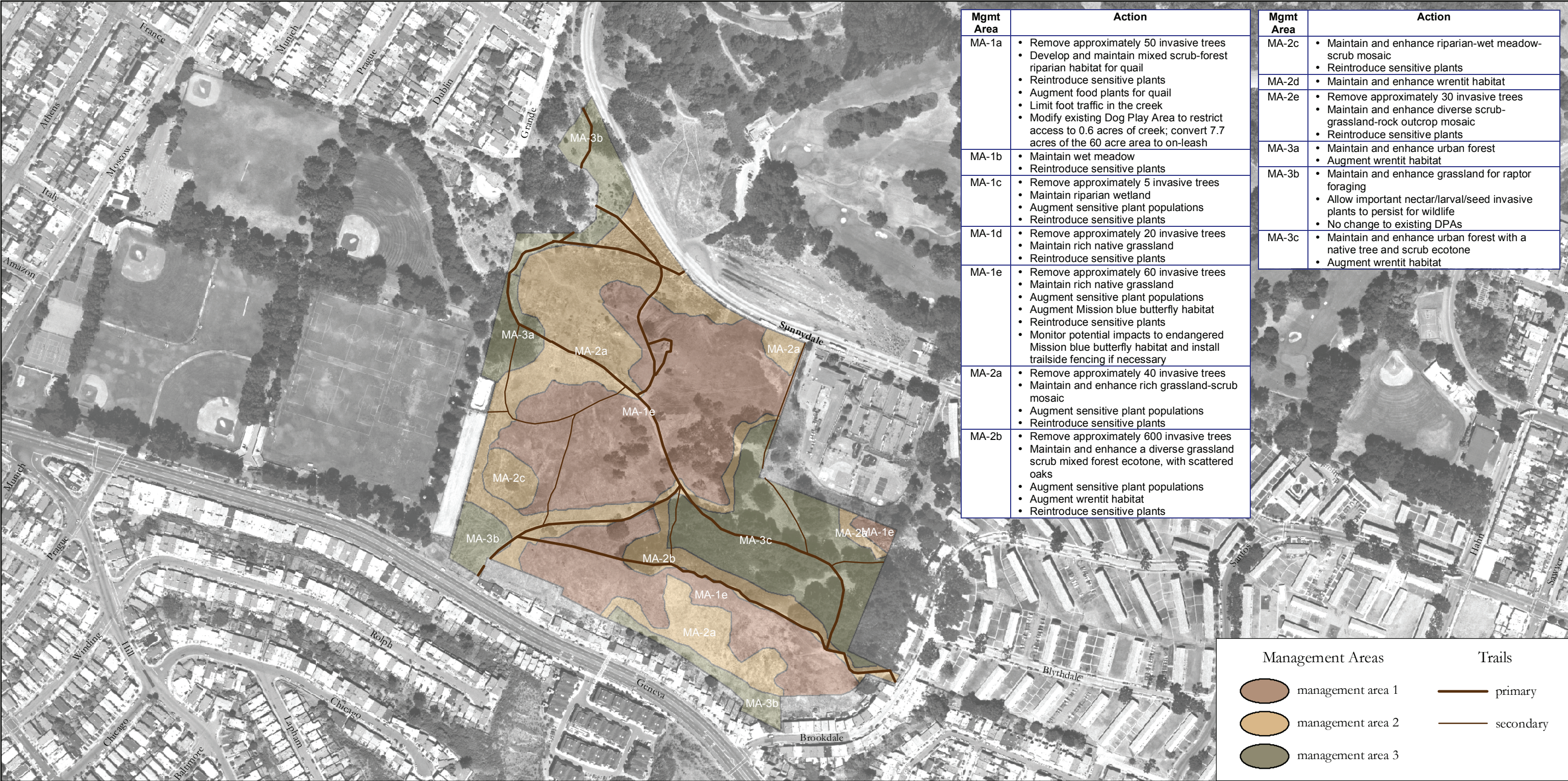
San Francisco, California

02505001,000

Feet

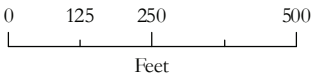
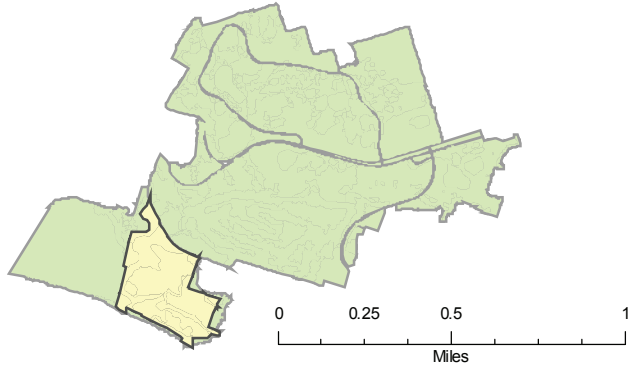
N





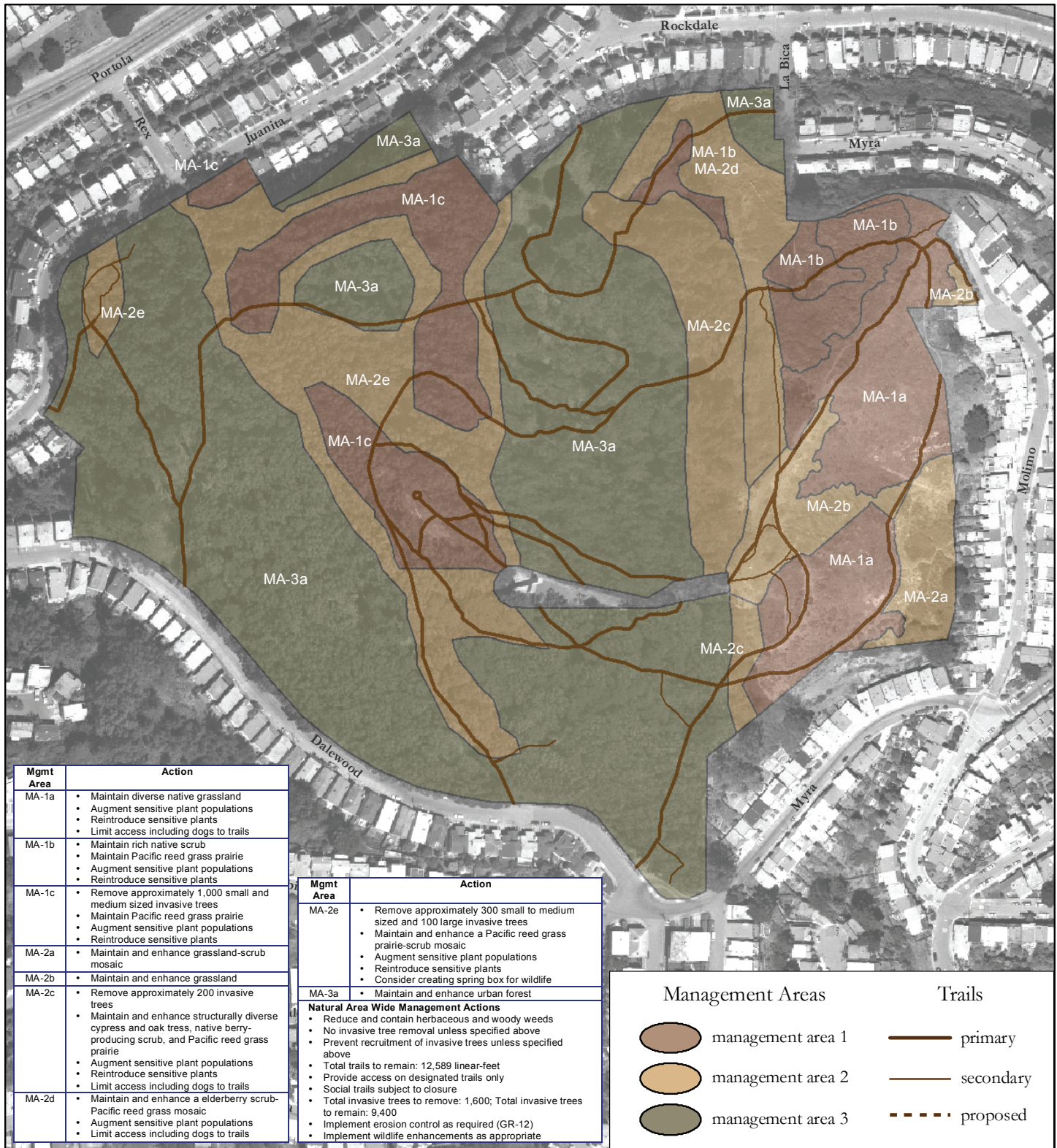
Source: Management areas and trails data collected by San Francisco Department of Recreation and Park Natural Areas Program (NAP), 2005; trails data digitized by San Francisco State University Institute for GISc (SFSU IGIS), 2005; streets data excerpted from Environmental Systems Research Institute (ESRI), Inc.'s StreetMap 2000 data copyright ESRI 1998-2001; aerial photography San Francisco Department of Public Works, 2002, Orthophoto - San Francisco - 1 Foot Resolution - 2001: City of San Francisco Department of Public Works, San Francisco; all data are in California State Plane Zone III projection, NAD 1983; map produced using ArcGIS 9.0 software by ESRI.

Map created May 29, 2005 by Debra Dwyer, San Francisco State University, Institute for Geographic Information Science; revised August 23, 2005.



**FIGURE 6.19 - 13**  
**MANAGEMENT AREAS**  
**AND TRAIL PLAN**  
**McLaren Park**  
**Significant Natural Resource Areas**  
**Management Plan**  
**San Francisco, California**





Source: Management areas and trails data collected by San Francisco Department of Recreation and Park Natural Areas Program (NAP), 2005; trails data digitized by San Francisco State University Institute for GIS (SFSUGIS), 2005; streets data excerpted from Environmental Systems Research Institute (ESRI), Inc.'s Street-Map 2000 data copyright ESRI 1998-2001; aerial photography San Francisco Department of Public Works, 2002, Orthophoto - San Francisco - 1-foot resolution - 2001; all data are in California State Plane Zone III projection, NAD 1983; map produced using ArcGIS 9.0 software by ESRI.

Map created May 29, 2005 by Debra Dwyer, San Francisco State University, Institute for Geographic Information Science (SFSU IGIS); revised August 22, 2005.



0 75 150 300  
Feet

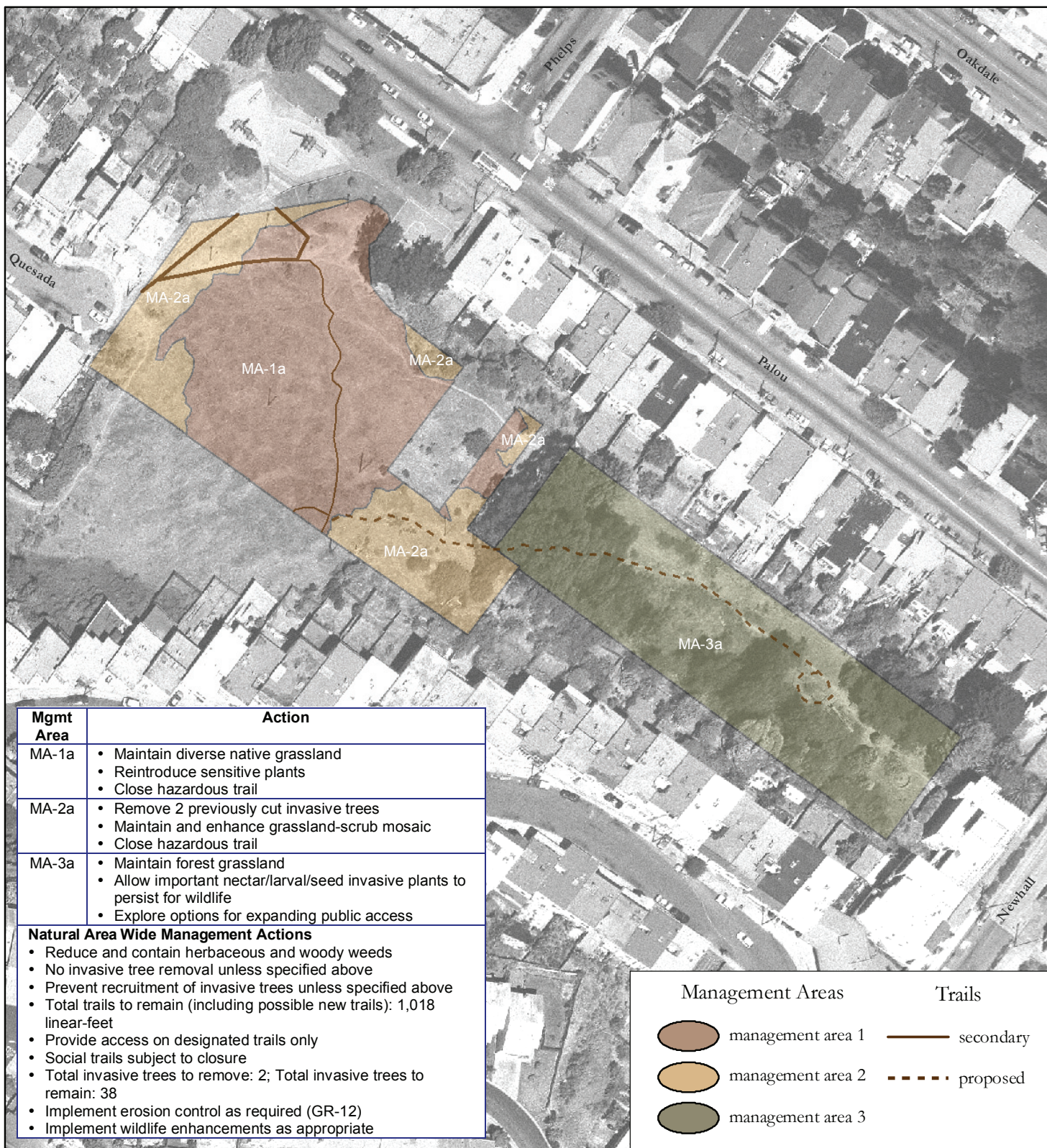
## FIGURE 6.2 - 5 MANAGEMENT AREAS AND TRAIL PLAN

### Mt. Davidson

#### Significant Natural Resource Areas Management Plan

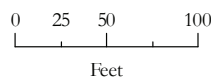
San Francisco, California





Source: Management areas and trails data collected by San Francisco Department of Recreation and Park Natural Areas Program (NAP), 2005; trails data digitized by San Francisco State University Institute for GISc (SFSU IGIS), 2005; streets data excerpted from Environmental Systems Research Institute (ESRI), Inc.'s Street-Map 2000 data copyright ESRI 1998-2001; aerial photography San Francisco Department of Public Works, 2002, Orthophoto - San Francisco - 1-foot resolution - 2001; all data are in California State Plane Zone III projection, NAD 1983; map produced using ArcGIS 9.0 software by ESRI.

Map created May 29, 2005 by Debra Dwyer, San Francisco State University, Institute for Geographic Information Science; revised August 23, 2005.



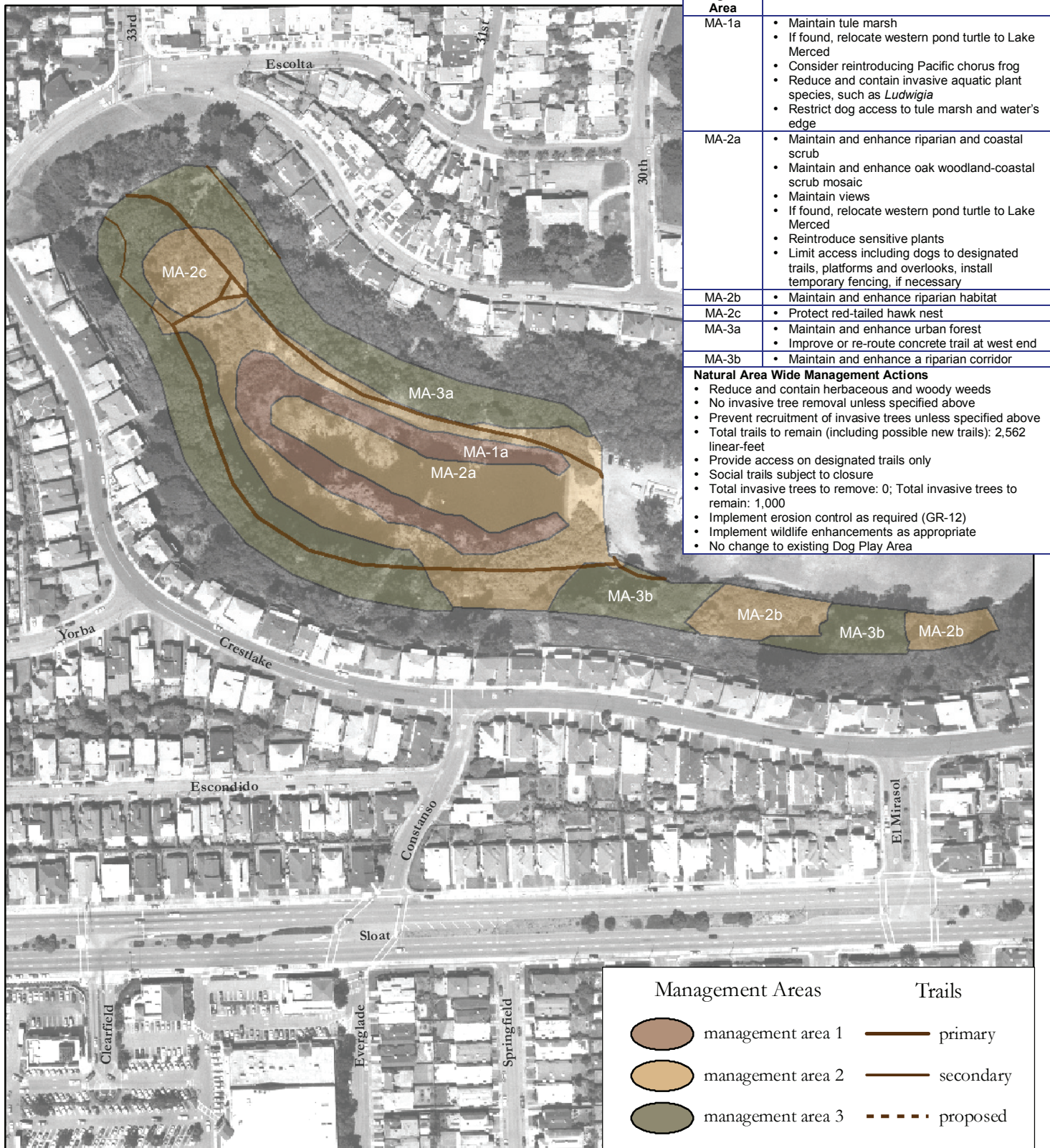
## FIGURE 6.20 - 4 MANAGEMENT AREAS AND TRAIL PLAN

Palou Phelps

Significant Natural Resource Areas  
Management Plan

San Francisco, California





Source: Management areas and trails data collected by San Francisco Department of Recreation and Park Natural Areas Program (NAP), 2005; trails data digitized by San Francisco State University Institute for GISc (SFSU IGIS), 2005; streets data excerpted from Environmental Systems Research Institute (ESRI), Inc.'s Street-Map 2000 data copyright ESRI 1998-2001; aerial photography San Francisco Department of Public Works, 2002, Orthophoto - San Francisco - 1-foot resolution - 2001; all data are in California State Plane Zone III projection, NAD 1983; map produced using ArcGIS 9.0 software by ESRI.

Map created May 29, 2005 by Debra Dwyer, San Francisco State University, Institute for Geographic Information Science; revised August 23, 2005.



0 50 100 200  
Feet

## FIGURE 6.7 - 5 MANAGEMENT AREAS AND TRAIL PLAN

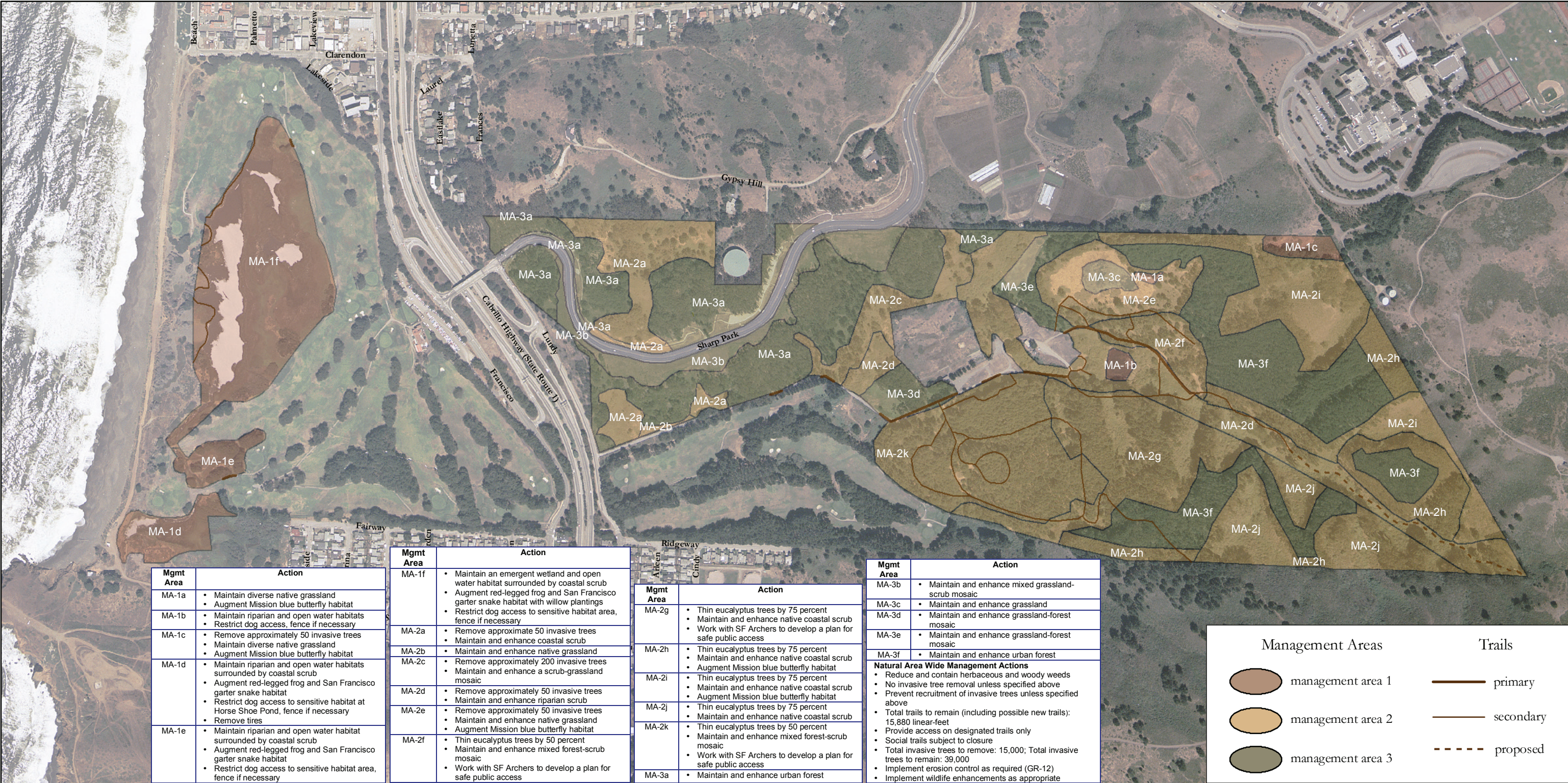
**Pine Lake**

**Significant Natural Resource Areas  
Management Plan**

**San Francisco, California**

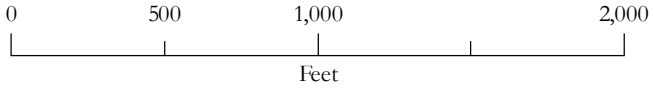






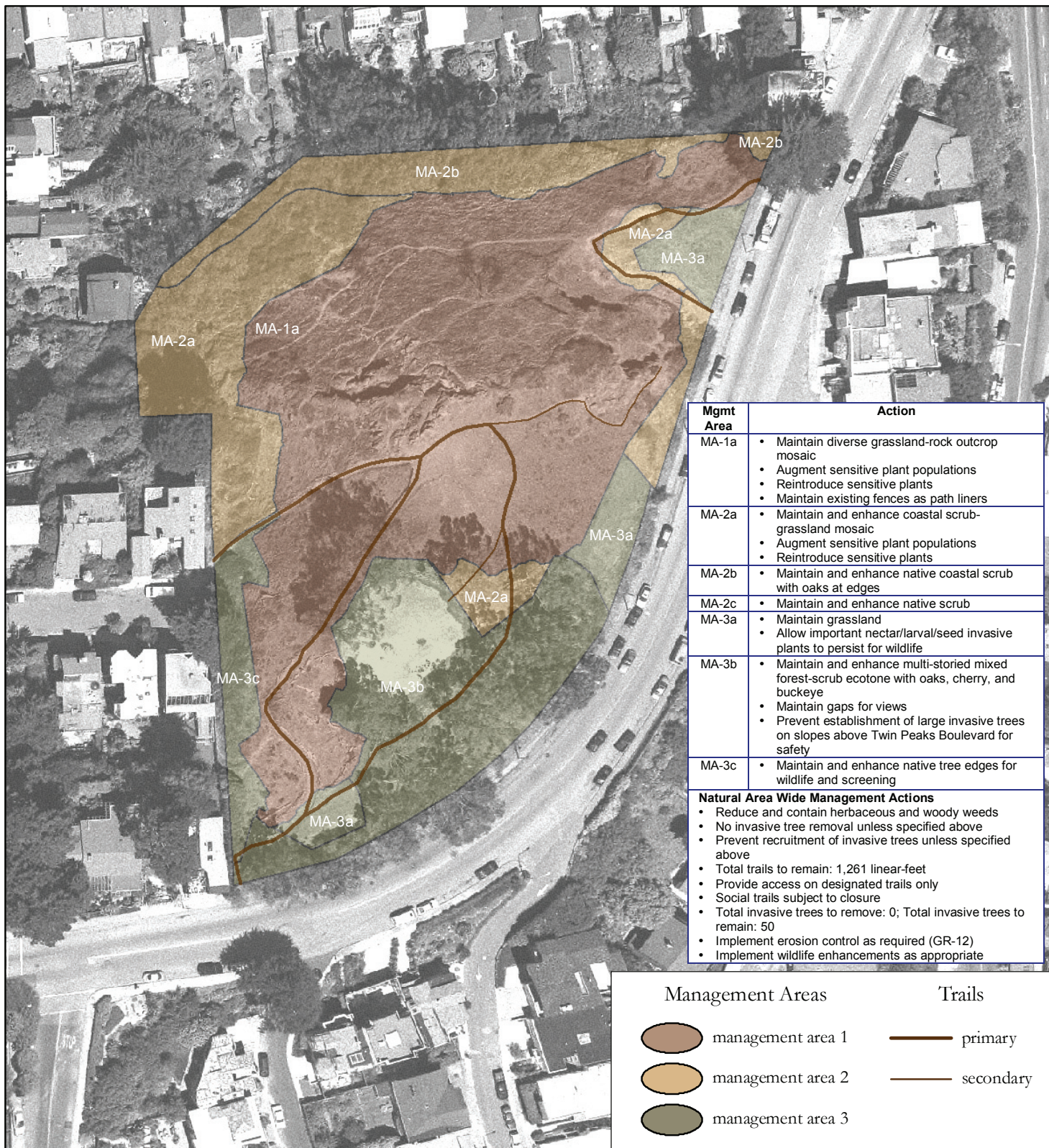
Source: Management areas and trails data collected by San Francisco Department of Recreation and Park Natural Areas Program (NAP), 2005; trails data digitized by San Francisco State University Institute for GISc (SFSU IGIS), 2005; streets data excerpted from Environmental Systems Research Institute (ESRI), Inc.'s StreetMap 2000 data copyright ESRI 1998-2001; aerial photography from HJW for NAP, 1995, 2-foot pixels; all data are in California State Plane Zone III projection, NAD 1983; map produced using ArcGIS 9.0 software by ESRI.

Map created May 28, 2005 by Debra Dwyer, San Francisco State University, Institute for Geographic Information Science; revised August 24, 2005.



**FIGURE 6.4-5**  
**MANAGEMENT AREAS**  
**AND TRAIL PLAN**  
**Sharp Park**  
**Significant Natural Resource Areas**  
**Management Plan**  
**San Francisco, California**





Source: Management areas and trails data collected by San Francisco Department of Recreation and Park Natural Areas Program (NAP), 2005; trails data digitized by San Francisco State University Institute for GISc (SFSU IGIS), 2005; streets data excerpted from Environmental Systems Research Institute (ESRI), Inc.'s Street-Map 2000 data copyright ESRI 1998-2001; aerial photography San Francisco Department of Public Works, 2002, Orthophoto - San Francisco - 1-foot resolution - 2001; all data are in California State Plane Zone III projection, NAD 1983; map produced using ArcGIS 9.0 software by ESRI.

Map created May 29, 2005 by Debra Dwyer, San Francisco State University, Institute for Geographic Information Science; revised August 23, 2005.



0 25 50 100  
Feet

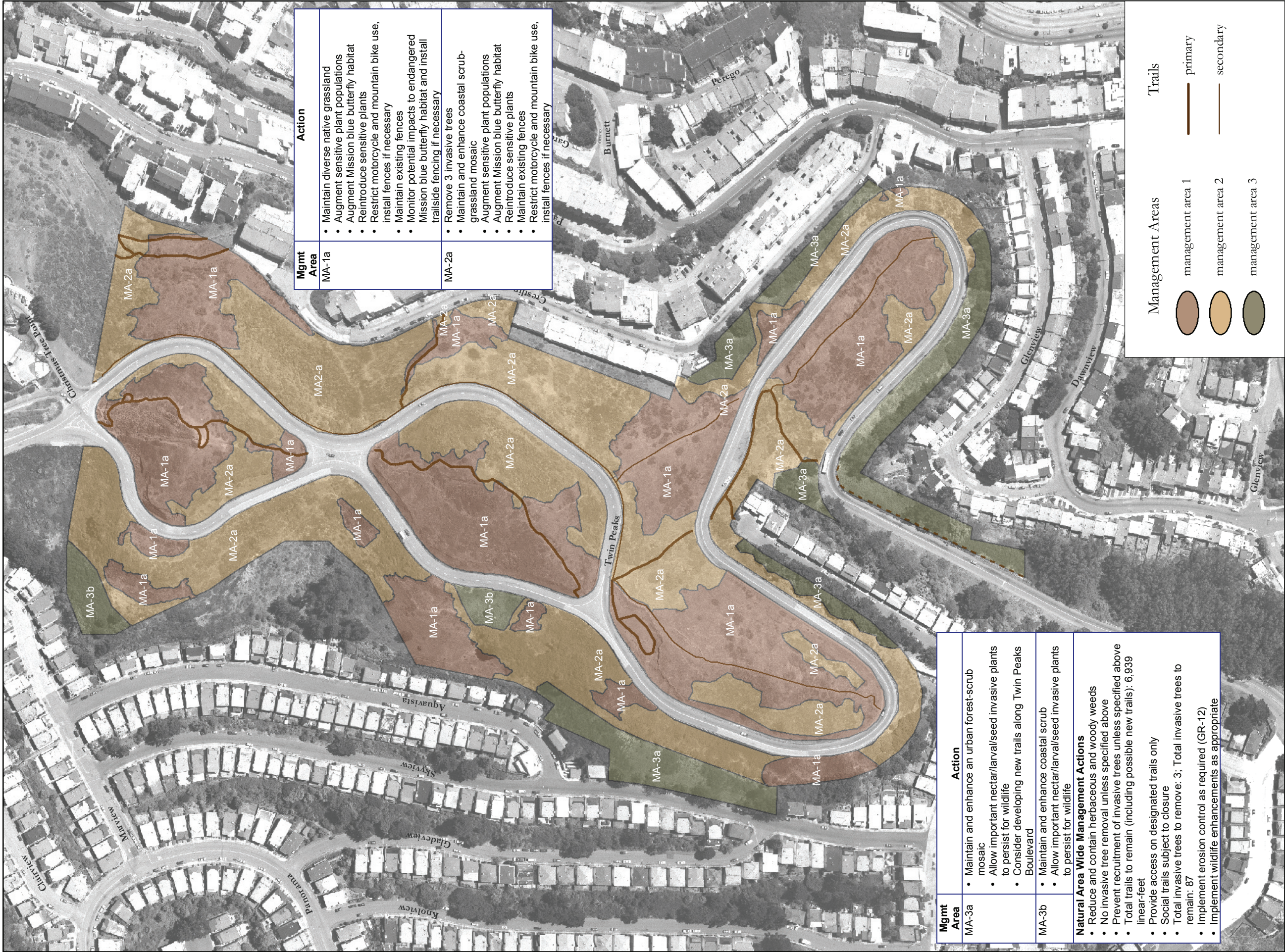
## FIGURE 6.14 - 5 MANAGEMENT AREAS AND TRAIL PLAN

### Tank Hill

Significant Natural Resource Areas  
Management Plan

San Francisco, California





Source: Management areas and trails data collected by San Francisco Department of Recreation and Park Natural Areas Program (NAP), 2005; trails data digitized by San Francisco State University Institute for GISc (SFSU IGIS), 2005; streets data excerpted from Environmental Systems Research Institute (ESRI), Inc.'s StreetMap 2000 data copyright ESRI 1998-2001; aerial photography San Francisco Department of Public Works, 2002; Orthophoto - San Francisco - 1-foot resolution - 2001; all data are in California State Plane Zone III projection, NAD 1983; map produced using ArcGIS 9.0 software by ESRI.

Map created May 29, 2005 by Debra Dwyer, San Francisco State University, Institute for Geographic Information Science; revised October 11, 2005.



**FIGURE 6.8 - 5**

**MANAGEMENT AREAS AND TRAIL PLAN**

**Twin Peaks**

Significant Natural Resource Areas  
Management Plan  
San Francisco, California





Source: Management areas and trails data collected by San Francisco Department of Recreation and Park Natural Areas Program (NAP), 2005; trails data digitized by San Francisco State University Institute for GISc (SFSU IGIS), 2005; streets data excerpted from Environmental Systems Research Institute (ESRI), Inc.'s Street-Map 2000 data copyright ESRI 1998-2001; aerial photography San Francisco Department of Public Works, 2002, Orthophoto - San Francisco - 1-foot resolution - 2001; all data are in California State Plane Zone III projection, NAD 1983; map produced using ArcGIS 9.0 software by ESRI.

Map created May 28, 2005 by Debra Dwyer, San Francisco State University, Institute for Geographic Information Science; revised August 23, 2005.



0 15 30 60  
Feet

## FIGURE 6.16 - 4 MANAGEMENT AREAS AND TRAIL PLAN

### 15th Avenue Steps

Significant Natural Resource Areas  
Management Plan

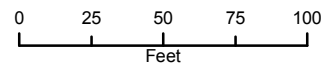
San Francisco, California





Source: Orthophoto - SFDT, 2007; Street Data - SFDPW, 2009;  
Significant Natural Area Data created by RPD Planning from  
information provided by RPD Natural Area Program, 2010;  
All Data are NAD 1983 StatePlane California III FIPS 0403 Feet

Created by Sean Stasio, SFRPD Planning Division  
for SFRPD Significant Natural Areas Program, NOVEMBER 2010



**FIGURE 6.27-4**  
**MANAGEMENT AREAS**

**Everson/Digby**

Significant Natural Resource Areas  
Management Plan

San Francisco, California